

 **BOEING**
COMPONENT
MAINTENANCE MANUAL

TO: ALL HOLDERS OF WING AND ENGINE ANTI-ICE CONTROL PANEL ASSEMBLY M10397
COMPONENT MAINTENANCE MANUAL 30-11-52

REVISION NO. 17 DATED JUL 01/03

HIGHLIGHTS

Pages which have been added or revised are outlined below together with the highlights of the revision. Remove and insert the affected pages as listed and enter Revision No. and date on the Record of Revision Sheet.

CHAPTER/SECTION

AND PAGE NO.

DESCRIPTION OF CHANGE

TITLE PAGE

Added a coverage of assemblies P/N 233T3241-1306 thru -1317, -1323 thru -1334 per CSB 233T3241-30-03 R1.

1

TR & SB RECORD

1

101-109,111-114

REPAIR-GEN

601

1004-1033,1039-1043,

1061,1075-10800,

1080Q-1082D

TITLE PAGE

Added a coverage of assemblies P/N 233T3100-65, -91, -135, -136, -160, -178, -179, -180, -248 thru -250, -292.

1

101-109,111-114

REPAIR-GEN

601

1004-1033,1039-1043,

1061,1075-10800,

1080Q-1082D

TR & SB RECORD

Incorporated TR 30-6 (767) and TR 30-7 (757).

1

101

Changed the test equipment specification to allow the use of any Simpson 260 series multimeter.

30-11-52

HIGHLIGHTS

01.1

Page 1

Jul 01/03

WING AND ENGINE ANTI-ICE CONTROL PANEL
ASSEMBLY, M10397

PART NUMBERS 233T3241-1,-5,-8,-10 THRU -15,-17,
-20,-41 THRU -50,-1001,
-1005,-1008,-1010 THRU
-1015,-1017,-1020,
-1041 THRU -1050,
-1306 THRU -1317,
-1323 THRU -1334,
233T3100-65,-91,-135,-136,-160,
-178,-179,-180,-248 THRU
-250,-292

COMPONENT MAINTENANCE MANUAL
WITH
ILLUSTRATED PARTS LIST

30-11-52

TITLE PAGE

Page 1

Jul 01/03

01.1



REVISION RECORD

- Retain this record in front of manual. On receipt of revision, insert revised pages in the manual, and enter revision number, date inserted and initial.

REVISION NUMBER	REVISION DATE	DATE FILED	BY	REVISION NUMBER	REVISION DATE	DATE FILED	BY

30-11-52

REVISION RECORD

01.1

Page 1

Jul 01/88

TEMPORARY REVISION AND SERVICE BULLETIN RECORD

BOEING SERVICE BULLETIN	BOEING TEMPORARY REVISION	OTHER DIRECTIVE	DATE OF INCORPORATION INTO MANUAL
233T3241-30-01 233T3241-30-02 233T3241-30-02R1 233T3241-30-03	30-3	PRR C12010 PRR C12011 MC B1300-001 PRR N53112 PRR C12526 PRR 53135-97 PRR B11632 PRR B11718 PRR 53735-5,-18 PRR 53735-5,-18 PRR 54530-241S PRR B12901-10S	OCT 10/82 OCT 10/82 OCT 10/82 JAN 10/85 OCT 10/85 OCT 01/87 JAN 01/88 JAN 01/90 APR 01/90 JAN 01/91 NOV 01/01 NOV 01/01
233T3241-30-03R1	30-4 (757/767) 30-6 (767) 30-7 (757)		NOV 01/01 JUL 01/03 JUL 01/03 JUL 01/03

30-11-52

TR & SB RECORD

01.1

Page 1

Jul 01/03

PAGE	DATE	CODE	PAGE	DATE	CODE
30-11-52			TESTING & TROUBLE SHOOTING		CONT.
TITLE PAGE			*112	JUL 01/03	01.1
*1	JUL 01/03	01.1	*113	JUL 01/03	01.1
2	BLANK		*114	JUL 01/03	01.1
REVISION RECORD			REPAIR-GENERAL		
1	JUL 01/88	01.1	*601	JUL 01/03	01.1
2	BLANK		602	BLANK	
TR & SB RECORD			ILLUSTRATED PARTS LIST		
*1	JUL 01/03	01.1	1001	JUL 01/88	01.1
2	BLANK		1002	NOV 01/01	01.1
LIST OF EFFECTIVE PAGES			1003	NOV 01/01	01.1
*1	JUL 01/03	01	*1004	JUL 01/03	01.1
THRU LAST PAGE			*1005	JUL 01/03	01.1
CONTENTS			*1006	JUL 01/03	01.1
1	JUL 01/88	01.1	*1007	JUL 01/03	01.1
2	BLANK		*1008	JUL 01/03	01.1
INTRODUCTION			*1009	JUL 01/03	01.1
1	JUL 01/89	01.1	*1010	JUL 01/03	01.1
2	BLANK		*1011	JUL 01/03	01.1
DESCRIPTION & OPERATION			*1012	JUL 01/03	01.1
1	JUL 01/88	01.1	*1013	JUL 01/03	01.1
2	BLANK		*1014	JUL 01/03	01.1
TESTING & TROUBLE SHOOTING			*1015	JUL 01/03	01.1
*101	JUL 01/03	01.1	*1016	JUL 01/03	01.1
*102	JUL 01/03	01.1	*1017	JUL 01/03	01.1
*103	JUL 01/03	01.1	*1018	JUL 01/03	01.1
*104	JUL 01/03	01.1	*1019	JUL 01/03	01.1
*105	JUL 01/03	01.1	*1020	JUL 01/03	01.1
*106	JUL 01/03	01.1	*1021	JUL 01/03	01.1
*107	JUL 01/03	01.1	*1022	JUL 01/03	01.1
*108	JUL 01/03	01.1	*1023	JUL 01/03	01.1
*109	JUL 01/03	01.1	*1024	JUL 01/03	01.1
*110	JUL 01/03	01.101	*1025	JUL 01/03	01.1
*111	JUL 01/03	01.1	*1026	JUL 01/03	01.1
			*1027	JUL 01/03	01.1
			*1028	JUL 01/03	01.1
			*1029	JUL 01/03	01.1
			*1030	JUL 01/03	01.1
			*1031	JUL 01/03	01.1
			*1032	JUL 01/03	01.1
			*1033	JUL 01/03	01.1

* = REVISED, ADDED OR DELETED

30-11-52

EFFECTIVE PAGES
CONTINUED Page 1
01 Jul 01/03

PAGE	DATE	CODE	PAGE	DATE	CODE
ILLUSTRATED PARTS LIST		CONT.	ILLUSTRATED PARTS LIST		CONT.
*1034	JUL 01/03	01.101	*1076	JUL 01/03	01.1
*1035	JUL 01/03	01.101	*1077	JUL 01/03	01.1
*1036	JUL 01/03	01.101	*1078	JUL 01/03	01.1
*1037	JUL 01/03	01.101	*1079	JUL 01/03	01.1
*1038	JUL 01/03	01.101	*1080	JUL 01/03	01.1
*1039	JUL 01/03	01.1	*1080A	JUL 01/03	01.1
*1040	JUL 01/03	01.1	*1080B	JUL 01/03	01.1
*1041	JUL 01/03	01.1	*1080C	JUL 01/03	01.1
*1042	JUL 01/03	01.1	*1080D	JUL 01/03	01.1
*1043	JUL 01/03	01.1	*1080E	JUL 01/03	01.1
*1044	JUL 01/03	01.101	*1080F	JUL 01/03	01.1
*1045	JUL 01/03	01.101	*1080G	JUL 01/03	01.1
*1046	JUL 01/03	01.101	*1080H	JUL 01/03	01.1
*1047	JUL 01/03	01.101	*1080I	JUL 01/03	01.1
*1048	JUL 01/03	01.101	*1080J	JUL 01/03	01.1
*1049	JUL 01/03	01.101	*1080K	JUL 01/03	01.1
*1050	JUL 01/03	01.101	*1080L	JUL 01/03	01.1
*1051	JUL 01/03	01.101	*1080M	JUL 01/03	01.1
*1052	JUL 01/03	01.101	*1080N	JUL 01/03	01.1
*1053	JUL 01/03	01.101	*1080O	JUL 01/03	01.1
*1054	JUL 01/03	01.101	*1080P	BLANK	
*1055	JUL 01/03	01.101	*1080Q	JUL 01/03	01.1
*1056	JUL 01/03	01.101	*1080R	JUL 01/03	01.1
*1057	JUL 01/03	01.101	*1080S	JUL 01/03	01.1
*1058	JUL 01/03	01.101	*1080T	JUL 01/03	01.1
*1059	JUL 01/03	01.101	*1080U	JUL 01/03	01.1
*1060	JUL 01/03	01.101	*1080V	JUL 01/03	01.1
*1061	JUL 01/03	01.1	*1080W	JUL 01/03	01.1
*1062	JUL 01/03	01.101	*1080X	JUL 01/03	01.1
*1063	JUL 01/03	01.101	*1080Y	JUL 01/03	01.1
*1064	JUL 01/03	01.101	*1080Z	JUL 01/03	01.1
*1065	JUL 01/03	01.101	*1081	JUL 01/03	01.1
*1066	JUL 01/03	01.101	*1082	JUL 01/03	01.1
*1067	JUL 01/03	01.101	*1082A	JUL 01/03	01.1
*1068	JUL 01/03	01.101	*1082B	JUL 01/03	01.1
*1069	JUL 01/03	01.101	*1082C	JUL 01/03	01.1
*1070	JUL 01/03	01.101	*1082D	JUL 01/03	01.1
*1071	JUL 01/03	01.101			
*1072	JUL 01/03	01.101			
*1073	JUL 01/03	01.101			
*1074	BLANK				
*1075	JUL 01/03	01.1			

* = REVISED, ADDED OR DELETED

30-11-52

EFFECTIVE PAGES
 LAST PAGE Page 2
 01 Jul 01/03



TABLE OF CONTENTS

<u>Paragraph Title</u>	<u>Page</u>
Description and Operation	1
Testing and Trouble Shooting.	101
Disassembly*[1]
Cleaning.*[1]
Check*[1]
Repair.	601
Assembly.*[1]
Fits and Clearances (not applicable)	
Special Tools, Fixtures, and Equipment.*[2]
Illustrated Parts List.	1001

*[1] Use applicable procedures in 20-11-05 and standard industry practices.

*[2] Special instructions not required.

30-11-52

CONTENTS

01.1

Page 1

Jul 01/88

INTRODUCTION

The instructions in this manual provide the information necessary to perform maintenance functions including test, fault isolation, and replacement of defective components.

This manual is divided into separate sections:

- | | |
|---|--------------------------------|
| 1. Title Page | 4. List of Effective Pages |
| 2. Record of Revisions | 5. Table of Contents |
| 3. Temporary Revisions &
Service Bulletin Record | 6. Introduction |
| | 7. Procedures and IPL Sections |

Refer to the Table of Contents for the page location of applicable sections.

An explanation of the use of the Illustrated Parts List is provided in the introduction of that section.

All weights and measurements used in the manual are in English units unless otherwise stated. When metric equivalents are given, they will be in parentheses following the English units.

Design changes, optional parts, configuration differences and Service Bulletin modifications create alternate part numbers. These are identified in the Illustrated Parts List (IPL) by adding an alphabetical character to the basic item number. The resulting item number is called an alpha-variant. Throughout the manual, IPL basic item number references also apply to alpha-variants unless otherwise indicated.

Verification:

Testing/TS Nov 11/82

30-11-52

INTRODUCTION

01.1

Page 1

Jul 01/89

WING AND ENGINE ANTI-ICE PANEL ASSEMBLY M10397

DESCRIPTION AND OPERATION

1. Description

- A. The wing and engine anti-ice panel assembly consists of a baseplate assembly and connectors. The baseplate assembly includes pushbutton indicator switches and annunciator lights. The connectors are mounted on a bracket which is attached to the baseplate assembly by standoffs. A wire bundle assembly interconnects the switches and lights with the connectors.

30-11-52

DESCRIPTION & OPERATION

01.1

Page 1

Jul 01/88

TESTING AND TROUBLE SHOOTING

1. Test Equipment

A. Multimeter: Any model in the Simpson 260 series of multimeters/VOMs or equivalent.

B. Power supply: - 0-30v dc variable, 0.5 amp
- 5.0 ±0.03v ac

C. Test connectors:

(1) For 233T3241-1, -5, -10, -11, -13, -14, -17, -20, and -41 thru -47, -1001, -1005, -1010, -1011, -1013, -1014, -1017, -1020, -1041 thru -1047, -1306 thru -1309, -1311, -1312, -1314, -1315, -1317, -1323 thru -1331 and 233T3100-65, -91, -135, -136, -178, -179, -248, -249, -292, use BACC45FT12-12S8, BACC45FT14-15S, and BACC45FT14-15S7. Boeing breakout box A33003-2 with cables A33003-11, -18, and -20 may be used.

(2) For 233T3241-8, -12, -15, and -48 thru -50, -1008, -1012, -1015, -1048 thru -1050, -1310, -1313, -1316, -1332 thru -1334 and 233T3100-160, -180, -250, use BACC45FT12-12S8, BACC45FT14-15S, and BACC45FT16-24S8. Boeing breakout box A33003-2 with cables A33003-11, -18, and -31 may be used.

2. Functional Test

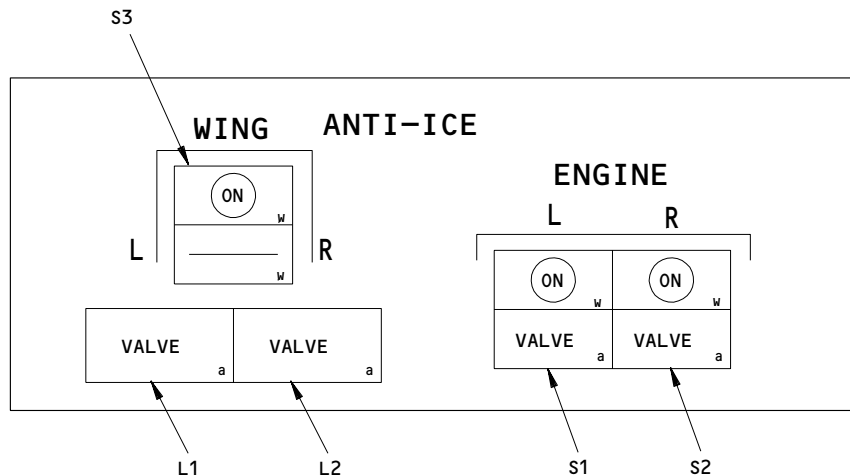
A. Connect test connector BACC45FT12-12S8 to J1, BACC45FT14-15S to J2, and for 233T3241-1, -5, -10, -11, -13, -14, -17, -20, and -41 thru -47, -1001, -1005, -1010, -1011, -1013, -1014, -1017, -1020, -1041 thru -1047, -1306 thru -1309, -1311, -1312, -1314, -1315, -1317, -1323 thru -1331 and 233T3100-65, -91, -135, -136, -178, -179, -248, -249, -292. Connect BACC45FT14-15S7 to J3 or for 233T3241-8, -12, 15, and -48 thru -50, -1008, -1012, -1015, -1048 thru -1050, -1310, -1313, -1316, -1332 thru -1334 and 233T3100-160, -180, -250 connect BACC45FT16-24S8 to J3.

B. Perform the test steps listed in Fig. 102. Component locations are shown in Fig. 101.

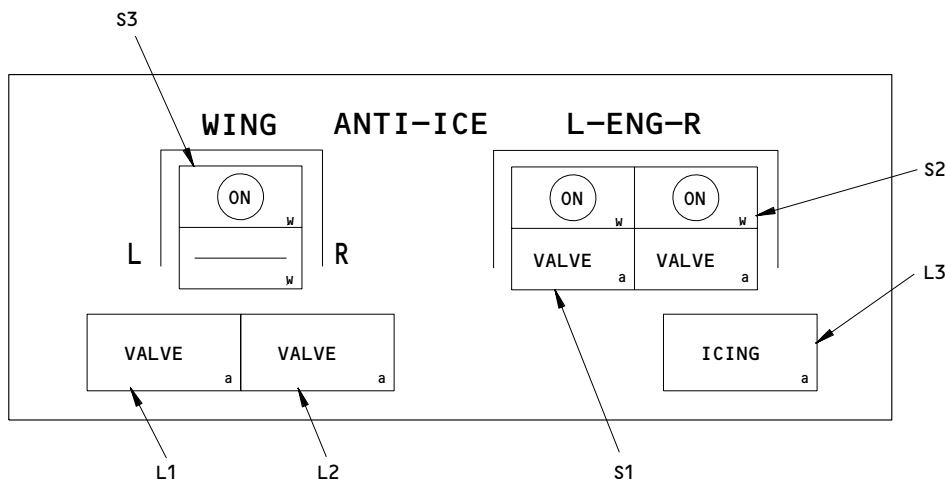
NOTE: Alternate action switches S1, S2 and S3 are "on" when their respective pushbuttons are pushed and the pushbuttons latch down. They are "off" when their pushbuttons are pushed and the pushbuttons relax back to the up position.

C. (For 233T3241-41 thru -50, -1041 thru -1050, -1323 thru -1334 and 233T3100-65, -91, -135, -136, -160, -178 thru -180, -248 thru -250, -292 MADE WITH 233T3241-41, -45, -41, -45, -48, -42, -46, -49, -43, -47, -50, -44, RESPECTIVELY) Perform relay test per Fig. 102A.

30-11-52



233T3241-1,-8,-10,-12,-13,-15,-17,-20,-41 THRU -44,-48 THRU -50,
 -1001,-1008,-1010,-1012,-1013,-1015,-1017,-1020,-1041 THRU
 -1044,-1048 THRU -1050,-1306,-1307,-1310,-1311,-1313,-1314,
 -1316,-1317,-1323 THRU -1327,-1332 THRU -1334
 233T3100-65,-135,-160,-178,-180,-248,-250,-292



233T3241-5,-11,-14,-45 THRU -47,-1005,-1011,-1014,-1045 THRU -1047,
 -1308,-1309,-1312,-1315,-1328 THRU -1331
 233T3100-91,-136,-179,-249

Component Locations
 Figure 101

30-11-52

TEST PROCEDURE	REQUIRED RESULTS		COMPONENT TESTED
Test for continuity (less than 3 ohms) or open (greater than 15K ohms) between the specified pins.			
<p>J2-12 to J2-13 J2-7 to J2-8 J2-11 to J2-12 J2-9 to J2-10 J3-9 to J3-10 *[1]</p>	<p><u>S1 on</u> Open Con Con Con Con</p>	<p><u>S1 off</u> Con Open Open Open Open</p>	S1
<p>J3-6 to J3-15 J3-8 to J3-7 J3-14 to J3-13 J3-6 to J3-5</p>	<p><u>S2 on</u> Open Con Con Con</p>	<p><u>S2 off</u> Con Open Open Open</p>	S2
<p><u>For 233T3241-1,-5,-10,-11,-13,-14,-17,-20,-1001,-1005,-1010,-1011,-1013,-1014,-1017,-1020,-1306 thru -1309,-1311,-1312,-1314,-1315,-1317 and 233T3100-65,-91,-135,-136,-178,-179,-248,-249,-292 (MADE WITH 233T3241-1,-5,-1,-5,-10,-11,-13,-14,-20, RESPECTIVELY)</u></p>			

Functional Test
Figure 102 (Sheet 1)

TEST PROCEDURE	REQUIRED RESULTS		COMPONENT TESTED
J2-6 to J2-5	Con	Open	
<u>All Assemblies:</u>	<u>S3 on</u>	<u>S3 off</u>	S3
J1-11 to J1-8	Open	Con	
J1-5 to J1-3	Open	Con	
J1-2 to J1-1	Con	Open	
J1-11 to J1-9	Con	Open	
J1-5 to J1-6	Con	Open	
J1-10 to J1-4 *[2]	Open	Con	
J1-10 to J1-7 *[2]	Con	Open	
Set S1, S2, S3 to off.			
<u>For 233T3241-1,-5,-10,-11,-13,-14,-17,-20,-41 thru -47,-1001,-1005,-1010,-1011,-1013,-1014,-1017,-1020,-1041 thru -1047</u>			
J3-1 to J4 center pin		Con	J4
J3-2 to panel baseplate		Con	J4
J3-1 to J3-2		Open	J4

 Functional Test
 Figure 102 (Sheet 2)

30-11-52

TEST PROCEDURE	REQUIRED RESULTS	COMPONENT TESTED
<p><u>For 233T3241-1306 thru -1309, -1311, -1312, -1314, -1315, -1317, -1323 thru -1331; 233T3100-65, -91, -135, -136, -178, -179, -248, -249, -292</u></p> <p>Connect 5V ac to J3-1 and ground to J3-2. Monitor the lightplate light.</p> <p>Remove all connections.</p> <p><u>For 233T3241-8, -12, -15, -48 thru -50, -1008, -1012, -1015, -1048 thru -1050</u></p> <p>J3-18 to J4 center pin J3-19 to panel baseplate J3-18 to J3-19</p> <p><u>For 233T3241-1310, -1313, -1316, --1332 thru -1334; 233T3100-160, -180, -250</u></p> <p>Connect 5V ac to J3-18 and ground to J3-19. Monitor the lightplate light.</p> <p>Remove all connections.</p>	<p>Illuminate</p> <p>Con Con Open</p> <p>Illuminate</p>	<p>Lightplate J4</p> <p>J4 J4 J4</p> <p>Lightplate J4</p>

Functional Test
Figure 102 (Sheet 3)

TEST PROCEDURE	REQUIRED RESULTS	COMPONENT TESTED
<p><u>For 233T3241-1,-5,-10,-11,-13,-14,-17,-20,-41 thru -47,-1001,-1005,-1010,-1011,-1013,-1014,-1017,-1020,-1041 thru -1047,-1306 thru -1309,-1311,-1312,-1314,-1315,-1317,-1323 thru -1331;</u> <u>233T3100-65,-91,-135,-136,-178,-179,-248,-249,-292</u></p>	<p>Indicators (both bulbs) must be "on" only when specified</p>	
<p>Apply +28v dc to J2-3 and ground J2-4.</p>	<p>L2, VALVE S1, VALVE L3, ICING(-5,-11,-14,-45 thru -47,-1005,-1011,-1014,-1045 thru -1047,-1308,-1309,-1312,-1315,-1328 thru -1331; 233T3100-91,-136,-179,-249</p>	<p>L2 S1 L3</p>
<p>Disconnect J2-4 and ground J2-2</p>	<p>L2, VALVE</p>	<p>L2</p>
<p>Disconnect J2-2 and ground J2-1</p>	<p>S1, VALVE</p>	<p>S1</p>
<p>Disconnect J2-1 and ground J2-14</p>	<p>L3, ICING(-5,-11,-14,-45 thru -47,-1005,-1011,-1014,-1045 thru -1047,-1308,-1309,-1312,-1315,-1328 thru -1331; 233T3100-91,-136,-179,-249</p>	<p>L3</p>

Functional Test
Figure 102 (Sheet 4)

30-11-52

TEST PROCEDURE	REQUIRED RESULTS	COMPONENT TESTED
<p>Remove all connections.</p> <p>Ground J2-3. Apply +28v dc momentarily to:</p> <p>J2-4 J2-2 J2-1 J2-14 (-5,-11,-14,-45 thru -47, -1005,-1011,-1014,-1045 thru -1047,-1308,-1309,-1312,-1315, -1328 thru -1331; 233T3100-91, -136,-179,-249</p>	<p>(All indicators remain off) (All indicators remain off) (All indicators remain off) (All indicators remain off)</p>	<p>S1,L2,L3 L2 S1 L3</p>
<p>Remove 28v connections.</p>		
<p>Apply +28v dc to J3-3 and ground J3-4.</p>	<p>L1, VALVE S2, VALVE</p>	<p>L1 S2</p>
<p>Disconnect J3-4 and ground J3-12.</p>	<p>L1, VALVE</p>	<p>L1</p>
<p>Disconnect J3-12 and ground J3-11.</p>	<p>S2, VALVE</p>	<p>S2</p>
<p>Remove all connections.</p>		
<p>Ground J3-3. Apply +28v dc momentarily to:</p> <p>J3-4 J3-12 J3-11</p>	<p>(All indicators remain off) (All indicators remain off) (All indicators remain off)</p>	<p>L1,S2 L1 S2</p>
<p>Remove all connections.</p>		

Functional Test
Figure 102 (Sheet 5)

30-11-52

TEST PROCEDURE	REQUIRED RESULTS	COMPONENT TESTED
<p>Apply +5v ac to J3-1 and ground 5v return to J3-2.</p> <p>Remove all connections.</p> <p>End of tests for 233T3241-1,-5,-10,-11,-13,-14,-17,-20,-41 thru -47,-1001,-1005,-1010,-1011,-1013,-1014,-1017,-1020,-1041 thru -1047,-1306 thru -1309,-1311,-1312,-1314,-1315,-1317,-1323 thru -1331; 233T3100-65,-91,-135,-136,-178,-179,-248,-249,-292 -179,-248,-249,-292</p> <p><u>For 233T3241-8,-12,-15,-48 thru -50,-1008,-1012,-1015,-1048 thru -1050,-1310,-1313,-1316,-1332 thru -1334; 233T3100-160,-180,-250</u></p> <p>Connect +28v dc to J2-3,J2-5,J3-3 and J3-16. Ground 28v return momentarily to:</p> <p>J2-4 J2-2 J2-6</p> <p>J2-1 J3-4 J3-12</p> <p>J3-17 J3-11</p>	<p>S1 ON; S2 ON; S3 ON; when sw S1, S2 and S3 on (latched down) respectively</p> <p>Indicators (both bulbs) must be "on" only when specified</p> <p>L2, VALVE L2, VALVE S1, VALVE</p> <p>S1, VALVE L1, VALVE L1, VALVE</p> <p>S2, VALVE S2, VALVE</p>	<p>S1,S2,S3</p> <p>L2 L2 S1</p> <p>S1 L1 L1</p> <p>S2 S2</p>

Functional Test
Figure 102 (Sheet 6)

30-11-52

TEST PROCEDURE	REQUIRED RESULTS	COMPONENT TESTED
<p>Remove all connections.</p> <p>Ground 28v return to J2-3, J2-5, J3-3 and J3-16.</p> <p>Connect +28v dc momentarily to:</p> <p>J2-4 J2-2 J2-6</p> <p>J2-1 J3-4 J3-12</p> <p>J3-17 J3-11</p> <p>Remove all connections.</p> <p>Connect +5v ac to J3-18 and J3-1. With switches set to both on and off, connect 5v return momentarily</p> <p>J3-19</p> <p>J3-2</p> <p>Remove all connections. End of Test</p>	<p>(All indicators remain off for each connection)</p> <p>When off, S1 through S3 are lit. When each is turned on, both bulbs light on.</p> <p>S1 ON S2 ON S3 ON</p>	<p>L1 L1 S2</p> <p>S2 L2 L2</p> <p>S1 S1</p> <p>S1 S2 S3</p>

*[1] For all except 233T3241-41 thru -50, -1041 thru -1050, -1323 thru -1334, and 233T3100-65,-91, -135, -136, -160, -178, -179, -180, -248 thru -250, -292 MADE WITH 233T3241-41, -45, -41, -45, -48, -42, -46, -49, -43, -47, -50, -44, RESPECTIVELY

*[2] For 233T3241-41 thru -50, 1041 thru -1050, -1323 thru -1334, and 233T3100-65,-91, -135, -136, -160, -178, -179, -180, -248 thru -250, -292 MADE WITH 233T3241-41, -45, -41, -45, -48, -42, -46, -49, -43, -47, -50, -44, RESPECTIVELY

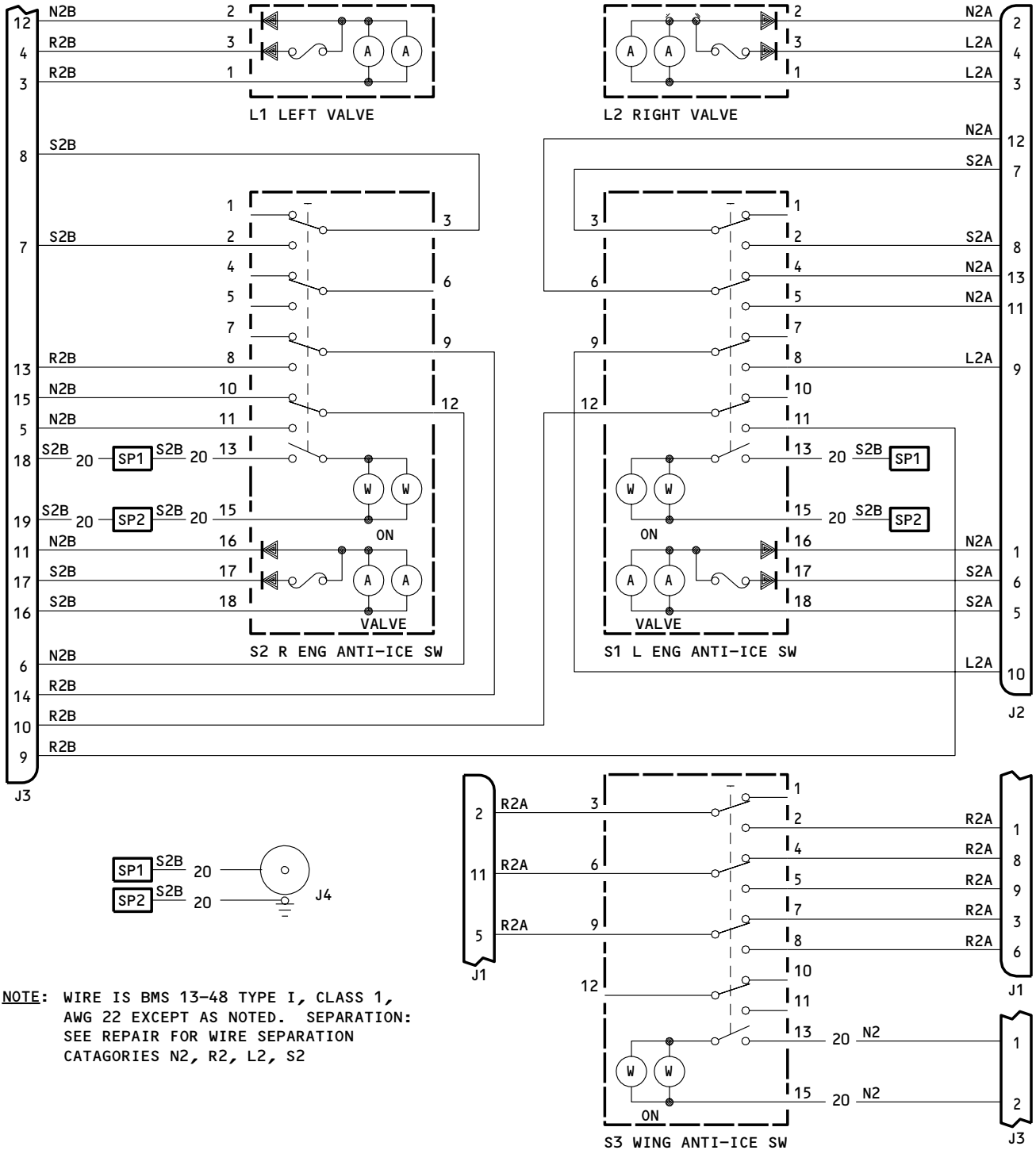
Functional Test
Figure 102 (Sheet 7)

30-11-52

TEST PROCEDURE	REQUIRED RESULTS		COMPONENT TESTED
<u>NOTE:</u> Continuity (Con) is less than 3 ohms. Open is more than 15K ohms.			
Apply 28v dc between pin J2-7 (+) and J2-11 (-).			
	<u>S1 on</u>	<u>S1 off</u>	
J2-10 to J2-12	Con	Open	K1,S1
Remove J2-11 and connect J2-13 to ground.			
J2-10 to J2-12	Open	Con	K1,S1
Remove all connections.			
Apply 28v dc between pin J3-8 (+) and J3-5 (-).			
	<u>S2 on</u>	<u>S2 off</u>	
J3-6 to J3-14	Con	Open	K2,S2
Remove J3-5 and connect J3-15 to ground.			
J3-6 to J3-14	Open	Con	K2,S2
Remove all connections.			
END OF TEST			

 Relay Test
 Figure 102A

30-11-52



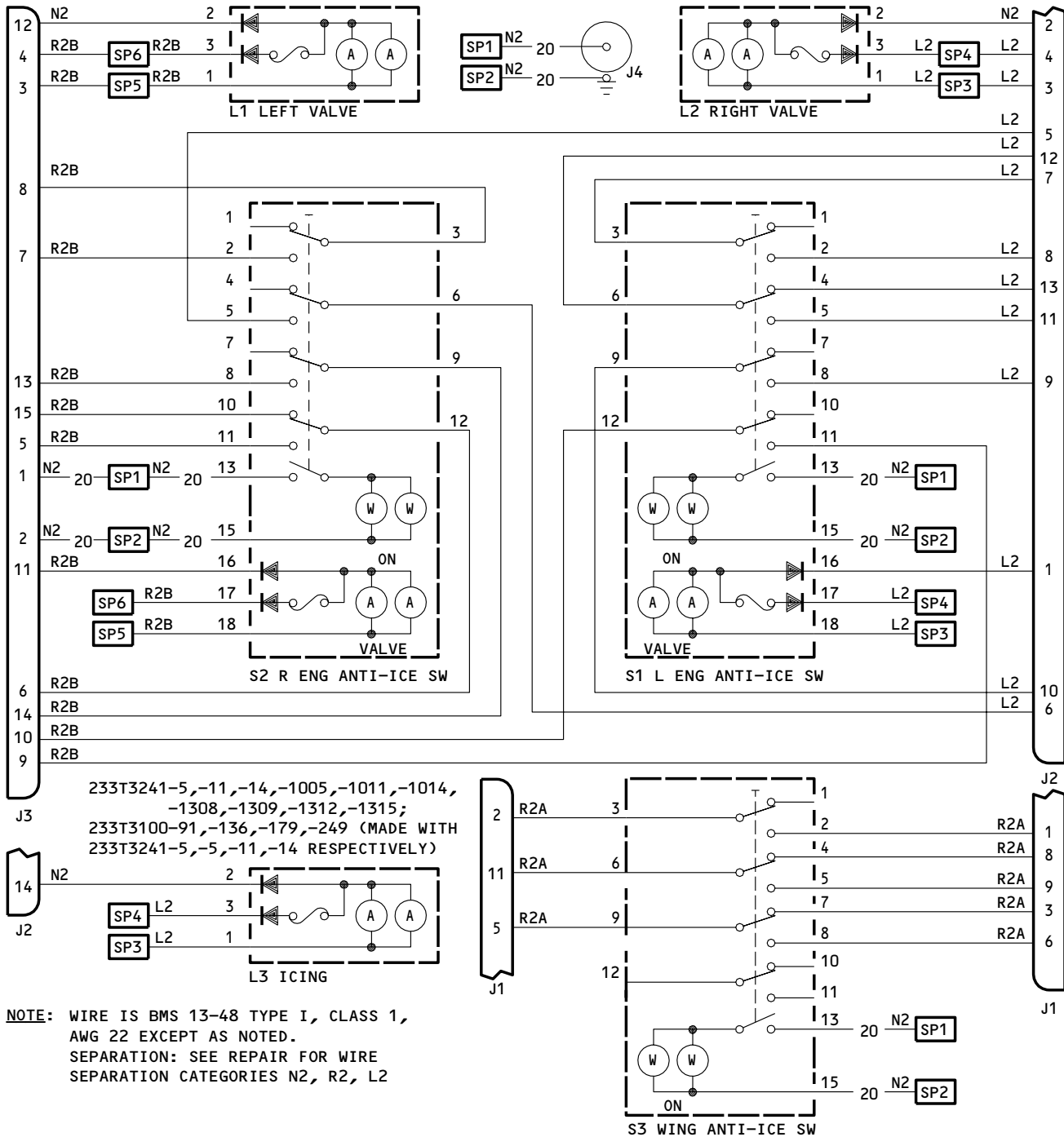
NOTE: WIRE IS BMS 13-48 TYPE I, CLASS 1, AWG 22 EXCEPT AS NOTED. SEPARATION: SEE REPAIR FOR WIRE SEPARATION CATAGORIES N2, R2, L2, S2

233T3241-8,-12,-15,-1008,-1012,-1015,-1310,-1313,-1316
233T3100-160,-180,-250 (MADE WITH 233T3241-8,-12,-15 RESPECTIVELY)

Schematic Diagram
Figure 103 (Sheet 1)

30-11-52

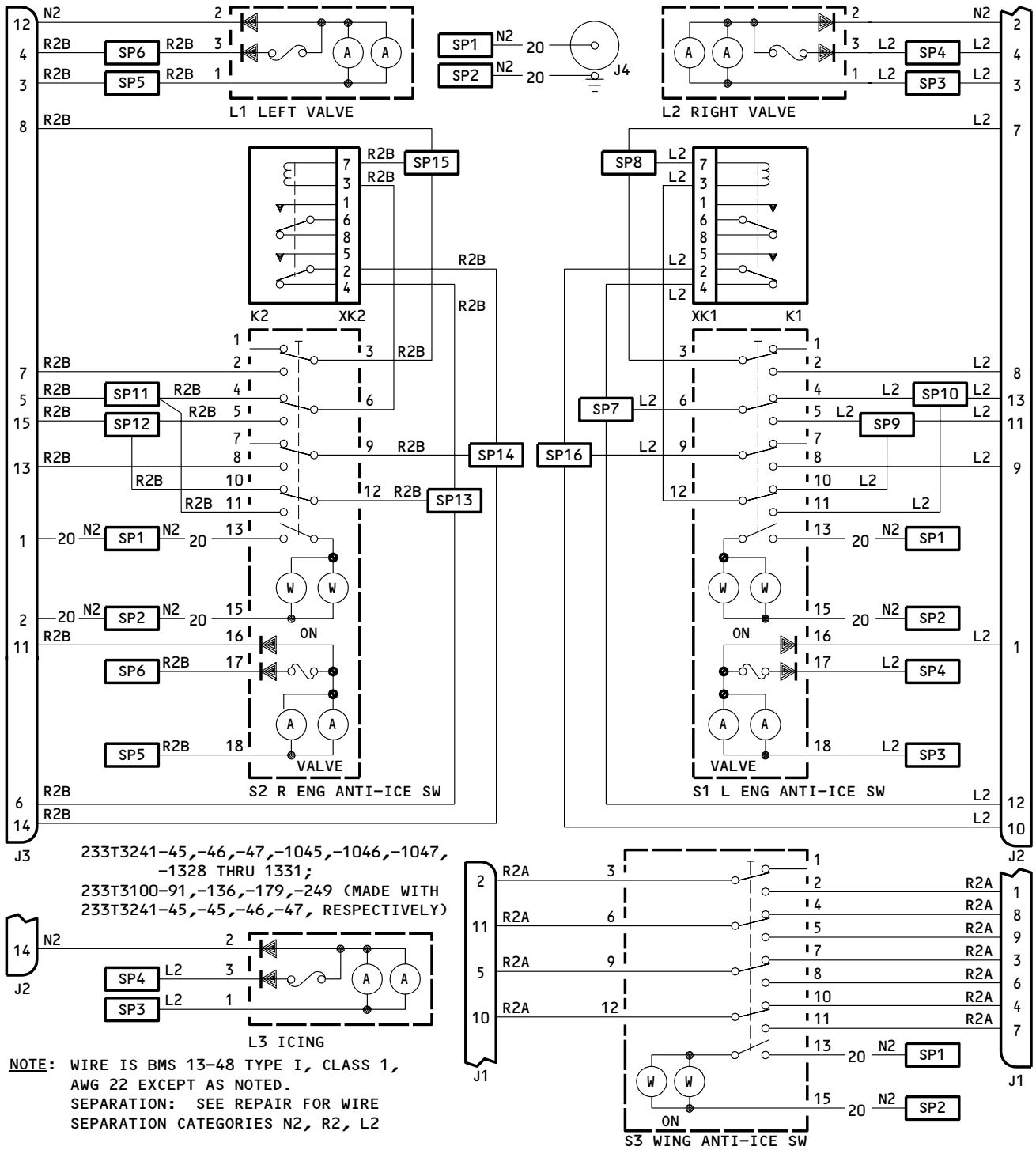
TESTING & TROUBLE SHOOTING
01.1 Page 111
Jul 01/03



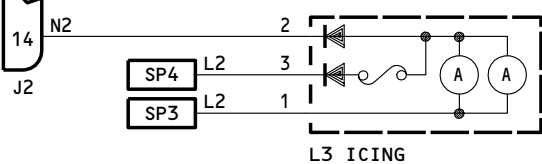
233T3241-1,-5,-10,-11,-13,-14,-17,-20,-1001,-1005,-1010,-1011,-1013,-1014,-1017,-1020,-1306 THRU -1309,-1311,-1312,-1314,-1315,-1317
 233T3100-65,-91,-135,-136,-178,-179,-248,-249,-292 (MADE WITH 233T3241-1,-5,-1,-5,-10,-11,-13,-14,-20 RESPECTIVELY)

Schematic Diagram
 Figure 103 (Sheet 2)

30-11-52



233T3241-45,-46,-47,-1045,-1046,-1047,
-1328 THRU 1331;
233T3100-91,-136,-179,-249 (MADE WITH
233T3241-45,-45,-46,-47, RESPECTIVELY)

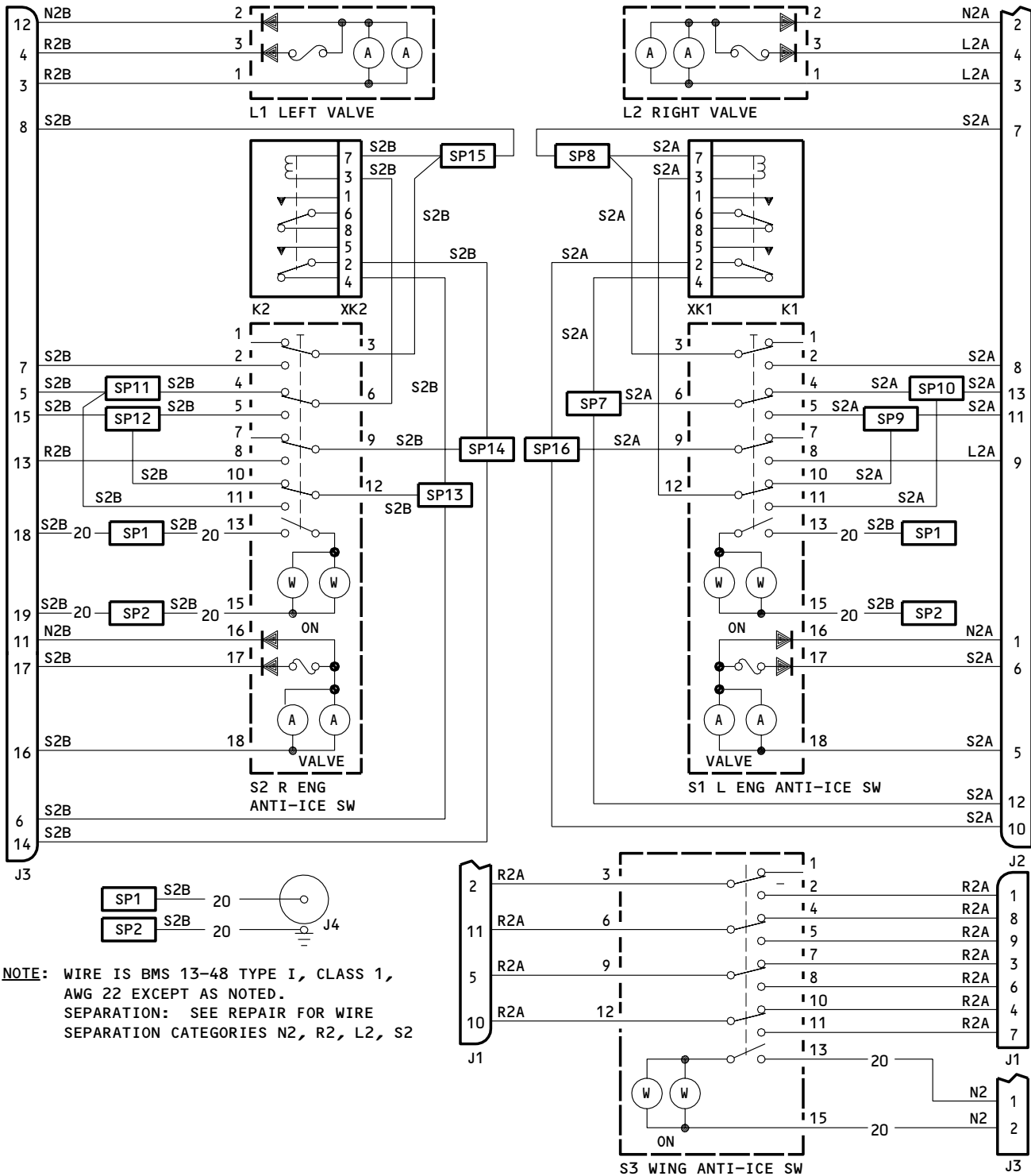


NOTE: WIRE IS BMS 13-48 TYPE I, CLASS 1,
AWG 22 EXCEPT AS NOTED.
SEPARATION: SEE REPAIR FOR WIRE
SEPARATION CATEGORIES N2, R2, L2

233T3241-41 THRU -47,-1041 THRU -1047,-1323 THRU -1331;
233T3100-65,-91,-135,-136,-178,-179,-248,-249,-292 (MADE WITH
233T3241-41,-45,-41,-45,-42,-46,-43,-47,-44 RESPECTIVELY)

Schematic Diagram
Figure 103 (Sheet 3)

30-11-52



233T3241-48,-49,-50,-1048,-1049,-1050,-1332 THRU -1334
 233T3100-160,-180,-250 (MADE WITH 233T3241-48,-49,-50 RESPECTIVELY)

Schematic Diagram
 Figure 103 (Sheet 4)

30-11-52

REPAIR

1. Materials

A. Varglas non-fray type H0 or HP sleeving (Varflex Corporation, 512 W. Court Street, Rome, New York 13440)

2. All repairs can be done using standard industry practices and procedures in 20-11-05 except as listed below.

A. When wires are replaced, a minimum spacing of one-quarter inch must be maintained between bundle categories labeled in the schematic. Wires labeled N2 may be bundled with wires of any category. Separators (63-9273-2) or Varglas sleeving may be used to assure proper spacing. Bundles are color-coded as follows: L (red), N (white), R (green), and S (blue).

B. When you replace the Korry lighted pushbutton switch, make sure that you use the switch with letter "D" imprinted on the master module of the switch. The Korry part number of the master module with the configuration "D" marked is 13206-001.

30-11-52

REPAIR-GENERAL

01.1

Page 601

Jul 01/03

ILLUSTRATED PARTS LIST

1. This section lists and illustrates replaceable or repairable component parts. The Illustrated Parts Catalog contains a complete explanation of the Boeing part numbering system.

2. Indentures show parts to relationships as follows:

Assembly

Detail Parts for Assembly

Subassembly

Attaching Parts for Subassembly

Detail Parts for Subassembly

Detail Installation Parts (Included only if installation parts may be returned to shop as part of assembly)

3. One use code letter (A, B, C, etc.) is assigned in the EFF CODE column for each variation of top assembly. All listed parts are used on all top assemblies except when limitations are shown by use code letter opposite individual part entries.

4. Letter suffixes (alpha-variants) are added to item numbers for optional parts, Service Bulletin modification parts, configuration differences (except left- and right-hand parts), product improvement parts, and parts added between two sequential item numbers. The alpha-variant is not shown on illustrations when appearance and location of all variants of the parts are the same.

5. Service Bulletin modifications are shown by the notations PRE SB XXXX and POST SB XXXX.

A. When a new top assembly part number is assigned by Service Bulletin, the notations appear at the top assembly level only. The configuration differences at detail part level are then shown by use code letter.

B. When the top assembly part number is not changed by the Service Bulletin, the notations appear at the detail part level.

6. Parts Interchangeability

Optional
(OPT)

The parts are optional to and interchangeable with other parts having the same item number.

Supersedes, Superseded By
(SUPSDS, SUPSD BY)

The part supersedes and is not interchangeable with the original part.

Replaces, Replaced By
(REPLS, REPLD BY)

The part replaces and is interchangeable with, or is an alternate to, the original part.

30-11-52

ILLUSTRATED PARTS LIST

01.1 Page 1001

Jul 01/88

VENDORS

00779 TYCO ELECTRONICS CORP
2800 FULLING MILL ROAD PO BOX 3608
MIDDLETOWN, PENNSYLVANIA 17057

01526 GENICOM CORP
ONE GENICOM DRIVE
WAYNESBORO, VIRGINIA 22980-1999

02660 AMPHENOL CORP INDUSTRIAL TECHNOLOGY DIV
358 HALL AVENUE PO BOX 384
WALLINGFORD, CONNECTICUT 06492

03743 APPLETON ELECTRIC CO DIV OF EMERSON ELECTRIC CO
2205 12TH AVENUE
SOUTH MILWAUKEE, WISCONSIN 53172-2541

05617 IDD AEROSPACE CORP
18225 NORTHEAST 76TH STREET PO BOX 97056
REDMOND, WASHINGTON 98073-9756

08524 DEUTSCH FASTENER CORP SEE CODE V97928

09026 BABCOCK ELECTRONICS CORP CONTROL PRODUCT DIV SEE
ESTERLINE ELECTRONICS CORP V82050

09922 FRAMATOME CONNECTORS FRANCE
50 GRUMBACHER ROAD
YORK, PENNSYLVANIA 17402

12324 DUPREE INC STAKE FASTENER CO
14395 RAMONA PO BOX 1797
CHINO, CALIFORNIA 91708

13556 LABINAL COMPONENTS AND SYS CINCH MILITARY AEROSPACE
DIV 8821 SCIENCE CENTER DRIVE
MINNEAPOLIS, MINNESOTA 55428-3619

30-11-52

ILLUSTRATED PARTS LIST
01.1 Page 1002
Nov 01/01

VENDORS

15653 FAIRCHILD FASTENERS KAYNAR PRODUCTS DIV
800 SOUTH COLLEGE BLVD
FULLERTON, CALIFORNIA 92831-3001

35344 LEACH INTERNATIONAL OF NORTH AMERICA
6900 ORANGETHROPE AVE PO BOX 5032
BUENA PARK, CALIFORNIA 90622-5032

49367 PYLE-NATIONAL CO DIV OF BRAND-REX CO
1334 NORTH KOSTNER AVENUE
CHICAGO, ILLINOIS 60651-1605

58614 COMMUNICATIONS INSTRUMENTS INC
HWY 74 EAST PO BOX 520
FAIRVIEW, NORTH CAROLINA 28730

58982 PRECISION CONNECTOR DESIGNS INC
CENTENNIAL PARK 2 TECHNOLOGY DRIVE
PEABODY, MASSACHUSETTS 01960

60119 MONADNOCK CO THE
18301 ARENTH AVENUE PO BOX 1222
CITY OF INDUSTRY, CALIFORNIA 91749

71482 CP CLARE CORP NORTH AMERICA SALES OPERATIONS
601B CAMPUS DRIVE
ARLINGTON HEIGHTS, ILLINOIS 60004

72962 HARVARD INDUSTRIES INC
3 WERNER WAY SUITE 210
LEBANON, NEW JERSEY 08833

81590 KORRY ELECTRONIC INC SUB OF CRITON CORP
901 DEXTER AVENUE NORTH
SEATTLE, WASHINGTON 98109-3515

96182 EATON CORP AEROSPACE AND COMMERCIAL CONTROLS DIV MSC PROD
1640 MONROVIA
COSTA MESA, CALIFORNIA 92627-4405

30-11-52

ILLUSTRATED PARTS LIST
01.1 Page 1003
Nov 01/01

REFERENCE DESIGNATOR INDEX (SEE SCHEMATIC DIAGRAM)		
REFERENCE DESIGNATOR	PART NUMBER	FIG-ITEM
J1	ZZWAC1712-12P8	1-80
J1	ZZWAC1712-12P8	2-85
J1	ZZWAC1712-12P8	3-80
J1	ZZWAC1712-12P8	4-85
J2	ZZWAC1714-15P	1-75
J2	ZZWAC1714-15P	2-80
J2	ZZWAC1714-15P	3-75
J2	ZZWAC1714-15P	4-80
J3	ZZWAC1714-15P7	1-85
J3	ZZWAC1714-15P7	2-90
J3	ZZWAC1714-15P7	3-85
J3	ZZWAC1714-15P7	4-90
J3	ZZWAC1716-24P8	1-85A
J4	800000121-1	15
J4	800000121-1	2-15
J4	800000121-1	3-15
J4	800000121-1	4-15
L1	BCREF6200	1-20
L1	BCREF6200	20B
L1	BCREF6200	3-20
L1	BCREF6200	20B
L1	BCREF6200	4-20
L1	BCREF6200	20B
L1	BCREF6200	2-20
L1	BCREF6200	20B
L1	BCREF8486	1-20A
L1	BCREF8486	2-20A
L1	BCREF8486	3-20A
L1	BCREF8486	4-20A
L2	BCREF6200	1-20
L2	BCREF6200	20B

30-11-52

 ILLUSTRATED PARTS LIST
 01.1 Page 1004
 Jul 01/03

REFERENCE DESIGNATOR INDEX (SEE SCHEMATIC DIAGRAM)		
REFERENCE DESIGNATOR	PART NUMBER	FIG-ITEM
L2	BCREF6200	2-20
L2	BCREF6200	20B
L2	BCREF6200	3-20
L2	BCREF6200	20B
L2	BCREF6200	4-20
L2	BCREF6200	20B
L2	BCREF8486	1-20A
L2	BCREF8486	2-20A
L2	BCREF8486	3-20A
L2	BCREF8486	4-20A
L3	BCREF6525	2-25A
L3	BCREF6525	25C
L3	BCREF8512	25B
L3	BCREF6525	4-25
L3	BCREF6525	25B
L3	BCREF8512	4-25A
S1	BCREFA0512	1-10J
S1	BCREFA0512	10K
S1	BCREFA0512	10N
S1	BCREFA0512	10R
S1	BCREFA0512	10T
S1	BCREFA0512	10Y
S1	BCREFA0512	11B
S1	BCREFA0512	2-10H
S1	BCREFA0512	10M
S1	BCREFA0512	10S
S1	BCREFA0512	3-10C
S1	BCREFA0512	10E
S1	BCREFA0512	10H
S1	BCREFA0512	10K
S1	BCREFA0512	3-11B
S1	BCREFA0512	4-10D
S1	BCREFA0512	10N
S1	BCREFA5012	4-10H
S1	BCREF7613	1-10C
S1	BCREF7613	10D
S1	BCREF7613	10Q
S1	BCREF7613	10S
S1	BCREF7613	10X
S1	BCREF7613	11A

30-11-52

ILLUSTRATED PARTS LIST
01.1 Page 1005
Jul 01/03

REFERENCE DESIGNATOR INDEX (SEE SCHEMATIC DIAGRAM)		
REFERENCE DESIGNATOR	PART NUMBER	FIG-ITEM
S1	BCREF7613	2-10C
S1	BCREF7613	10L
S1	BCREF7613	10R
S1	BCREF7613	3-10B
S1	BCREF7613	10G
S1	BCREF7613	10J
S1	BCREF7613	3-11A
S1	BCREF7613	4-10B
S1	BCREF7613	10F
S1	BCREF7613	10G
S1	BCREF7613	10M
S1	S231T290-5027	1-10M
S1	S231T290-5027	10W
S1	S231T290-5027	11D
S1	S231T290-5027	2-10G
S1	S231T290-5027	10Q
S1	S231T290-5027	10U
S1	S231T290-5027	3-10D
S1	S231T290-5027	10N
S1	S231T290-5027	3-11D
S1	S231T290-5027	4-10C
S1	S231T290-5027	10L
S1	S231T290-5027	10Q
S1	851-30768-2027	1-10
S1	851-30768-2027	10P
S1	851-30768-2027	10V
S1	851-30768-2027	2-10
S1	851-30768-2027	10J
S1	851-30768-2027	10P
S1	851-30768-2027	10T
S1	851-30768-2027	3-10
S1	851-30768-2027	10F
S1	851-30768-2027	10M
S1	851-30768-2027	3-11C
S1	851-30768-2027	4-10
S1	851-30768-2027	10E
S1	851-30768-2027	10K
S1	851-30768-2027	10P

30-11-52

 ILLUSTRATED PARTS LIST
 01.1 Page 1006
 Jul 01/03

REFERENCE DESIGNATOR INDEX (SEE SCHEMATIC DIAGRAM)		
REFERENCE DESIGNATOR	PART NUMBER	FIG-ITEM
S1	851-30768-3027	1-10B
S1	851-30768-3027	10U
S1	851-30768-3027	2-10B
S1	851-30768-3027	10N
S1	851-30768-3027	3-10A
S1	851-30768-3027	10L
S1	851-30768-3027	4-10A
S1	851-30768-3027	10J
S2	BCREFA0512	1-10J
S2	BCREFA0512	10K
S2	BCREFA0512	10N
S2	BCREFA0512	10R
S2	BCREFA0512	10T
S2	BCREFA0512	10Y
S2	BCREFA0512	11B
S2	BCREFA0512	2-10H
S2	BCREFA0512	10M
S2	BCREFA0512	10S
S2	BCREFA0512	3-10C
S2	BCREFA0512	10E
S2	BCREFA0512	10H
S2	BCREFA0512	10K
S2	BCREFA0512	3-11B
S2	BCREFA0512	4-10D
S2	BCREFA0512	10N
S2	BCREFA5012	4-10H
S2	BCREF7613	1-10C
S2	BCREF7613	10D
S2	BCREF7613	10Q
S2	BCREF7613	10S
S2	BCREF7613	10X
S2	BCREF7613	11A

30-11-52

REFERENCE DESIGNATOR INDEX (SEE SCHEMATIC DIAGRAM)		
REFERENCE DESIGNATOR	PART NUMBER	FIG-ITEM
S2	BCREF7613	2-10C
S2	BCREF7613	10L
S2	BCREF7613	10R
S2	BCREF7613	3-10B
S2	BCREF7613	10G
S2	BCREF7613	10J
S2	BCREF7613	3-11A
S2	BCREF7613	4-10B
S2	BCREF7613	10F
S2	BCREF7613	10G
S2	BCREF7613	10M
S2	S231T290-5027	1-10M
S2	S231T290-5027	10W
S2	S231T290-5027	11D
S2	S231T290-5027	2-10G
S2	S231T290-5027	10Q
S2	S231T290-5027	10U
S2	S231T290-5027	3-10D
S2	S231T290-5027	10N
S2	S231T290-5027	3-11D
S2	S231T290-5027	4-10C
S2	S231T290-5027	10L
S2	S231T290-5027	10Q
S2	851-30768-2027	1-10
S2	851-30768-2027	10P
S2	851-30768-2027	10V
S2	851-30768-2027	2-10
S2	851-30768-2027	10J
S2	851-30768-2027	10P
S2	851-30768-2027	10T

30-11-52

ILLUSTRATED PARTS LIST
01.1 Page 1008
Jul 01/03

REFERENCE DESIGNATOR INDEX (SEE SCHEMATIC DIAGRAM)		
REFERENCE DESIGNATOR	PART NUMBER	FIG-ITEM
S2	851-30768-2027	3-10
S2	851-30768-2027	10F
S2	851-30768-2027	10M
S2	851-30768-2027	11C
S2	851-30768-2027	4-10
S2	851-30768-2027	10E
S2	851-30768-2027	10K
S2	851-30768-2027	10P
S2	851-30768-3027	1-10B
S2	851-30768-3027	2-10B
S2	851-30768-3027	3-10A
S2	851-30768-3027	10L
S2	851-30768-3027	4-10A
S2	851-30768-3027	10J
S3	BCREFA0503	1-5F
S3	BCREFA0503	5G
S3	BCREFA0503	5L
S3	BCREFA0503	5P
S3	BCREFA0503	5R
S3	BCREFA0503	5W
S3	BCREFA0503	5Y
S3	BCREFA0503	2-5G
S3	BCREFA0503	5L
S3	BCREFA0503	5R
S3	BCREFA0503	3-5C
S3	BCREFA0503	5E
S3	BCREFA0503	5H
S3	BCREFA0503	5K
S3	BCREFA0503	5Q
S3	BCREFA0503	4-5D
S3	BCREFA0503	5H
S3	BCREFA0503	5N

30-11-52

ILLUSTRATED PARTS LIST
01.1 Page 1009
Jul 01/03

REFERENCE DESIGNATOR INDEX (SEE SCHEMATIC DIAGRAM)		
REFERENCE DESIGNATOR	PART NUMBER	FIG-ITEM
S3	BCREF7604	1-5C
S3	BCREF7604	5D
S3	BCREF7604	5N
S3	BCREF7604	5Q
S3	BCREF7604	5V
S3	BCREF7604	5X
S3	BCREF7604	2-5C
S3	BCREF7604	5J
S3	BCREF7604	5Q
S3	BCREF7604	5K
S3	BCREF7604	3-5B
S3	BCREF7604	5G
S3	BCREF7604	5J
S3	BCREF7604	5P
S3	BCREF7604	4-5B
S3	BCREF7604	5F
S3	BCREF7604	5G
S3	BCREF7604	5J
S3	BCREF7604	5M
S3	S231T290-5012	1-5K
S3	S231T290-5012	5U
S3	S231T290-5012	6A
S3	S231T290-5012	2-5F
S3	S231T290-5012	5P
S3	S231T290-5012	5T
S3	S231T290-5012	3-5D
S3	S231T290-5012	5N
S3	S231T290-5012	5S
S3	S231T290-5012	4-5C
S3	S231T290-5012	5L
S3	S231T290-5012	5Q

30-11-52

ILLUSTRATED PARTS LIST
01.1 Page 1010
Jul 01/03

REFERENCE DESIGNATOR INDEX (SEE SCHEMATIC DIAGRAM)		
REFERENCE DESIGNATOR	PART NUMBER	FIG-ITEM
S3	851-30768-2012	1-5
S3	851-30768-2012	5M
S3	851-30768-2012	5T
S3	851-30768-2012	5Z
S3	851-30768-2012	2-5
S3	851-30768-2012	5H
S3	851-30768-2012	5N
S3	851-30768-2012	5S
S3	851-30768-2012	3-5
S3	851-30768-2012	5F
S3	851-30768-2012	5M
S3	851-30768-2012	5R
S3	851-30768-2012	4-5
S3	851-30768-2012	5E
S3	851-30768-2012	5K
S3	851-30768-2012	5P
S3	851-30768-3012	1-5B
S3	851-30768-3012	5S
S3	851-30768-3012	2-5B
S3	851-30768-3012	5M
S3	851-30768-3012	3-5A
S3	851-30768-3012	5L
S3	851-30768-3012	4-5A

30-11-52

PART NUMBER	AIRLINE PART NO.	FIG.	ITEM	TTL REQ
BACC45FN12-12P8		1	80	1
		2	85	1
		3	80	1
		4	85	1
BACC45FN14-15P		1	75	1
		2	80	1
		3	75	1
		4	80	1
BACC45FN14-15P7		1	85	1
		2	90	1
		3	85	1
		4	90	1
BACC45FN16-24P8		1	85A	1
		3	85A	1
BACC47CN1		1	105	10
		2	110	10
		3	105	10
		3	105A	10
		4	110	10
		4	110A	10
BACN10NW1		1	70	6
		2	75	6
		3	70	6
		4	75	6
BACN10PA06-6		1	35	2
		2	40	2
		3	35	2
		4	40	2
BACP10U0225N		1	45	1
		2	50	1
		3	45	1
		4	50	1
BACR13CD2		1	120	2
		2	120	2
		3	120	2
		3	120A	2
		4	120	2
		4	120A	2
BACS12CB04-5		1	65	
		2	70	
BACS12CB06-5		1	50	
		2	55	
		3	50	

30-11-52

 ILLUSTRATED PARTS LIST
 01.1 Page 1012
 Jul 01/03

PART NUMBER	AIRLINE PART NO.	FIG.	ITEM	TTL REQ
BACS16AG1		1	125	2
		2	125	2
		3	125	2
		3	125A	2
		4	125	2
		4	125A	2
BACS21DD1B		1	40	4
		2	45	4
		3	40	4
		4	45	4

30-11-52

PART NUMBER	AIRLINE PART NO.	FIG.	ITEM	TTL REQ
BCREFA0503		1	5F	1
		1	5G	1
		1	5H	
		1	5L	1
		1	5P	1
		1	5R	1
		1	5W	1
		1	5Y	1
		2	5D	
		2	5G	1
		2	5L	1
		2	5R	1
		3	5C	1
		3	5E	1
		3	5H	1
		3	5K	1
		3	5Q	1
		4	5D	1
		4	5H	1
		4	5N	1
		1	10J	2
		1	10K	2
		1	10L	
		1	10N	2
		1	10R	2
		1	10T	2
		1	10Y	2
		1	11B	2
		2	10F	
		2	10H	2
		2	10S	2
		3	10C	2
	3	10E	2	
	3	10H	2	
	3	10K	2	
	3	11B	2	
	4	10D	2	
	4	10N	2	
BCREFA5012		2	10M	2
		4	10H	2

30-11-52

 ILLUSTRATED PARTS LIST
 01.1 Page 1014
 Jul 01/03

PART NUMBER	AIRLINE PART NO.	FIG.	ITEM	TTL REQ	
BCREF6200		1	20	2	
		1	20B	2	
		2	20	2	
		2	20B	2	
		3	20	2	
		3	20B	2	
		4	20	2	
		4	20B	2	
	BCREF6525		2	25A	1
			2	25C	1
		4	25	1	
		4	25B	1	

30-11-52

PART NUMBER	AIRLINE PART NO.	FIG.	ITEM	TTL REQ	
BCREF7604		1	5C	1	
		1	5D	1	
		1	5N	1	
		1	5Q	1	
		1	5V	1	
		1	5X	1	
		2	5C	1	
		2	5J	1	
		2	5K	1	
		2	5M	1	
		2	5Q	1	
		3	5B	1	
		3	5G	1	
		3	5J	1	
		3	5P	1	
		4	5B	1	
		4	5F	1	
		4	5G	1	
		4	5J	1	
		4	5M	1	
		1	10C	2	
		1	10D	2	
		1	10Q	2	
		1	10S	2	
		1	10X	2	
		1	11A	2	
		2	10C	2	
		2	10K	2	
		2	10L	2	
		2	10R	2	
		3	10B	2	
		3	10G	2	
		3	10J	2	
		3	11A	2	
		4	10B	2	
		4	10F	2	
		4	10G	2	
		4	10M	2	
	BCREF8486		1	20A	2
			2	20A	2
		3	20A	2	
		4	20A	2	
BCREF8512		2	25B	1	
		4	25A	1	

30-11-52

 ILLUSTRATED PARTS LIST
 01.1 Page 1016
 Jul 01/03

PART NUMBER	AIRLINE PART NO.	FIG.	ITEM	TTL REQ
BR16S233		1	120	2
		2	120	2
		3	120	2
		3	120A	2
		4	120	2
		4	120A	2
C48-10R12-12P8-10		1	80	1
		2	85	1
		3	80	1
		4	85	1
C48-10R14-15P102		1	75	1
		2	80	1
		3	75	1
		4	80	1
C48-10R14-15P7-10		1	85	1
		2	90	1
		3	85	1
		4	90	1
C48-10R16-24P8-10		1	85A	1
		3	85A	1
C48-2335-02		1	105	10
		2	110	10
		3	105	10
		3	105A	10
		4	110	10
		4	110A	10
DBMB1400-6A1		1	40	4
		2	45	4
		3	40	4
		4	45	4
EE4AA005		1	120	2
		2	120	2
		3	120	2
		3	120A	2
		4	120	2
		4	120A	2
HFW1204K01		1	120	2
		2	120	2
		3	120	2
		3	120A	2
		4	120	2
		4	120A	2

30-11-52

ILLUSTRATED PARTS LIST
01.1 Page 1017
Jul 01/03

PART NUMBER	AIRLINE PART NO.	FIG.	ITEM	TTL REQ
HFW1206K03		1	120	2
		2	120	2
		3	120	2
		3	120A	2
		4	120	2
		4	120A	2
K19798-04		1	70	6
		2	75	6
		3	70	6
		4	75	6
LRM20W16F74		1	105	10
		2	110	10
		3	105	10
		3	105A	10
		4	110	10
		4	110A	10
MS35338-41		1	55	3
		2	60	3
		3	55	3
		4	60	3
M39029-1-101		1	110	15
		2	115	15
		3	110	15
		3	110A	15
		4	115	15
		4	115A	15
M39029-1-16-20		1	100	44
		2	105	47
		3	100	44
		4	105	47
		4	105A	47
NAS1801-04-5		1	65A	6
		2	70A	6
		3	65	6
		4	70	6
NAS1801-06-5		1	50A	3
		2	55B	3
		3	50A	3
		4	55	3
NAS514P632-5		1	30	3
		2	35	3
		3	30	3
		4	35	3
RMA4812-160-40		1	70	6
		2	75	6
		3	70	6
		4	75	6

30-11-52

 ILLUSTRATED PARTS LIST
 01.1 Page 1018
 Jul 01/03

PART NUMBER	AIRLINE PART NO.	FIG.	ITEM	TTL REQ	
RSE120026		1	125	2	
		2	125	2	
		3	125	2	
		3	125A	2	
		4	125	2	
		4	125A	2	
SF6G6CBB5D		1	35	2	
		2	40	2	
		3	35	2	
		4	40	2	
S231T290-1012		1	5C	1	
		1	5D	1	
		1	5N	1	
		1	5Q	1	
		1	5V	1	
		1	5X	1	
		2	5C	1	
		2	5J	1	
		2	5K	1	
		2	5Q	1	
		3	5B	1	
		3	5G	1	
		3	5J	1	
		3	5P	1	
		4	5B	1	
		4	5F	1	
		4	5G	1	
		4	5M	1	
	S231T290-1027		1	10C	2
			1	10D	2
		1	10Q	2	
		1	10S	2	
		1	10X	2	
		1	11A	2	
		2	10C	2	
		2	10K	2	
		2	10L	2	
		2	10R	2	
		3	10B	2	
		3	10G	2	
		3	10J	2	
		3	11A	2	
		4	10B	2	
		4	10F	2	
	4	10G	2		
	4	10M	0		

30-11-52

ILLUSTRATED PARTS LIST
01.1 Page 1019
Jul 01/03

PART NUMBER	AIRLINE PART NO.	FIG.	ITEM	TTL REQ	
S231T290-2012		1	5	1	
		1	5M	1	
		1	5T	1	
		1	5Z	1	
		2	5	1	
		2	5H	1	
		2	5N	1	
		2	5S	1	
		3	5	1	
		3	5F	1	
		3	5M	1	
		3	5R	1	
		4	5	1	
		4	5E	1	
		4	5K	1	
		4	5P	1	
	S231T290-2027		1	10	2
			1	10P	2
			1	10V	2
			1	11C	2
		2	10	2	
		2	10J	2	
		2	10P	2	
		2	10T	2	
		3	10	2	
		3	10F	2	
		3	10M	2	
		3	11C	2	
		4	10	2	
		4	10E	2	
		4	10K	0	
		4	10P	0	
S231T290-3012		1	5B	1	
		1	5S	1	
		2	5B	1	
		2	5M	1	
		3	5A	1	
		3	5L	1	
		4	5A	1	
		4	5J	1	

30-11-52

 ILLUSTRATED PARTS LIST
 01.1 Page 1020
 Jul 01/03

PART NUMBER	AIRLINE PART NO.	FIG.	ITEM	TTL REQ	
S231T290-3027		1	10B	2	
		1	10U	2	
		2	10B	2	
		2	10N	2	
		3	10A	2	
		3	10L	2	
		4	10A	2	
		4	10J	2	
	S231T290-4012		1	5E	
			1	5F	1
		1	5G	1	
		1	5L	1	
		1	5P	1	
		1	5R	1	
		1	5W	1	
		1	5Y	1	
		2	5G	1	
		2	5L	1	
		2	5R	1	
		3	5C	1	
		3	5E	1	
		3	5H	1	
		3	5K	1	
		3	5Q	1	
		4	5D	1	
		4	5H	1	
		4	5N	1	

30-11-52

PART NUMBER	AIRLINE PART NO.	FIG.	ITEM	TTL REQ
S231T290-4027		1	10E	
		1	10F	
		1	10G	
		1	10J	2
		1	10K	2
		1	10N	2
		1	10R	2
		1	10Y	2
		1	11B	2
		2	10D	
		2	10H	2
		2	10M	2
		2	10S	2
		3	10C	2
		3	10E	2
		3	10H	2
		3	11B	2
		4	10D	2
		4	10H	2
		4	10N	2
S231T290-5012		1	10T	2
		3	10K	2
		1	5J	
		1	5K	1
		1	5U	1
		1	6A	1
		2	5E	
		2	5F	1
		2	5P	1
		2	5T	1
		3	5D	1
		3	5N	1
		3	5S	1
		4	5C	1
		4	5L	1
	4	5Q	1	

30-11-52

 ILLUSTRATED PARTS LIST
 01.1 Page 1022
 Jul 01/03

PART NUMBER	AIRLINE PART NO.	FIG.	ITEM	TTL REQ	
S231T290-5027		1	10H		
		1	10M	2	
		1	10W	2	
		1	11D	2	
		2	10E		
		2	10G	2	
		2	10Q	2	
		2	10U	2	
		3	10D	2	
		3	10N	2	
		3	11D	2	
		4	10C	2	
		4	10L		
		4	10Q		
	S231T300-1115		1	20	2
			1	20B	2
		2	20	2	
		2	20B	2	
		3	20	2	
		3	20B	2	
		4	20	2	
		4	20B	2	
S231T300-1280 S231T300-2115			2	25	
			1	20A	2
S233T100-1061		2	20A	2	
		3	20A	2	
		4	20A	2	
		4	2	1	
S233T100-1071		4	2	1	
		4	2A	1	
S233T100-6027 ZZL4020-36LT		4	2A	1	
		3	2A	1	
ZZWAC1712-12P8		1	105	10	
		2	110	10	
		3	105	10	
		3	105A	10	
		4	110	10	
		4	110A	10	
		1	80	1	
		2	85	1	
ZZWAC1714-15P		3	80	1	
		4	85	1	
		1	75	1	
		2	80	1	
	3	75	1		
	4	80	1		

30-11-52

PART NUMBER	AIRLINE PART NO.	FIG.	ITEM	TTL REQ
ZZWAC1714-15P7		1	85	1
		2	90	1
		3	85	1
		4	90	1
ZZWAC1716-24P8		1	85A	1
		3	85A	1
231T300-1280		2	25A	1
		2	25C	1
		4	25	1
		4	25B	1
231T300-2280		2	25B	1
		4	25A	1
233T3100-135		1	2Y	RF
		3	1A	RF
233T3100-136		1	2Z	RF
		4	1B	RF
233T3100-160		1	3	RF
		3	1B	RF
233T3100-178		1	3A	RF
		3	1C	RF
233T3100-179		1	3B	RF
		4	1C	RF
233T3100-180		1	3C	RF
		3	1D	RF
233T3100-248		1	3D	RF
		3	1E	RF
233T3100-249		1	3E	RF
		4	1D	RF
233T3100-250		1	3F	RF
		3	1F	RF
233T3100-292		1	3G	RF
		3	1G	RF
233T3100-65		1	2W	RF
		3	1	RF
233T3100-91		1	2X	RF
		4	1A	RF
233T3241-1		1	1	RF
		3	3	1
233T3241-10		1	1C	RF
		3	3B	1
233T3241-1001		1	2	RF
		3	3P	1
233T3241-1005		1	2A	RF
		2	1G	RF
233T3241-1008		4	3F	1
		1	2B	RF
		3	3Q	1

30-11-52

 ILLUSTRATED PARTS LIST
 01.1 Page 1024
 Jul 01/03

PART NUMBER	AIRLINE PART NO.	FIG.	ITEM	TTL REQ
233T3241-1010		1	2C	RF
		3	3R	1
233T3241-1011		1	2D	RF
		2	1H	RF
		4	3G	1
233T3241-1012		1	2E	RF
		3	3S	1
233T3241-1013		1	2F	RF
		3	3T	1
233T3241-1014		1	2G	RF
		2	1J	RF
		4	3H	1
233T3241-1015		1	2H	RF
		3	3U	1
233T3241-1017		1	2J	RF
233T3241-1020		1	2K	RF
		3	3V	1
233T3241-1041		1	2L	RF
		3	3W	1
233T3241-1042		1	2M	RF
		3	3X	1
233T3241-1043		1	2N	RF
		3	3Y	1
233T3241-1044		1	2P	RF
		3	3Z	1
233T3241-1045		1	2Q	RF
		2	1K	RF
		4	3J	1
233T3241-1046		1	2R	RF
		2	1L	RF
		4	3K	1
233T3241-1047		1	2S	RF
		2	1M	RF
		4	3L	1
233T3241-1048		1	2T	RF
		3	4	1
233T3241-1049		1	2U	RF
		3	4A	1
233T3241-1050		1	2V	RF
		3	4B	1
233T3241-11		1	1D	RF
		2	1A	RF
		4	3A	1
233T3241-12		1	1E	RF
		3	3C	1
233T3241-13		1	1F	RF
		3	3D	1

30-11-52

ILLUSTRATED PARTS LIST
01.1 Page 1025
Jul 01/03

PART NUMBER	AIRLINE PART NO.	FIG.	ITEM	TTL REQ
233T3241-1306		1	3H	RF
		3	1H	RF
233T3241-1307		1	3J	RF
		3	1J	RF
233T3241-1308		1	3K	RF
		4	1E	RF
233T3241-1309		1	3L	RF
		4	1F	RF
233T3241-1310		1	3M	RF
		3	1K	RF
233T3241-1311		1	3N	RF
		3	1L	RF
233T3241-1312		1	3P	RF
		1	3R	RF
		4	1G	RF
233T3241-1313		1	3Q	RF
		3	1M	RF
233T3241-1314		3	1N	RF
233T3241-1315		1	3S	RF
		4	1H	RF
233T3241-1316		1	3T	RF
		3	1P	RF
233T3241-1317		1	3U	RF
		3	1Q	RF
233T3241-1323		1	3V	RF
		3	1R	RF
233T3241-1324		1	3W	RF
		3	1S	RF
233T3241-1325		1	3X	RF
		3	1T	RF
233T3241-1326		1	3Y	RF
		3	1U	RF
233T3241-1327		1	3Z	RF
		3	1V	RF
233T3241-1328		1	4	RF
		4	1J	RF
233T3241-1329		1	4A	RF
		4	1K	RF
233T3241-1330		1	4B	RF
		4	1L	RF
233T3241-1331		1	4C	RF
		4	1M	RF
233T3241-1332		1	4D	RF
		3	1W	RF
233T3241-1333		1	4E	RF
		3	1X	RF

30-11-52

 ILLUSTRATED PARTS LIST
 01.1 Page 1026
 Jul 01/03

PART NUMBER	AIRLINE PART NO.	FIG.	ITEM	TTL REQ
233T3241-1334		1	4F	RF
		3	1Y	RF
233T3241-14		1	1G	RF
		2	1B	RF
		4	3B	1
233T3241-15		1	1H	RF
		3	3E	1
233T3241-17		1	1J	RF
233T3241-2		1	25	1
		3	25	1
233T3241-20		1	1K	RF
		3	3F	1
233T3241-22		1	1L	
233T3241-25		1	1M	
		2	1C	
233T3241-28		1	1N	
233T3241-3		1	95	1
		1	95B	1
		3	95	1
		3	95B	1
		3	95D	1
		3	95F	1
233T3241-41		1	1P	RF
		3	3G	1
233T3241-42		1	1Q	RF
		3	3H	1
233T3241-43		1	1R	RF
		3	3J	1
233T3241-44		1	1S	RF
		3	3K	1
233T3241-45		1	1T	RF
		2	1D	RF
		4	3C	1
233T3241-46		1	1U	RF
		2	1E	RF
		4	3D	1
233T3241-47		1	1V	RF
		2	1F	RF
		4	3E	1
233T3241-48		1	1W	RF
		3	3L	1
233T3241-49		1	1X	RF
		3	3M	1
233T3241-5		1	1A	RF
		2	1	RF
		4	3	1

30-11-52

PART NUMBER	AIRLINE PART NO.	FIG.	ITEM	TTL REQ
233T3241-50		1	1Y	RF
		3	3N	1
233T3241-6		2	30	1
		4	30	1
233T3241-7		2	100	1
		2	100A	1
		4	100	1
		4	100A	1
		4	100B	1
		4	100C	1
233T3241-8		1	1B	RF
		3	3A	1
233T3241-9		1	95A	1
		1	95C	1
		3	95A	1
		3	95C	1
		3	95E	1
		3	95G	1
233T6200-147		1	90B	1
		2	95A	1
		3	90B	1
		4	95B	1
		4	95C	1
233T6200-148		1	90C	1
		3	90C	1
233T6200-71		1	90	1
		2	95	1
		3	90	1
		4	95	1
		4	95A	1
		1	90A	1
233T6200-97		3	90A	1
		1	90A	1
293162		1	70	6
		2	75	6
		3	70	6
		4	75	6
3SAV1338A2		1	120	2
		2	120	2
		3	120	2
		3	120A	2
		4	120	2
		4	120A	2

30-11-52

 ILLUSTRATED PARTS LIST
 01.1 Page 1028
 Jul 01/03

PART NUMBER	AIRLINE PART NO.	FIG.	ITEM	TTL REQ	
34138		1	115	10	
		2	130	10	
		3	115	10	
		3	115A	10	
		4	130	10	
		4	130A	10	
433-673-1001-1012		1	5C	1	
		1	5D	1	
		1	5N	1	
		1	5Q	1	
		1	5V	1	
		1	5X	1	
		2	5C	1	
		2	5J	1	
		2	5K	1	
		2	5Q	1	
		3	5B	1	
		3	5G	1	
		3	5J	1	
		3	5P	1	
		4	5B	1	
		4	5F	1	
		4	5G	1	
		4	5M	1	
	433-673-1001-1027		1	10C	2
			1	10D	2
		1	10Q	2	
		1	10S	2	
		1	10X	2	
		1	11A	2	
		2	10C	2	
		2	10K	2	
		2	10L	2	
		2	10R	2	
		3	10B	2	
		3	10G	2	
		3	10J	2	
		3	11A	2	
		4	10B	2	
		4	10F	2	
	4	10G	2		
	4	10M	0		

30-11-52

ILLUSTRATED PARTS LIST
01.1 Page 1029
Jul 01/03

PART NUMBER	AIRLINE PART NO.	FIG.	ITEM	TTL REQ	
433-673-1004-4012		1	5F	1	
		1	5G	1	
		1	5L	1	
		1	5P	1	
		1	5R	1	
		1	5W	1	
		1	5Y	1	
		2	5G	1	
		2	5L	1	
		2	5R	1	
		3	5C	1	
		3	5E	1	
		3	5H	1	
		3	5K	1	
		3	5Q	1	
		4	5D	1	
		4	5H	1	
		4	5N	1	
	433-673-1004-4027		1	10J	2
			1	10K	2
		1	10N	2	
		1	10R	2	
		1	10T	2	
		1	10Y	2	
		1	11B	2	
		2	10H	2	
		2	10M	2	
		2	10S	2	
		3	10C	2	
		3	10E	2	
		3	10H	2	
		3	10K	2	
		3	11B	2	
434-674-1005-1115			4	10D	2
		4	10H	2	
		4	10N	2	
		1	20	2	
		1	20B	2	
		2	20	2	
		2	20B	2	
		3	20	2	
		3	20B	2	
		4	20	2	
	4	20B	2		

30-11-52

 ILLUSTRATED PARTS LIST
 01.1 Page 1030
 Jul 01/03

PART NUMBER	AIRLINE PART NO.	FIG.	ITEM	TTL REQ
434-674-1005-1280		2	25A	1
		2	25C	1
		4	25	1
		4	25B	1
434-674-1031-2115		1	20A	2
		2	20A	2
		3	20A	2
		4	20A	2
434-674-1031-2280		2	25B	1
		4	25A	1
451120-026		1	125	2
		2	125	2
		3	125	2
		3	125A	2
		4	125	2
		4	125A	2
48-10R12-12P8-300		1	80	1
		2	85	1
		3	80	1
		4	85	1
48-10R14-15P300		1	75	1
		2	80	1
		3	75	1
		4	80	1
48-10R14-15P7-300		1	85	1
		2	90	1
		3	85	1
		4	90	1
48-10R16-24P8-300		1	85A	1
		3	85A	1
48-2335-02		1	105	10
		2	110	10
		3	105	10
		3	105A	10
		4	110	10
		4	110A	10
69B46200-11		1	60	3
		2	65	3
		3	60	3
		4	65	3
800-001043		3	2	1
800-001242		4	2A	1
800-003403		4	2	1
800000121-1		1	15	1
		2	15	1
		3	15	1
		4	15	1

30-11-52

ILLUSTRATED PARTS LIST
01.1 Page 1031
Jul 01/03

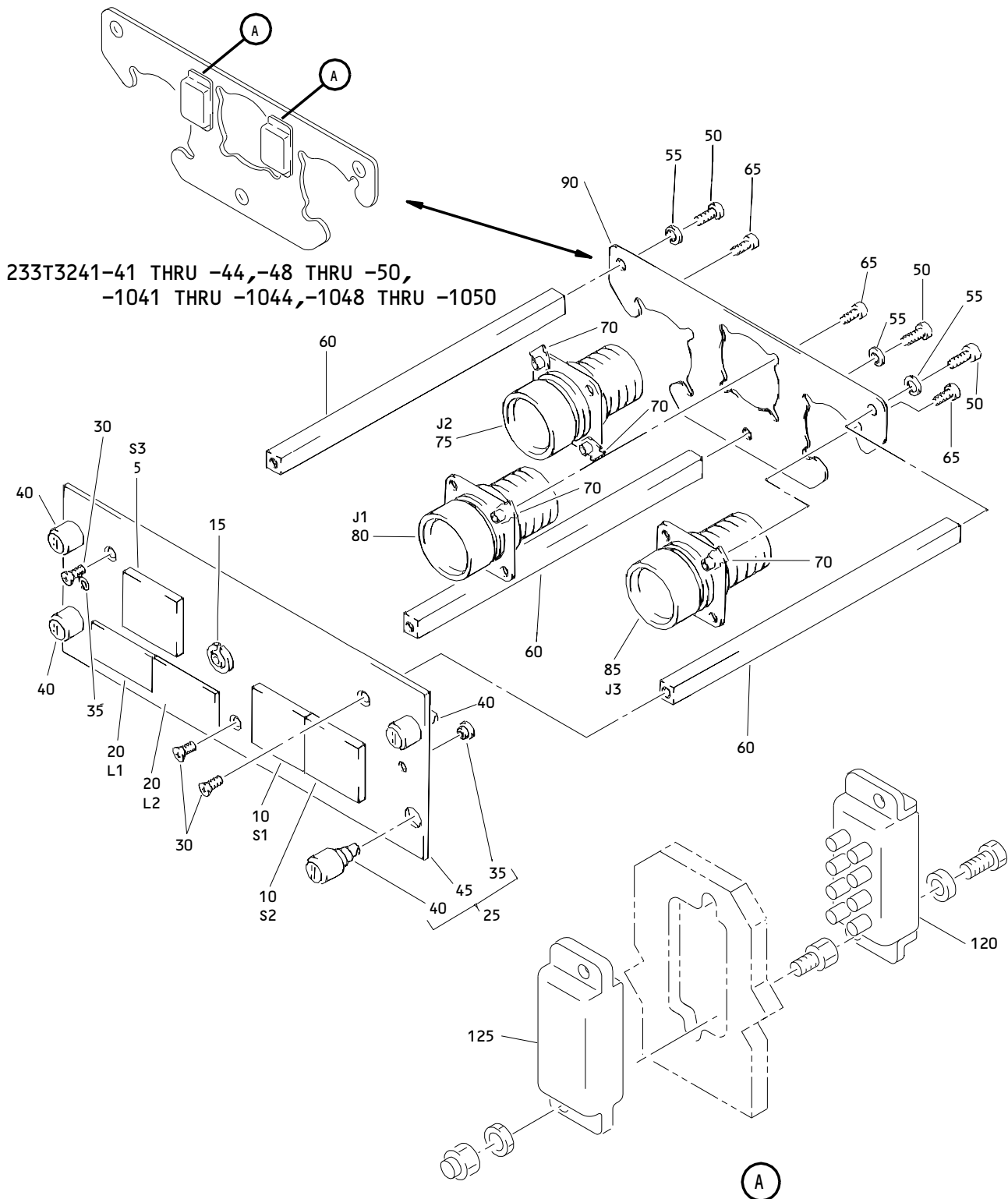
PART NUMBER	AIRLINE PART NO.	FIG.	ITEM	TTL REQ
851-30768-1012		1	5A	
		2	5A	
851-30768-1027		1	10A	
		2	10A	
851-30768-2012		1	5	1
		1	5M	1
		1	5T	1
		1	5Z	1
		2	5	1
		2	5H	1
		2	5N	1
		2	5S	1
		3	5	1
		3	5F	1
		3	5M	1
		3	5R	1
		4	5	1
		4	5E	1
		4	5K	1
		4	5P	1
851-30768-2027		1	10	2
		1	10P	2
		1	10V	2
		1	11C	2
		2	10	2
		2	10J	2
		2	10P	2
		2	10T	2
		3	10	2
		3	10F	2
		3	10M	2
		3	11C	2
		4	10	2
		4	10E	2
851-30768-3012		4	10K	
		4	10P	
		1	5B	1
		1	5S	1
		2	5B	1
		3	5A	1
		3	5L	1
		4	5A	1

30-11-52

 ILLUSTRATED PARTS LIST
 01.1 Page 1032
 Jul 01/03

PART NUMBER	AIRLINE PART NO.	FIG.	ITEM	TTL REQ
851-30768-3027		1	10B	2
		1	10U	2
		2	10B	2
		2	10N	2
		3	10A	2
		3	10L	2
		4	10A	2
		4	10J	2

30-11-52



Wing and Engine Anti-Ice Control Panel Assembly, M10397
 Figure 1

30-11-52

ILLUSTRATED PARTS LIST
 01.101 Page 1034
 Jul 01/03

FIG. & ITEM	PART NO.	AIRLINE PART NUMBER	NOMENCLATURE 1234567	EFF CODE	QTY PER ASSY
01- -1	233T3241-1		PANEL ASSY-M10397 WING AND ENG ANTI ICE CONT (PRE CSB 233T3241-30-01) (PRE CSB 233T3241-30-02) (PRE CSB 233T3241-30-03) (POST CSB P/N IN 30-11-72)	A	RF
-1A	233T3241-5		PANEL ASSY-M10397 WING AND ENG ANTI ICE CONT (FOR DETAILS SEE FIG. 2) (PRE CSB 233T3241-30-01) (PRE CSB 233T3241-30-02) (PRE CSB 233T3241-30-03) (POST CSB P/N IN 30-11-72)	B	RF
-1B	233T3241-8		PANEL ASSY-M10397 WING AND ENG ANTI ICE CONT (PRE CSB 233T3241-30-01) (PRE CSB 233T3241-30-03)	C	RF
-1C	233T3241-10		PANEL ASSY-M10397 WING AND ENG ANTI ICE CONT (PRE CSB 233T3241-30-01) (PRE CSB 233T3241-30-03)	D	RF
-1D	233T3241-11		PANEL ASSY-M10397 WING AND ENG ANTI ICE CONT (PRE CSB 233T3241-30-01) (PRE CSB 233T3241-30-02) (PRE CSB 233T3241-30-03) (POST CSB P/N IN 30-11-72) (FOR DETAILS SEE FIG. 2)	E	RF
-1E	233T3241-12		PANEL ASSY-M10397 WING AND ENG ANTI ICE CONT (PRE CSB 233T3241-30-01) (PRE CSB 233T3241-30-03)	F	RF
-1F	233T3241-13		PANEL ASSY-M10397 WING AND ENG ANTI ICE CONT (PRE CSB 233T3241-30-01) (PRE CSB 233T3241-30-03)	G	RF
-1G	233T3241-14		PANEL ASSY-M10397 WING AND ENG ANTI ICE CONT (PRE CSB 233T3241-30-01) (PRE CSB 233T3241-30-03) (FOR DETAILS SEE FIG. 2)	H	RF

30-11-52

ILLUSTRATED PARTS LIST
01.101 Page 1035
Jul 01/03

FIG. & ITEM	PART NO.	AIRLINE PART NUMBER	NOMENCLATURE 1234567	EFF CODE	QTY PER ASSY
01- -1H	233T3241-15		PANEL ASSY-M10397 WING AND ENG ANTI ICE CONT (PRE CSB 233T3241-30-01) (PRE CSB 233T3241-30-03)	J	RF
-1J	233T3241-17		PANEL ASSY-M10397 WING AND ENG ANTI ICE CONT (PRE CSB 233T3241-30-02) (PRE CSB 233T3241-30-03) (POST CSB P/N IN 30-11-72)	K	RF
-1K	233T3241-20		PANEL ASSY-M10397 WING AND ENG ANTI ICE CONT (PRE CSB 233T3241-30-01) (PRE CSB 233T3241-30-03)	L	RF
-1L	233T3241-22		DELETED		
-1M	233T3241-25		DELETED		
-1N	233T3241-28		DELETED		
R -1P	233T3241-41		PANEL ASSY-M10397 WING AND ENG ANTI-ICE CONT (PRE CSB 233T3241-30-03) (POST CSB 233T3241-30-01)	M	RF
R -1Q	233T3241-42		PANEL ASSY-M10397 WING AND ENG ANTI-ICE CONT (PRE CSB 233T3241-30-03) (POST CSB 233T3241-30-01)	N	RF
R -1R	233T3241-43		PANEL ASSY-M10397 WING AND ENG ANTI-ICE CONT (PRE CSB 233T3241-30-03) (POST CSB 233T3241-30-01)	P	RF
R -1S	233T3241-44		PANEL ASSY-M10397 WING AND ENG ANTI-ICE CONT (PRE CSB 233T3241-30-03) (POST CSB 233T3241-30-01)	Q	RF
R -1T	233T3241-45		PANEL ASSY-M10397 WING AND ENG ANTI-ICE CONT (PRE CSB 233T3241-30-03) (POST CSB 233T3241-30-01) (FOR DETAILS SEE FIG. 2)	R	RF

30-11-52

 ILLUSTRATED PARTS LIST
 01.101 Page 1036
 Jul 01/03

FIG. & ITEM	PART NO.	AIRLINE PART NUMBER	NOMENCLATURE 1234567	EFF CODE	QTY PER ASSY
R 01- -1U	233T3241-46		PANEL ASSY-M10397 WING AND ENG ANTI-ICE CONT (PRE CSB 233T3241-30-03) (POST CSB 233T3241-30-01) (FOR DETAILS SEE FIG. 2)	S	RF
R -1V	233T3241-47		PANEL ASSY-M10397 WING AND ENG ANTI-ICE CONT (PRE CSB 233T3241-30-03) (POST CSB 233T3241-30-01) (FOR DETAILS SEE FIG.2)	T	RF
R -1W	233T3241-48		PANEL ASSY-M10397 WING AND ENG ANTI-ICE CONT (PRE CSB 233T3241-30-03) (POST CSB 233T3241-30-01)	U	RF
R -1X	233T3241-49		PANEL ASSY-M10397 WING AND ENG ANT-ICE CONT (PRE CSB 233T3241-30-03) (POST CSB 233T3241-30-01)	V	RF
R -1Y	233T3241-50		PANEL ASSY-M10397 WING AND ENG ANTI-ICE CONT (PRE CSB 233T3241-30-03) (POST CSB 233T3241-30-01)	W	RF
-2	233T3241-1001		PANEL ASSY-M10397 WING AND ENG ANTI-ICE CONT (POST CSB 233T3241-30-03)	X	RF
-2A	233T3241-1005		PANEL ASSY-M10397 WING AND ENG ANTI-ICE CONT (POST CSB 233T3241-30-03) (FOR DETAILS SEE FIG. 2)	Y	RF

30-11-52

FIG. & ITEM	PART NO.	AIRLINE PART NUMBER	NOMENCLATURE 1234567	EFF CODE	QTY PER ASSY
01- -2B	233T3241-1008		PANEL ASSY-M10397 WING AND ENG ANTI-ICE CONT (POST CSB 233T3241-30-03)	Z	RF
-2C	233T3241-1010		PANEL ASSY-M10397 WING AND ENG ANTI-ICE CONT (POST CSB 233T3241-30-03)	AA	RF
-2D	233T3241-1011		PANEL ASSY-M10397 WING AND ENG ANTI-ICE CONT (POST CSB 233T3241-30-03) (FOR DETAILS SEE FIG. 2)	BA	RF
-2E	233T3241-1012		PANEL ASSY-M10397 WING AND ENG ANTI-ICE CONT (POST CSB 233T3241-30-03)	CA	RF
-2F	233T3241-1013		PANEL ASSY-M10397 WING AND ENG ANTI-ICE CONT (POST CSB 233T3241-30-03)	DA	RF
-2G	233T3241-1014		PANEL ASSY-M10397 WING AND ENG ANTI-ICE CONT (POST CSB 233T3241-30-03) (FOR DETAILS SEE FIG. 2)	EA	RF
-2H	233T3241-1015		PANEL ASSY-M10397 WING AND ENG ANTI-ICE CONT (POST CSB 233T3241-30-03)	FA	RF
-2J	233T3241-1017		PANEL ASSY-M10397 WING AND ENG ANTI-ICE CONT (POST CSB 233T3241-30-03)	GA	RF
-2K	233T3241-1020		PANEL ASSY-M10397 WING AND ENG ANTI-ICE CONT (POST CSB 233T3241-30-03)	HA	RF
-2L	233T3241-1041		PANEL ASSY-M10397 WING AND ENG ANTI-ICE CONT (POST CSB 233T3241-30-03)	IA	RF
-2M	233T3241-1042		PANEL ASSY-M10397 WING AND ENG ANTI-ICE CONT (POST CSB 233T3241-30-03)	JA	RF
-2N	233T3241-1043		PANEL ASSY-M10397 WING AND ENG ANTI-ICE CONT (POST CSB 233T3241-30-03)	KA	RF
-2P	233T3241-1044		PANEL ASSY-M10397 WING AND ENG ANTI-ICE CONT (POST CSB 233T3241-30-03)	LA	RF
-2Q	233T3241-1045		PANEL ASSY-M10397 WING AND ENG ANTI-ICE CONT (POST CSB 233T3241-30-03) (FOR DETAILS SEE FIG. 2)	MA	RF

30-11-52

 ILLUSTRATED PARTS LIST
 01.101 Page 1038
 Jul 01/03

FIG. & ITEM	PART NO.	AIRLINE PART NUMBER	NOMENCLATURE 1234567	EFF CODE	QTY PER ASSY
01- -2R	233T3241-1046		PANEL ASSY-M10397 WING AND ENG ANTI-ICE CONT (POST CSB 233T3241-30-03) (FOR DETAILS SEE FIG. 2)	NA	RF
-2S	233T3241-1047		PANEL ASSY-M10397 WING AND ENG ANTI-ICE CONT (POST CSB 233T3241-30-03) (FOR DETAILS SEE FIG. 2)	PA	RF
-2T	233T3241-1048		PANEL ASSY-M10397 WING AND ENG ANTI-ICE CONT (POST CSB 233T3241-30-03)	QA	RF
-2U	233T3241-1049		PANEL ASSY-M10397 WING AND ENG ANTI-ICE CONT (POST CSB 233T3241-30-03)	RA	RF
-2V	233T3241-1050		PANEL ASSY-M10397 WING AND ENG ANTI-ICE CONT (POST CSB 233T3241-30-03)	SA	RF
-2W	233T3100-65		PANEL ASSY-M10397 WING AND ENG ANTI-ICE CONT (PRE CSB 233T3241-30-03 R1) (FOR DETAILS SEE FIG. 3)	TA	RF
-2X	233T3100-91		PANEL ASSY-M10397 WING AND ENG ANTI-ICE CONT (PRE CSB 233T3241-30-03) R1) (FOR DETAILS SEE FIG. 4)	UA	RF
-2Y	233T3100-135		PANEL ASSY-M10397 WING AND ENG ANTI-ICE CONT (PRE CSB 233T3241-30-03 R1) (FOR DETAILS SEE FIG. 3)	VA	RF

30-11-52

FIG. & ITEM	PART NO.	AIRLINE PART NUMBER	NOMENCLATURE 1234567	EFF CODE	QTY PER ASSY
01- -2Z	233T3100-136		PANEL ASSY-M10397 WING AND ENG ANTI-ICE CONT (PRE CSB 233T3241-30-03) R1 (FOR DETAILS SEE FIG. 4)	WA	RF
-3	233T3100-160		PANEL ASSY-M10397 WING AND ENG ANTI-ICE CONT (PRE CSB 233T3241-30-03) R1 (FOR DETAILS SEE FIG. 3)	XA	RF
-3A	233T3100-178		PANEL ASSY-M10397 WING AND ENG ANTI-ICE CONT (PRE CSB 233T3241-30-03) R1 (FOR DETAILS SEE FIG. 3)	YA	RF
-3B	233T3100-179		PANEL ASSY-M10397 WING AND ENG ANTI-ICE CONT (PRE CSB 233T3241-30-03) R1 (FOR DETAILS SEE FIG. 4)	ZA	RF
-3C	233T3100-180		PANEL ASSY-M10397 WING AND ENG ANTI-ICE CONT (PRE CSB 233T3241-30-03) R1 (FOR DETAILS SEE FIG. 3)	BB	RF
-3D	233T3100-248		PANEL ASSY-M10397 WING AND ENG ANTI-ICE CONT (PRE CSB 233T3241-30-03) R1 (FOR DETAILS SEE FIG. 3)	CB	RF
-3E	233T3100-249		PANEL ASSY-M10397 WING AND ENG ANTI-ICE CONT (PRE CSB 233T3241-30-03) R1 (FOR DETAILS SEE FIG. 4)	DB	RF
-3F	233T3100-250		PANEL ASSY-M10397 WING AND ENG ANTI-ICE CONT (PRE CSB 233T3241-30-03) R1 (FOR DETAILS SEE FIG. 3)	EB	RF

30-11-52

 ILLUSTRATED PARTS LIST
 01.1 Page 1040
 Jul 01/03

FIG. & ITEM	PART NO.	AIRLINE PART NUMBER	NOMENCLATURE 1234567	EFF CODE	QTY PER ASSY
01- -3G	233T3100-292		PANEL ASSY-M10397 WING AND ENG ANTI-ICE CONT (PRE CSB 233T3241-30-03) R1) (FOR DETAILS SEE FIG. 3)	FB	RF
-3H	233T3241-1306		PANEL ASSY-M10397 WING AND ENG ANTI-ICE CONT (POST CSB 233T3241-30-03 R1) (FOR DETAILS SEE FIG. 3)	GB	RF
-3J	233T3241-1307		PANEL ASSY-M10397 WING AND ENG ANTI-ICE CONT (POST CSB 233T3241-30-03 R1) (FOR DETAILS SEE FIG. 3)	HB	RF
-3K	233T3241-1308		PANEL ASSY-M10397 WING AND ENG ANTI-ICE CONT (POST CSB 233T3241-30-03 R1) (FOR DETAILS SEE FIG. 4)	JB	RF
-3L	233T3241-1309		PANEL ASSY-M10397 WING AND ENG ANTI-ICE CONT (POST CSB 233T3241-30-03 R1) (FOR DETAILS SEE FIG. 4)	KB	RF
-3M	233T3241-1310		PANEL ASSY-M10397 WING AND ENG ANTI-ICE CONT (POST CSB 233T3241-30-03 R1) (FOR DETAILS SEE FIG. 3)	LB	RF
-3N	233T3241-1311		PANEL ASSY-M10397 WING AND ENG ANTI-ICE CONT (POST CSB 233T3241-30-03 R1) (FOR DETAILS SEE FIG. 3)	MB	RF
-3P	233T3241-1312		PANEL ASSY-M10397 WING AND ENG ANTI-ICE CONT (POST CSB 233T3241-30-03 R1) (FOR DETAILS SEE FIG. 4)	NB	RF

30-11-52

FIG. & ITEM	PART NO.	AIRLINE PART NUMBER	NOMENCLATURE 1234567	EFF CODE	QTY PER ASSY
01- -3Q	233T3241-1313		PANEL ASSY-M10397 WING AND ENG ANTI-ICE CONT (POST CSB 233T3241-30-03 R1) (FOR DETAILS SEE FIG. 3)	PB	RF
-3R	233T3241-1314		PANEL ASSY-M10397 WING AND ENG ANTI-ICE CONT (POST CSB 233T3241-30-03 R1) (FOR DETAILS SEE FIG. 3)	QB	RF
-3S	233T3241-1315		PANEL ASSY-M10397 WING AND ENG ANTI-ICE CONT (POST CSB 233T3241-30-03 R1) (FOR DETAILS SEE FIG. 4)	RB	RF
-3T	233T3241-1316		PANEL ASSY-M10397 WING AND ENG ANTI-ICE CONT (POST CSB 233T3241-30-03 R1) (FOR DETAILS SEE FIG. 3)	SB	RF
-3U	233T3241-1317		PANEL ASSY-M10397 WING AND ENG ANTI-ICE CONT (POST CSB 233T3241-30-03 R1) (FOR DETAILS SEE FIG. 3)	TB	RF
-3V	233T3241-1323		PANEL ASSY-M10397 WING AND ENG ANTI-ICE CONT (POST CSB 233T3241-30-03 R1) (FOR DETAILS SEE FIG. 3)	UB	RF
-3W	233T3241-1324		PANEL ASSY-M10397 WING AND ENG ANTI-ICE CONT (POST CSB 233T3241-30-03 R1) (FOR DETAILS SEE FIG. 3)	VB	RF
-3X	233T3241-1325		PANEL ASSY-M10397 WING AND ENG ANTI-ICE CONT (POST CSB 233T3241-30-03 R1) (FOR DETAILS SEE FIG. 3)	WB	RF

30-11-52

 ILLUSTRATED PARTS LIST
 01.1 Page 1042
 Jul 01/03

FIG. & ITEM	PART NO.	AIRLINE PART NUMBER	NOMENCLATURE 1234567	EFF CODE	QTY PER ASSY
01-3Y	233T3241-1326		PANEL ASSY-M10397 WING AND ENG ANTI-ICE CONT (POST CSB 233T3241-30-03 R1) (FOR DETAILS SEE FIG. 3)	XB	RF
-3Z	233T3241-1327		PANEL ASSY-M10397 WING AND ENG ANTI-ICE CONT (POST CSB 233T3241-30-03 R1) (FOR DETAILS SEE FIG. 3)	YB	RF
-4	233T3241-1328		PANEL ASSY-M10397 WING AND ENG ANTI-ICE CONT (POST CSB 233T3241-30-03 R1) (FOR DETAILS SEE FIG. 4)	ZB	RF
-4A	233T3241-1329		PANEL ASSY-M10397 WING AND ENG ANTI-ICE CONT (POST CSB 233T3241-30-03 R1) (FOR DETAILS SEE FIG. 4)	CC	RF
-4B	233T3241-1330		PANEL ASSY-M10397 WING AND ENG ANTI-ICE CONT (POST CSB 233T3241-30-03 R1) (FOR DETAILS SEE FIG. 4)	DC	RF
-4C	233T3241-1331		PANEL ASSY-M10397 WING AND ENG ANTI-ICE CONT (POST CSB 233T3241-30-03 R1) (FOR DETAILS SEE FIG. 4)	EC	RF
-4D	233T3241-1332		PANEL ASSY-M10397 WING AND ENG ANTI-ICE CONT (POST CSB 233T3241-30-03 R1) (FOR DETAILS SEE FIG. 3)	FC	RF
-4E	233T3241-1333		PANEL ASSY-M10397 WING AND ENG ANTI-ICE CONT (POST CSB 233T3241-30-03 R1) (FOR DETAILS SEE FIG. 3)	GC	RF
-4F	233T3241-1334		PANEL ASSY-M10397 WING AND ENG ANTI-ICE CONT (POST CSB 233T3241-30-03 R1) (FOR DETAILS SEE FIG. 3)	HC	RF

30-11-52

ILLUSTRATED PARTS LIST
01.1 Page 1043
Jul 01/03

FIG. & ITEM	PART NO.	AIRLINE PART NUMBER	NOMENCLATURE 1234567	EFF CODE	QTY PER ASSY
01-5	851-30768-2012		.SWITCH-LIGHTED PUSHBUTTON IND (ON) (V96182) (S3) (SPEC S231T290-2012)	A,C	1
-5A	851-30768-1012		DELETED		
-5B	851-30768-3012		.SWITCH-LIGHTED PUSHBUTTON IND (ON) (V96182) (S3) (SPEC S231T290-3012) (OPT ITEM 5C)	D,F,G ,J	1
-5C	BCREF7604		.SWITCH-LIGHTED PUSHBUTTON IND (ON) (V81590) (433-673-1001-1012) (S3) (SPEC S231T290-1012) (OPT ITEM 5B)	D,F,G ,J	1
-5D	BCREF7604		.SWITCH-LIGHTED PUSHBUTTON IND (ON) (V81590) (433-673-1001-1012) (S3) (SPEC S231T290-1012) (OPT ITEM 5F)	K	1
-5E	S231T290-4012		DELETED		
-5F	BCREFA0503		.SWITCH-LIGHTED PUSHBUTTON IND (V81590) (433-673-1004-4012) (S3) (SPEC S231T290-4012) (OPT ITEM 5D)	K	1

30-11-52

 ILLUSTRATED PARTS LIST
 01.101 Page 1044
 Jul 01/03

FIG. & ITEM	PART NO.	AIRLINE PART NUMBER	NOMENCLATURE 1234567	EFF CODE	QTY PER ASSY
01- -5G	BCREFA0503		.SWITCH-LIGHTED PUSHBUTTON IND (V81590) (433-673-1004-4012) (S3) (SPEC S231T290-4012)	L,Q	1
-5H	BCREFA0503		DELETED		
-5J	S231T290-5012		DELETED		
R -5K	S231T290-5012		.SWITCH-LIGHTED PUSHBUTTON IND (S3) (OPT ITEMS 5L,5M,5N WITH GREEN DOT IDENTIFIER ON CAP ASSY)	M-P, U-W	1
R -5L	BCREFA0503		.SWITCH-LIGHTED PUSHBUTTON IND (V81590) (433-673-1004-4012) (S3) (SPEC S231T290-4012) (OPT ITEMS 5K,5M,5N WITH GREEN DOT IDENTIFIER ON CAP ASSY)	M-P, U-W	1
R -5M	851-30768-2012		.SWITCH-LIGHTED PUSHBUTTON IND (V96182) (S3) (SPEC S231T290-2012) (OPT ITEMS 5K,5L,5M WITH GREEN DOT IDENTIFIER ON CAP ASSY)	M-P, U-W	1

30-11-52

ILLUSTRATED PARTS LIST
01.101 Page 1045
Jul 01/03

FIG. & ITEM	PART NO.	AIRLINE PART NUMBER	NOMENCLATURE 1234567	EFF CODE	QTY PER ASSY
R 01- -5N	BCREF7604		.SWITCH-LIGHTED PUSHBUTTON IND (V81590) (433-673-1001-1012) (S3) (SPEC S231T290-1012) (OPT ITEMS 5L,5K,5M WITH GREEN DOT IDENTIFIER ON CAP ASSY)	M-P, U-W	1
-5P	BCREFA0503		.SWITCH-LIGHTED PUSHBUTTON IND (V81590) (433-673-1004-4012) (S3) (SPEC S231T290-4012) (USE WITH CONFIG "D" MASTER MODULE. SEE REPAIR FOR ADDITIONAL INFORMATION)	HA,LA	1
-5Q	BCREF7604		.SWITCH-LIGHTED PUSHBUTTON IND (V81590) (433-673-1001-1012) (S3) (SPEC S231T290-1012) (USE WITH CONFIG "D" MASTER MODULE. SEE REPAIR FOR ADDITIONAL INFORMATION) (OPT ITEMS 5R,5S,5T,5U)	X,Z, AA,CA DA,FA	1

30-11-52

 ILLUSTRATED PARTS LIST
 01.101 Page 1046
 Jul 01/03

FIG. & ITEM	PART NO.	AIRLINE PART NUMBER	NOMENCLATURE 1234567	EFF CODE	QTY PER ASSY
01- -5R	BCREFA0503		.SWITCH-LIGHTED PUSHBUTTON IND (V81590) (433-673-1004-4012) (S3) (SPEC S231T290-4012) (USE WITH CONFIG "D" MASTER MODULE. SEE REPAIR FOR ADDITIONAL INFORMATION) (OPT ITEMS 5Q,5S,5T,5U)	X,Z, AA,CA DA,FA	1
-5S	851-30768-3012		.SWITCH-LIGHTED PUSHBUTTON IND (V96182) (S3) (SPEC S231T290-3012) (OPT ITEMS 5Q,5R,5T,5U)	X,Z, AA,CA DA,FA	1
-5T	851-30768-2012		.SWITCH-LIGHTED PUSHBUTTON IND (V96182) (S3) (SPEC S231T290-2012) (OPT ITEMS 5Q,5R,5S,5U)	X,Z, AA,CA DA,FA	1
-5U	S231T290-5012		.SWITCH-LIGHTED PUSHBUTTON IND (S3) (OPT ITEMS 5Q,5R,5S,5T)	X,Z, AA,CA DA,FA	1
-5V	BCREF7604		.SWITCH-LIGHTED PUSHBUTTON IND (V81590) (433-673-1001-1012) (S3) (SPEC S231T290-1012) (USE WITH CONFIG "D" MASTER MODULE. SEE REPAIR FOR ADDITIONAL INFORMATION) (OPT ITEM 5W)	GA	1

30-11-52

FIG. & ITEM	PART NO.	AIRLINE PART NUMBER	NOMENCLATURE 1234567	EFF CODE	QTY PER ASSY
01- -5W	BCREFA0503		.SWITCH-LIGHTED PUSHBUTTON IND (V81590) (433-673-1004-4012) (S3) (SPEC S231T290-4012) (USE WITH CONFIG "D" MASTER MODULE. SEE REPAIR FOR ADDITIONAL INFORMATION) (OPT ITEM 5V)	GA	1
-5X	BCREF7604		.SWITCH-LIGHTED PUSHBUTTON IND (V81590) (433-673-1001-1012) (S3) (SPEC S231T290-1012) (USE WITH CONFIG "D" MASTER MODULE. SEE REPAIR FOR ADDITIONAL INFORMATION) (OPT ITEMS 5Y,5Z,6A)	IA-KA QA-SA	1
-5Y	BCREFA0503		.SWITCH-LIGHTED PUSHBUTTON IND (V81590) (433-673-1004-4012) (S3) (SPEC S231T290-4012) (USE WITH CONFIG "D" MASTER MODULE. SEE REPAIR FOR ADDITIONAL INFORMATION) (OPT ITEMS 5X,5Z,6A)	IA-KA QA-SA	1

30-11-52

 ILLUSTRATED PARTS LIST
 01.101 Page 1048
 Jul 01/03

FIG. & ITEM	PART NO.	AIRLINE PART NUMBER	NOMENCLATURE 1234567	EFF CODE	QTY PER ASSY
01- -5Z	851-30768-2012		.SWITCH-LIGHTED PUSHBUTTON IND (V81590) (S3) (SPEC S231T290-2012) (OPT ITEMS 5X,5Y,6A)	IA-KA QA-SA	1
-6A	S231T290-5012		.SWITCH-LIGHTED PUSHBUTTON IND (S3) (OPT ITEMS 5X,5Y,5Z)	IA-KA QA-SA	1
10	851-30768-2027		.SWITCH-LIGHTED PUSHBUTTON IND (ON/VALVE) (V96182) (S1,S2) (SPEC S231T290-2027)	A,C	2
-10A	851-30768-1027		DELETED		
-10B	851-30768-3027		.SWITCH-LIGHTED PUSHBUTTON IND (ON/VALVE) (V96182) (S1,S2) (SPEC S231T290-3027) (OPT ITEM 10C)	D,F,G ,J	2
-10C	BCREF7613		.SWITCH-LIGHTED PUSHBUTTON IND (ON/VALVE) (V81590) (433-673-1001-1027) (S1,S2) (SPEC S231T290-1027) (OPT ITEM 10B)	D,F,G ,J	2

30-11-52

ILLUSTRATED PARTS LIST
01.101 Page 1049
Jul 01/03

FIG. & ITEM	PART NO.	AIRLINE PART NUMBER	NOMENCLATURE 1234567	EFF CODE	QTY PER ASSY
01- -10D	BCREF7613		.SWITCH-LIGHTED PUSHBUTTON IND (ON/VALVE) (V81590) (433-673-1001-1027) (S1,S2) (SPEC S231T290-1027) (OPT ITEM 10J)	K	2
-10E	S231T290-4027		DELETED		
-10F	S231T290-4027		DELETED		
-10G	S231T290-4027		DELETED		
-10H	S231T290-5027		DELETED		
-10J	BCREFA0512		.SWITCH-LIGHTED PUSHBUTTON IND (V81590) (433-673-1004-4027) (S1,S2) (SPEC S231T290-4027) (OPT ITEM 10D)	K	2
-10K	BCREFA0512		.SWITCH-LIGHTED PUSHBUTTON IND (V81590) (433-673-1004-4027) (S1, S2) (SPEC S231T290-4027)	L,Q	2
-10L	BCREFA0512		DELETED		
R -10M	S231T290-5027		.SWITCH-LIGHTED PUSHBUTTON IND (S1, S2) (OPT ITEMS 10N,10P,10Q WITH GREEN DOT IDENTIFIER ON CAP ASSY)	M-P, U-W	2
R -10N	BCREFA0512		.SWITCH-LIGHTED PUSHBUTTON IND (V81590) (433-673-1004-4027) (S1, S2) (SPEC S231T290-4027) (OPT ITEMS 10M,10P,10Q WITH GREEN DOT IDENTIFIER ON CAP ASSY)	M-P, U-W	2

30-11-52

 ILLUSTRATED PARTS LIST
 01.101 Page 1050
 Jul 01/03

 **BOEING**
COMPONENT
MAINTENANCE MANUAL

FIG. & ITEM	PART NO.	AIRLINE PART NUMBER	NOMENCLATURE 1234567	EFF CODE	QTY PER ASSY
R 01- -10P	851-30768-2027		.SWITCH-LIGHTED PUSH BUTTON IND (V96182) (S1, S2) (SPEC S231T290-2027) (OPT ITEMS 10M,10N,10Q WITH GREEN DOT IDENTI- FIER ON CAP ASSY)	M-P, U-W	2
R -10Q	BCREF7613		.SWITCH-LIGHTED PUSHBUTTON IND (V81590) (433-673-1001-1027) (S1, S2) (SPEC S231T290-1027) (OPT ITEMS 10M,10N,10P WITH GREEN DOT IDENTI- FIER ON CAP ASSY)	M-P, U-W	2
-10R	BCREFA0512		.SWITCH-LIGHTED PUSHBUTTON IND (V81590) (433-673-1004-4027) (S1,S2) (SPEC S231T290-4027) (USE WITH CONFIG "D" MASTER MODULE. SEE REPAIR FOR ADDITIONAL INFORMATION)	HA,LA	2
-10S	BCREF7613		.SWITCH-LIGHTED PUSHBUTTON IND (V81590) (433-673-1001-1027) (S1,S2) (SPEC S231T290-1027) (USE WITH CONFIG "D" MASTER MODULE. SEE REPAIR FOR ADDITIONAL INFORMATION) (OPT ITEMS 10T,10U,10V, 10W)	X,Z, AA,CA DA,FA	2

30-11-52

ILLUSTRATED PARTS LIST
01.101 Page 1051
Jul 01/03

FIG. & ITEM	PART NO.	AIRLINE PART NUMBER	NOMENCLATURE 1234567	EFF CODE	QTY PER ASSY
01- -10T	BCREFA0512		.SWITCH-LIGHTED PUSHBUTTON IND (V81590) (433-673-1004-4027) (S1,S2) (SPEC S231T290-4047) (USE WITH CONFIG "D" MASTER MODULE. SEE REPAIR FOR ADDITIONAL INFORMATION) (OPT ITEMS 10S,10U,10V, 10W)	X,Z, AA,CA DA,FA	2
-10U	851-30768-3027		.SWITCH-LIGHTED PUSHBUTTON IND (V96182) (S1,S2) (SPEC S231T290-3027) (OPT ITEMS 10R,10T,10V, 10W)	X,Z, AA,CA DA,FA	2
-10V	851-30768-2027		.SWITCH-LIGHTED PUSHBUTTON IND (V96182) (S1,S2) (SPEC S231T290-2027) (OPT ITEMS 10R,10T,10U, 10W)	X,Z, AA,CA DA,FA	2
-10W	S231T290-5027		.SWITCH-LIGHTED PUSHBUTTON IND (S1,S2) (OPT ITEMS 10R,10T,10U, 10V)	X,Z, AA,CA DA,FA	2
-10X	BCREF7613		.SWITCH-LIGHTED PUSHBUTTON IND (V81590) (433-673-1001-1027) (S1,S2) (SPEC S231T290-1027) (USE WITH CONFIG "D" MASTER MODULE. SEE REPAIR FOR ADDITIONAL INFORMATION) (OPT ITEM 10Y)	GA	2

30-11-52

 ILLUSTRATED PARTS LIST
 01.101 Page 1052
 Jul 01/03

 **BOEING**
COMPONENT
MAINTENANCE MANUAL

FIG. & ITEM	PART NO.	AIRLINE PART NUMBER	NOMENCLATURE 1234567	EFF CODE	QTY PER ASSY
01- -10Y	BCREFA0512		.SWITCH-LIGHTED PUSHBUTTON IND (V81590) (433-673-1004-4027) (S1,S2) (SPEC S231T290-4027) (USE WITH CONFIG "D" MASTER MODULE. SEE REPAIR FOR ADDITIONAL INFORMATION) (OPT ITEM 10X)	GA	2
-11A	BCREF7613		.SWITCH-LIGHTED PUSHBUTTON IND (V81590) (433-673-1001-1027) (S1,S2) (SPEC S231T290-1027) (USE WITH CONFIG "D" MASTER MODULE. SEE REPAIR FOR ADDITIONAL INFORMATION) (OPT ITEMS 11B,11C,11D)	IA-KA QA-SA	2
-11B	BCREFA0512		.SWITCH-LIGHTED PUSHBUTTON IND (V81590) (433-673-1004-4027) (S1,S2) (SPEC S231T290-4027) (USE WITH CONFIG "D" MASTER MODULE. SEE REPAIR FOR ADDITIONAL INFORMATION) (OPT ITEMS 11A,11C,11D)	IA-KA QA-SA	2
-11C	851-30768-2027		.SWITCH-LIGHTED PUSHBUTTON IND (V96182) (S1,S2) (SPEC S231T290-2027) (OPT ITEMS 11A,11B,11D)	IA-KA QA-SA	2
-11D	S231T290-5027		.SWITCH-LIGHTED PUSHBUTTON IND (S1,S2) (OPT ITEMS 11A,11B,11C)	IA-KA QA-SA	2

30-11-52

ILLUSTRATED PARTS LIST
01.101 Page 1053
Jul 01/03

FIG. & ITEM	PART NO.	AIRLINE PART NUMBER	NOMENCLATURE 1234567	EFF CODE	QTY PER ASSY
01-15	800000121-1		.CONNECTOR- (V05617) (J4)	A,C,D F,G, J-Q, U-W, X,Z, AA,CA DA, FA-LA QA-SA	1
20	BCREF6200		.LIGHT ASSY-VALVE IND (V81590) (434-674-1005-1115) (L1,L2) (SPEC S231T300-1115)	A,C,D F,M, N,U,V X,Z, AA,CA IA,JA QA,RA	2
-20A	BCREF8486		.LIGHT ASSY-VALVE IND (V81590) (434-674-1031-2115) (L1,L2) (OPT ITEM 20B) (SPEC S231T300-2115)	G,J-L P,Q, W,DA, FA-HA KA,LA SA	2
-20B	BCREF6200		.LIGHT ASSY-VALVE IND (V81590) (434-674-1005-1115) (L1,L2) (OPT ITEM 20A) (SPEC S231T300-1115)	G,J-L P,Q, W,DA, FA-HA KA,LA SA	2
25	233T3241-2		.BASEPLATE ASSY	A,C,D F,G, J-Q, U-W, X,Z, AA,CA DA, FA-LA QA-SA	1
			ATTACHING PARTS		

30-11-52

 ILLUSTRATED PARTS LIST
 01.101 Page 1054
 Jul 01/03

FIG. & ITEM	PART NO.	AIRLINE PART NUMBER	NOMENCLATURE 1234567	EFF CODE	QTY PER ASSY
01-30	NAS514P632-5		.SCREW	A,C,D ,F,G, J-Q, U-W, X,Z, AA,CA DA, FA-LA QA-SA	3
35	SF6G6CBB5D		-----*----- ..NUT- (V12324) (SPEC BACN10PA06-6)	A,C,D ,F,G, J-Q, U-W, X,Z, AA,CA DA, FA-LA QA-SA	2
40	DBMB1400-6A1		..STUD ASSY- (V08524) (SPEC BACS21DD1B)	A,C,D ,F,G, J-Q, U-W, X,Z, AA,CA DA, FA-LA QA-SA	4
45	BACP10U0225N		..PANEL	A,C,D ,F,G, J-Q, U-W, X,Z, AA,CA DA, FA-LA QA-SA	1
50	BACS12CB06-5		DELETED		

30-11-52

ILLUSTRATED PARTS LIST
01.101 Page 1055
Jul 01/03

FIG. & ITEM	PART NO.	AIRLINE PART NUMBER	NOMENCLATURE 1234567	EFF CODE	QTY PER ASSY
01-50A	NAS1801-06-5		.SCREW	A,C,D ,F,G, J-Q, U-W, X,Z, AA,CA DA, FA-LA QA-SA	3
55	MS35338-41		.WASHER	A,C,D ,F,G, J-Q, U-W, X,Z, AA,CA DA, FA-LA QA-SA	3
60	69B46200-11		.STANDOFF	A,C,D ,F,G, J-Q, U-W, X,Z, AA,CA DA, FA-LA QA-SA	3
65 65A	BACS12CB04-5 NAS1801-04-5		DELETED .SCREW	A,C,D ,F,G, J-Q, U-W, X,Z, AA,CA DA, FA-LA QA-SA	6

30-11-52

 ILLUSTRATED PARTS LIST
 01.101 Page 1056
 Jul 01/03

 **BOEING**
COMPONENT
MAINTENANCE MANUAL

FIG. & ITEM	PART NO.	AIRLINE PART NUMBER	NOMENCLATURE 1234567	EFF CODE	QTY PER ASSY
01-70	K19798-04		.NUT- (V15653) (SPEC BACN10NW1) (OPT RMA4812-160-40 (V72962)) (OPT 293162 (V60119))	A,C,D ,F,G, J-Q, U-W, X,Z, AA,CA DA, FA-LA QA-SA	6
75	ZZWAC1714-15P		.CONNECTOR (V49367) (SPEC BACC45FN14-15P) (OPT C48-10R14-15P102 (V13556)) (OPT 48-10R14-15P300 (V02660)) (J2)	A,C,D ,F,G, J-Q, U-W, X,Z, AA,CA DA, FA-LA QA-SA	1
80	ZZWAC1712-12P8		.CONNECTOR- (V49367) (SPEC BACC45FN12-12P8) (OPT C48-10R12-12P8-10 (V13556)) (OPT 48-10R12-12P8-300 (V02660)) (J1)	A,C,D ,F,G, J-Q, U-W, X,Z, AA,CA DA, FA-LA QA-SA	1
85	ZZWAC1714-15P7		.CONNECTOR- (V49367) (SPEC BACC45FN14-15P7) (OPT C48-10R14-15P7-10 (V13556)) (OPT 48-10R14-15P7-300 (V02660)) (J3)	A,D,G K-Q,X AA,DA GA-LA	1

30-11-52

ILLUSTRATED PARTS LIST
01.101 Page 1057
Jul 01/03

FIG. & ITEM	PART NO.	AIRLINE PART NUMBER	NOMENCLATURE 1234567	EFF CODE	QTY PER ASSY
01- -85A	ZZWAC1716-24P8		.CONNECTOR- (V49367) (SPEC BACC45FN16-24P8) (OPT C48-10R16-24P8-10 (V13556)) (OPT 48-10R16-24P8-300 (V02660)) (J3)	C,F,J U-W,Z CA,FA QA-SA	1
90	233T6200-71		.BRACKET-SPRT	A,D,G K,L,X AA,DA GA,HA	1
-90A	233T6200-97		.BRACKET-SPRT	C,F,J Z,CA, FA	1
R -90B	233T6200-147		.BRACKET-SPRT	M-Q, IA-LA	1
R -90C	233T6200-148		.BRACKET-SPRT	U-W, QA-SA	1
-95	233T3241-3		.WIRE BUNDLE ASSY	A,D,G K,L,X AA,DA GA,HA	1
-95A	233T3241-9		.WIRE BUNDLE ASSY	C,F, J,Z, CA,FA	1
R -95B	233T3241-3		.WIRE BUNDLE ASSY (MODIFIED BY CSB 233T3241-30-01)	M-Q, IA-LA	1
R -95C	233T3241-9		.WIRE BUNDLE ASSY (MODIFIED BY CSB 233T3241-30-01)	U-W, QA-SA	1
-100	M39029-1-16-20		..CONTACT	A,D,G K-Q,X AA,DA GA-LA	44

30-11-52

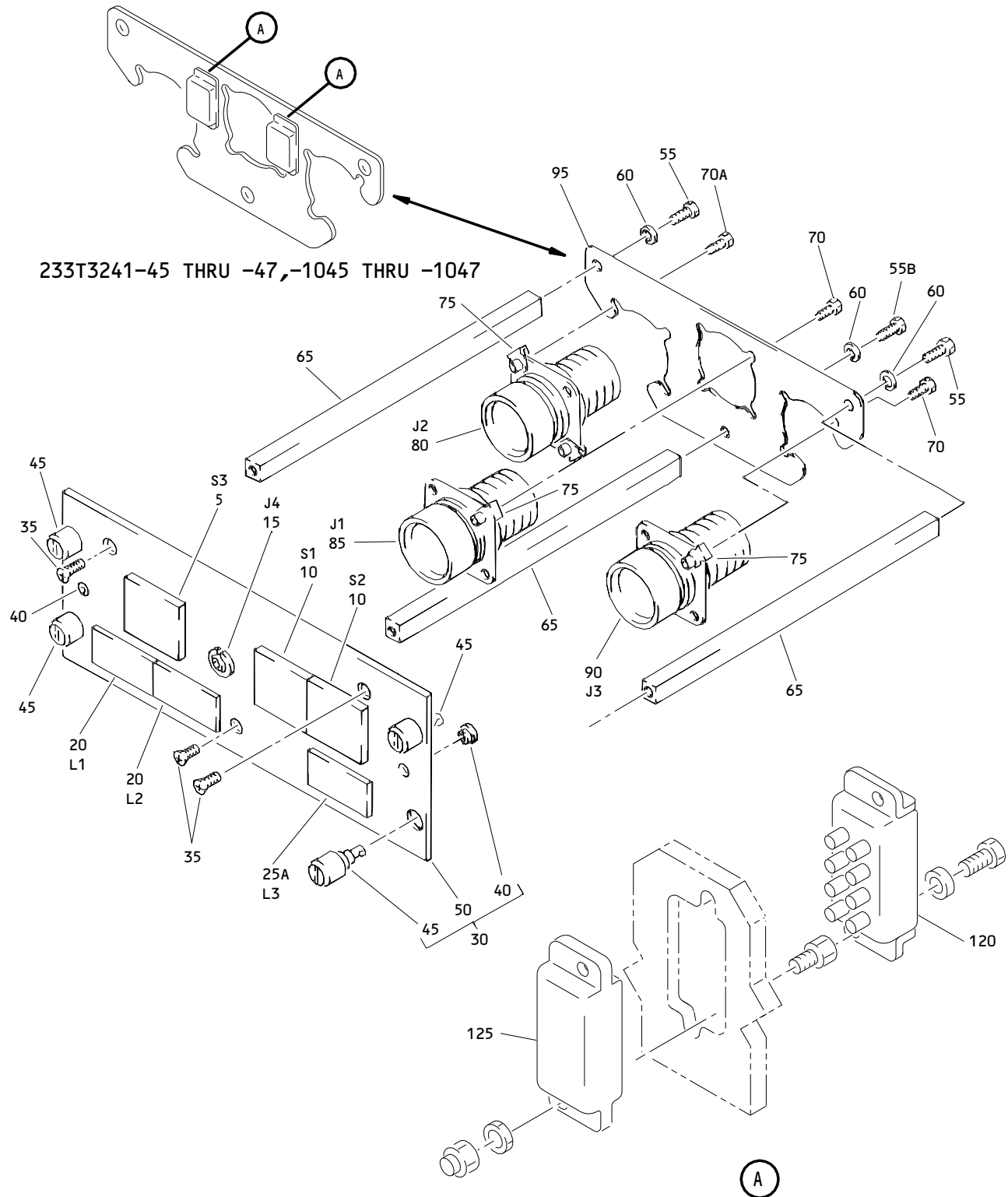
 ILLUSTRATED PARTS LIST
 01.101 Page 1058
 Jul 01/03

 **BOEING**
COMPONENT
MAINTENANCE MANUAL

FIG. & ITEM	PART NO.	AIRLINE PART NUMBER	NOMENCLATURE 1234567	EFF CODE	QTY PER ASSY
R 01-105	C48-2335-02		..CONTACT (V13556) (SPEC BACC47CN1) (OPT LRM20W16F74 (V09922)) (OPT ZL4020-36LT (V49367)) (OPT 48-2335-02 (V02660))	M-Q, U-W, IA-LA QA-SA	10
R -110	M39029-1-101		..CONTACT	M-Q, U-W, IA-LA QA-SA	15
R -115	34138		..SPLICE (V00779)	M-Q, U-W, IA-LA QA-SA	10
R 120	HFW1204K01		..RELAY (V71482) (SPEC BACR13CD2) (OPT BR16S233 (V09026)) (OPT EE4AA005 (V35344)) (OPT 3SAV1338A2 (V01526)) (OPT HFW1206K03 (V58614))	M-Q, U-W, IA-LA QA-SA	2
R 125	451120-026		..SOCKET (V03743) (SPEC BACS16AG1) (OPT 451120-026 (V58982)) (OPT RSE120026 (V58982))	M-Q, U-W, IA-LA QA-SA	2

30-11-52

ILLUSTRATED PARTS LIST
01.101 Page 1059
Jul 01/03



Wing and Engine Anti-Ice Control Panel Assembly, M10397
 Figure 2

30-11-52

ILLUSTRATED PARTS LIST
 01.101 Page 1060
 Jul 01/03

FIG. & ITEM	PART NO.	AIRLINE PART NUMBER	NOMENCLATURE 1234567	EFF CODE	QTY PER ASSY
02- -1	233T3241-5		PANEL ASSY-M10397 WING AND ENG ANTI ICE CONT (PRE CSB 233T3241-30-01) (PRE CSB 233T3241-30-02) (PRE CSB 233T3241-30-03)	B	RF
-1A	233T3241-11		PANEL ASSY-M10397 WING AND ENG ANTI ICE CONT (PRE CSB 233T3241-30-01) (PRE CSB 233T3241-30-02) (PRE CSB 233T3241-30-03)	E	RF
-1B	233T3241-14		PANEL ASSY-M10397 WING AND ENG ANTI ICE CONT (PRE CSB 233T3241-30-01) (PRE CSB 233T3241-30-03)	H	RF
-1C	233T3241-25		DELETED		
R -1D	233T3241-45		PANEL ASSY-M10397 WING AND ENG ANTI-ICE CONT (PRE CSB 233T3241-30-03) (POST CSB 233T3241-30-01)	R	RF
R -1E	233T3241-46		PANEL ASSY-M10397 WING AND ENG ANTI-ICE CONT (PRE CSB 233T3241-30-03) (POST CSB 233T3241-30-01)	S	RF
R -1F	233T3241-47		PANEL ASSY-M10397 WING AND ENG ANTI-ICE CONT (PRE CSB 233T3241-30-03) (POST CSB 233T3241-30-01)	T	RF
-1G	233T3241-1005		PANEL ASSY-M10397 WING AND ENG ANTI-ICE CONT (POST CSB 233T3241-30-03)	Y	RF
-1H	233T3241-1011		PANEL ASSY-M10397 WING AND ENG ANTI-ICE CONT (POST CSB 233T3241-30-03)	BA	RF
-1J	233T3241-1014		PANEL ASSY-M10397 WING AND ENG ANTI-ICE CONT (POST CSB 233T3241-30-03)	EA	RF
-1K	233T3241-1045		PANEL ASSY-M10397 WING AND ENG ANTI-ICE CONT (POST CSB 233T3241-30-03)	MA	RF
-1L	233T3241-1046		PANEL ASSY-M10397 WING AND ENG ANTI-ICE CONT (POST CSB 233T3241-30-03)	NA	RF
-1M	233T3241-1047		PANEL ASSY-M10397 WING AND ENG ANTI-ICE CONT (POST CSB 233T3241-30-03)	PA	RF

30-11-52

FIG. & ITEM	PART NO.	AIRLINE PART NUMBER	NOMENCLATURE 1234567	EFF CODE	QTY PER ASSY
02-5	851-30768-2012		.SWITCH-LIGHTED PUSHBUTTON IND (ON) (V96182) (S3) (SPEC S231T290-2012)	B	1
-5A	851-30768-1012		DELETED		
-5B	851-30768-3012		.SWITCH-LIGHTED PUSHBUTTON IND (ON) (V96182) (S3) (SPEC S231T290-3012) (OPT ITEM 5C)	E,H	1
-5C	BCREF7604		.SWITCH-LIGHTED PUSHBUTTON IND (ON) (V81590) (433-673-1001-1012) (S3) (SPEC S231T290-1012) (OPT ITEM 5B)	E,H	1
-5D	BCREFA0503		DELETED		
-5E	S231T290-5012		DELETED		
R -5F	S231T290-5012		.SWITCH-LIGHTED PUSHBUTTON IND (S3) (OPT ITEMS 5G,5H,5J WITH GREEN DOT IDENTIFIER ON CAP ASSY)	R-T	1
R -5G	BCREFA0503		.SWITCH-LIGHTED PUSHBUTTON IND (V81590) (433-673-1004-4012) (S3) (SPEC S231T290-4012) (OPT ITEMS 5F,5H,5J WITH GREEN DOT IDENTIFIER ON CAP ASSY)	R-T	1

30-11-52

 ILLUSTRATED PARTS LIST
 01.101 Page 1062
 Jul 01/03

 **BOEING**
COMPONENT
MAINTENANCE MANUAL

FIG. & ITEM	PART NO.	AIRLINE PART NUMBER	NOMENCLATURE 1234567	EFF CODE	QTY PER ASSY
R 02-5H	851-30768-2012		.SWITCH-LIGHTED PUSHBUTTON IND (V96182) (S3) (SPEC S231T290-2012) (OPT ITEMS 5F,5G,5J WITH GREEN DOT IDENTIFIER ON CAP ASSY)	R-T	1
R -5J	BCREF7604		.SWITCH-LIGHTED PUSHBUTTON IND (V81590) (433-673-1001-1012) (S3) (SPEC S231T290-1012) (OPT ITEMS 5F,5G,5H WITH GREEN DOT IDENTIFIER ON CAP ASSY)	R-T	1
-5K	BCREF7604		.SWITCH-LIGHTED PUSHBUTTON IND (V81590) (433-673-1001-1012) (S3) (SPEC S231T290-1012) (USE WITH CONFIG "D" MASTER MODULE. SEE REPAIR FOR ADDITIONAL INFORMATION) (OPT ITEMS 5L,5M,5N,5P)	Y, BA,EA	1
-5L	BCREFA0503		.SWITCH-LIGHTED PUSHBUTTON IND (V81590) (433-673-1004-4012) (S3) (SPEC S231T290-4012) (USE WITH CONFIG "D" MASTER MODULE. SEE REPAIR FOR ADDITIONAL INFORMATION) (OPT ITEMS 5K,5M,5N,5P)	Y, BA,EA	1

30-11-52

ILLUSTRATED PARTS LIST
01.101 Page 1063
Jul 01/03

FIG. & ITEM	PART NO.	AIRLINE PART NUMBER	NOMENCLATURE 1234567	EFF CODE	QTY PER ASSY
02- -5M	BCREF7604		.SWITCH-LIGHTED PUSHBUTTON IND (V96182) (S3) (SPEC S231T290-3012) (OPT ITEMS 5K,5L,5N,5P)	Y, BA,EA	1
-5N	851-30768-2012		.SWITCH-LIGHTED PUSHBUTTON IND (V96182) (S3) (SPEC S231T290-2012) (OPT ITEMS 5K,5L,5M,5P)	Y, BA,EA	1
-5P	S231T290-5012		.SWITCH-LIGHTED PUSHBUTTON IND (S3) (OPT ITEMS 5K,5L,5M,5N)	Y, BA,EA	1
-5Q	BCREF7604		.SWITCH-LIGHTED PUSHBUTTON IND (V81590) (433-673-1001-1012) (S3) (SPEC S231T290-1012) (USE WITH CONFIG "D" MASTER MODULE. SEE REPAIR FOR ADDITIONAL INFORMATION) (OPT ITEMS 5R,5S,5T)	MA,NA PA	1
-5R	BCREFA0503		.SWITCH-LIGHTED PUSHBUTTON IND (V81590) (433-673-1004-4012) (S3) (SPEC S231T290-4012) (USE WITH CONFIG "D" MASTER MODULE. SEE REPAIR FOR ADDITIONAL INFORMATION) (OPT ITEMS 5Q,5S,5T)	MA,NA PA	1
-5S	851-30768-2012		.SWITCH-LIGHTED PUSHBUTTON IND (V96182) (S3) (SPEC S231T290-2012) (OPT ITEMS 5Q,5R,5T)	MA,NA PA	1

30-11-52

 ILLUSTRATED PARTS LIST
 01.101 Page 1064
 Jul 01/03

FIG. & ITEM	PART NO.	AIRLINE PART NUMBER	NOMENCLATURE 1234567	EFF CODE	QTY PER ASSY
02- -5T	S231T290-5012		.SWITCH-LIGHTED PUSHBUTTON IND (S3) (OPT ITEMS 5Q,5R,5S)	MA,NA PA	1
10	851-30768-2027		.SWITCH-LIGHTED PUSHBUTTON IND (ON/VALVE) (V96182) (S1, S2) (SPEC S231T290-2027)	B	2
-10A	851-30768-1027		DELETED		
-10B	851-30768-3027		.SWITCH-LIGHTED PUSHBUTTON IND (ON/VALVE) (V96182) (S1, S2) (SPEC S231T290-3027) (OPT ITEM 10C)	E,H	2
-10C	BCREF7613		.SWITCH-LIGHTED PUSHBUTTON IND (ON/VALVE) (V81590) (433-673-1001-1027) (S1, S2) (SPEC S231T290-1027) (OPT ITEM 10B)	E,H	2
-10D	S231T290-4027		DELETED		
-10E	S231T290-5027		DELETED		
-10F	BCREFA0512		DELETED		
R -10G	S231T290-5027		.SWITCH-LIGHTED PUSHBUTTON IND (S1, S2) (OPT ITEMS 10H,10J,10K WITH GREEN DOT IDENTI- FIER ON CAP ASSY)	R-T	2

30-11-52

FIG. & ITEM	PART NO.	AIRLINE PART NUMBER	NOMENCLATURE 1234567	EFF CODE	QTY PER ASSY
R 02- -10H	BCREFA0512		.SWITCH-LIGHTED PUSHBUTTON (V81590) (433-673-1004-4027) (S1, S2) (SPEC S231T290-4027) (OPT ITEMS 10G,10J,10K WITH GREEN DOT IDENTIFIER ON CAP ASSY)	R-T	2
R -10J	851-30768-2027		.SWITCH-LIGHTED PUSHBUTTON IND (V96182) (S1, S2) (SPEC S231T290-2027) (OPT ITEMS 10G,10H,10K WITH GREEN DOT IDENTIFIER ON CAP ASSY)	R-T	2
-10K	BCREF7613		.SWITCH-LIGHTED PUSHBUTTON IND (V81590) (433-673-1001-1027) (S1,S2) (SPEC S231T290-1027) (OPT ITEMS 10G,10H,10J WITH GREEN DOT IDENTIFIER ON CAP ASSY)	R-T	2
-10L	BCREF7613		.SWITCH-LIGHTED PUSHBUTTON IND (V81590) (433-673-1001-1027) (S1,S2) (SPEC S231T290-1027) (USE WITH CONFIG "D" MASTER MODULE. SEE REPAIR FOR ADDITIONAL INFORMATION) (OPT ITEMS 10M,10N,10P, 10Q)	Y,BA, EA	2

30-11-52

 ILLUSTRATED PARTS LIST
 01.101 Page 1066
 Jul 01/03

FIG. & ITEM	PART NO.	AIRLINE PART NUMBER	NOMENCLATURE 1234567	EFF CODE	QTY PER ASSY
02- -10M	BCREFA5012		.SWITCH-LIGHTED PUSHBUTTON IND (V81590) (433-673-1004-4027) (S1,S2) (SPEC S231T290-4027) (USE WITH CONFIG "D" MASTER MODULE. SEE REPAIR FOR ADDITIONAL INFORMATION) (OPT ITEMS 10L,10N,10P, 10Q)	Y, BA,EA	2
-10N	851-30768-3027		.SWITCH-LIGHTED PUSHBUTTON IND (V96182) (S1,S2) (SPEC S231T290-3027) (OPT ITEMS 10L,10M,10P, 10Q)	Y, BA,EA	2
-10P	851-30768-2027		.SWITCH-LIGHTED PUSHBUTTON IND (V96182) (S1,S2) (SPEC S231T290-2027) (OPT ITEMS 10L,10M,10N, 10Q)	Y, BA,EA	2
-10Q	S231T290-5027		.SWITCH-LIGHTED PUSHBUTTON IND (S1,S2) (OPT ITEMS 10L,10M,10N, 10P)	Y, BA,EA	2
-10R	BCREF7613		.SWITCH-LIGHTED PUSHBUTTON IND (V81590) (433-673-1001-1027) (S1,S2) (SPEC S231T290-1027) (USE WITH CONFIG "D" MASTER MODULE. SEE REPAIR FOR ADDITIONAL INFORMATION) (OPT ITEM 10S,10T,10U)	MA,NA PA	2

30-11-52

ILLUSTRATED PARTS LIST
01.101 Page 1067
Jul 01/03

FIG. & ITEM	PART NO.	AIRLINE PART NUMBER	NOMENCLATURE 1234567	EFF CODE	QTY PER ASSY
02- -10S	BCREFA0512		.SWITCH-LIGHTED PUSHBUTTON IND (V81590) (433-673-1004-4027) (S1,S2) (SPEC S231T290-4027) (USE WITH CONFIG "D" MASTER MODULE. SEE REPAIR FOR ADDITIONAL INFORMATION) (OPT ITEMS 10R,10T,10U)	MA,NA PA	2
-10T	851-30768-2027		.SWITCH-LIGHTED PUSHBUTTON IND (V96182) (S1,S2) (SPEC S231T290-2027) (OPT ITEMS 10R,10S,10U)	MA,NA PA	2
-10U	S231T290-5027		.SWITCH-LIGHTED PUSHBUTTON IND (S1,S2) (OPT ITEMS 10R,10S,10T)	MA,NA PA	2
15	800000121-1		.CONNECTOR (V05617) (J4)	B,E,H R-T, Y,BA, EA, MA-PA	1
20	BCREF6200		.LIGHT ASSY-VALVE IND (V81590) (434-674-1005-1115) (L1,L2) (SPEC S231T300-1115)	B,E,R S,Y, BA,MA NA	2

30-11-52

 ILLUSTRATED PARTS LIST
 01.101 Page 1068
 Jul 01/03

FIG. & ITEM	PART NO.	AIRLINE PART NUMBER	NOMENCLATURE 1234567	EFF CODE	QTY PER ASSY
02- -20A	BCREF8486		.LIGHT ASSY-VALVE IND (V81590) (434-674-1031-2115) (L1,L2) (SPEC S231T300-2115) (OPT ITEM 20B)	H,T, EA,PA	2
-20B	BCREF6200		.LIGHT ASSY-VALVE IND (V81590) (434-674-1005-1115) (L1,L2) (SPEC S231T300-1115) (OPT ITEM 20A)	H,T, EA,PA	2
25 25A	S231T300-1280 BCREF6525		DELETED .LIGHT ASSY-ICING IND (V81590) (434-674-1005-1280) (L3) (SPEC 231T300-1280)	B,E,R S,Y, BA,MA NA	1
-25B	BCREF8512		.LIGHT ASSY-ICING IND (V81590) (434-674-1031-2280) (L3) (SPEC 231T300-2280) (OPT ITEM 25C)	H,T EA,PA	1
-25C	BCREF6525		.LIGHT ASSY-ICING IND (V81590) (434-674-1005-1280) (L3) (SPEC 231T300-1280) (OPT ITEM 25B)	H,T EA,PA	1
30	233T3241-6		.BASEPLATE ASSY	B,E,H R-T,Y BA,EA MA-PA	1
35	NAS514P632-5		ATTACHING PARTS .SCREW -----*-----	B,E,H R-T,Y BA,EA MA-PA	3

30-11-52

FIG. & ITEM	PART NO.	AIRLINE PART NUMBER	NOMENCLATURE 1234567	EFF CODE	QTY PER ASSY
02-40	SF6G6CBB5D		..NUT (V12324) (SPEC BACN10PA06-6)	B,E,H R-T,Y BA,EA MA-PA	2
45	DBMB1400-6A1		..STUD ASSY (V08524) (SPEC BACS21DD1B)	B,E,H R-T,Y BA,EA MA-PA	4
50	BACP10U0225N		..PANEL	B,E,H R-T,Y BA,EA MA-PA	1
55 55B	BACS12CB06-5 NAS1801-06-5		DELETED .SCREW	B,E,H R-T,Y BA,EA MA-PA	3
60	MS35338-41		.WASHER	B,E,H R-T,Y BA,EA MA-PA	3
65	69B46200-11		.STANDOFF	B,E,H R-T,Y BA,EA MA-PA	3
70 70A	BACS12CB04-5 NAS1801-04-5		DELETED .SCREW	B,E,H R-T,Y BA,EA MA-PA	6

30-11-52

 ILLUSTRATED PARTS LIST
 01.101 Page 1070
 Jul 01/03

FIG. & ITEM	PART NO.	AIRLINE PART NUMBER	NOMENCLATURE 1234567	EFF CODE	QTY PER ASSY
02-75	K19798-04		.NUT (V15653) (SPEC BACN10NW1) (OPT RMA4812-160-40 (V72962)) (OPT 293162 (V60119))	B,E,H R-T,Y BA,EA MA-PA	6
80	ZZWAC1714-15P		.CONNECTOR (V49367) (SPEC BACC45FN14-15P) (OPT C48-10R14-15P102 (V13556)) (OPT 48-10R14-15P300 (V02660)) (J2)	B,E,H R-T,Y BA,EA MA-PA	1
85	ZZWAC1712-12P8		.CONNECTOR (V49367) (SPEC BACC45FN12-12P8) (OPT C48-10R12-12P8-10 (V13556)) (OPT 48-10R12-12P8-300 (V02660)) (J1)	B,E,H R-T,Y BA,EA MA-PA	1
90	ZZWAC1714-15P7		.CONNECTOR (V49367) (SPEC BACC45FN14-15P7) (OPT C48-10R14-15P7-10 (V13556)) (OPT 48-10R14-15P7-300 (V02660)) (J3)	B,E,H R-T,Y BA,EA MA-PA	1

30-11-52

ILLUSTRATED PARTS LIST
01.101 Page 1071
Jul 01/03

FIG. & ITEM	PART NO.	AIRLINE PART NUMBER	NOMENCLATURE 1234567	EFF CODE	QTY PER ASSY
02-95	233T6200-71		.BRACKET-SPRT	B,E, H,Y, BA,EA	1
R -95A	233T6200-147		.BRACKET-SPRT	R-T MA-PA	1
-100	233T3241-7		.WIRE BUNDLE ASSY	B,E, H,Y, BA,EA	1
R -100A	233T3241-7		.WIRE BUNDLE ASSY (MODIFIED BY CSB 233T3241-30-01)	R-T MA-PA	1
-105	M39029-1-16-20		..CONTACT	B,E,H H,Y, BA,EA	47
R -110	C48-2335-02		..CONTACT (V13556) (SPEC BACC47CN1) (OPT LRM20W16F74 (V09922)) (OPT ZL4020-36LT (V49367)) (OPT 48-2335-02 (V02660))	R-T MA-PA	10
R -115	M39029-1-101		..CONTACT	R-T, MA-PA	15
R 120	HFW1204K01		..RELAY (V71482) (SPEC BACR13CD2) (OPT BR16S233 (V09026)) (OPT EE4AA005 (V35344)) (OPT 3SAV1338A2 (V01526)) (OPT HFW1206K03 (V58614))	R-T, MA-PA	2

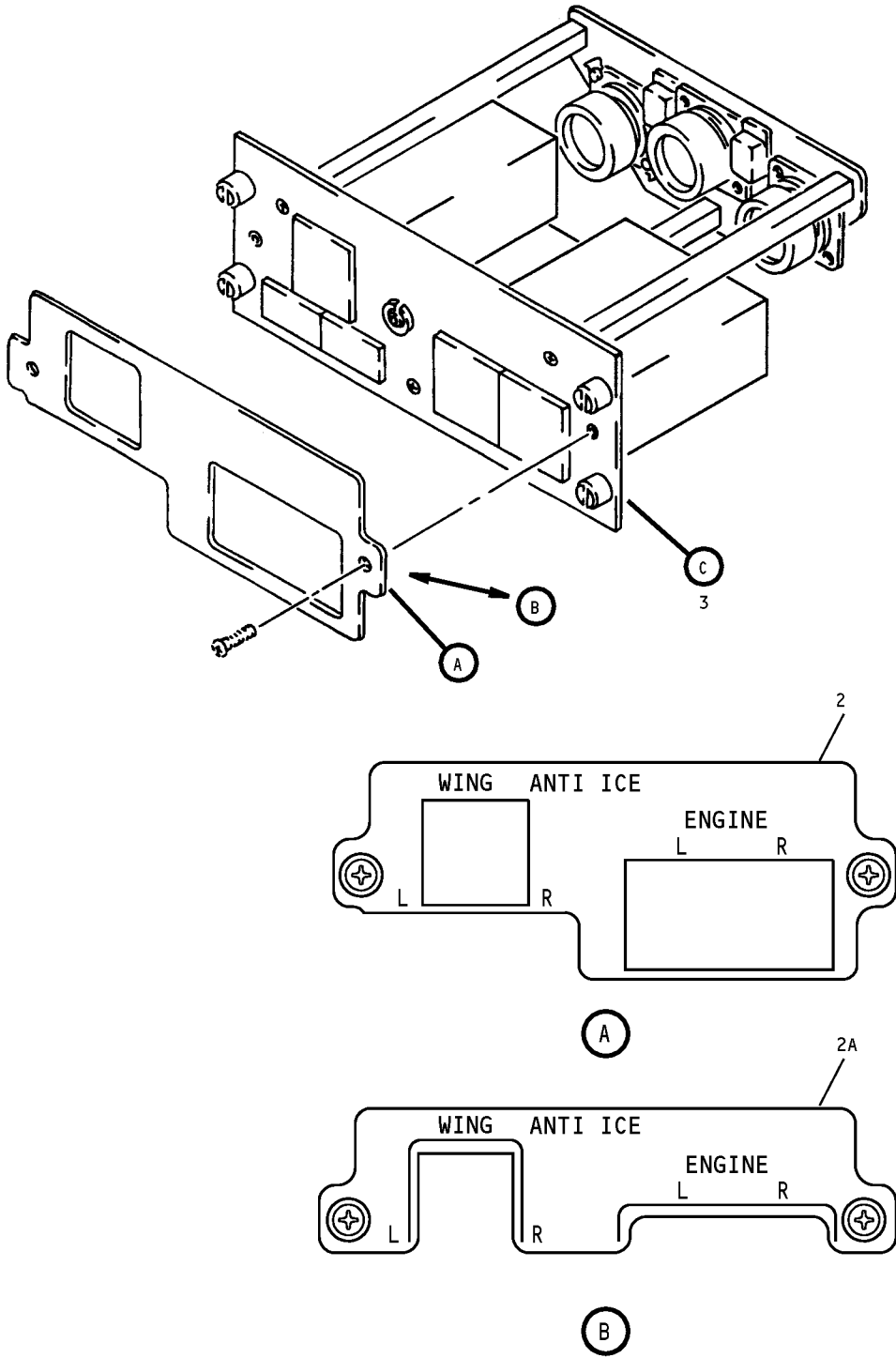
30-11-52

 ILLUSTRATED PARTS LIST
 01.101 Page 1072
 Jul 01/03

FIG. & ITEM	PART NO.	AIRLINE PART NUMBER	NOMENCLATURE	EFF CODE	QTY PER ASSY
			1234567		
R 02-125	451120-026		..SOCKET (V03743) (SPEC BACS16AG1) (OPT 451120-026 (V58982)) (OPT RSE120026 (V58982))	R-T, MA-PA	2
R -130	34138		..SPLICE	R-T, MA-PA	10

30-11-52

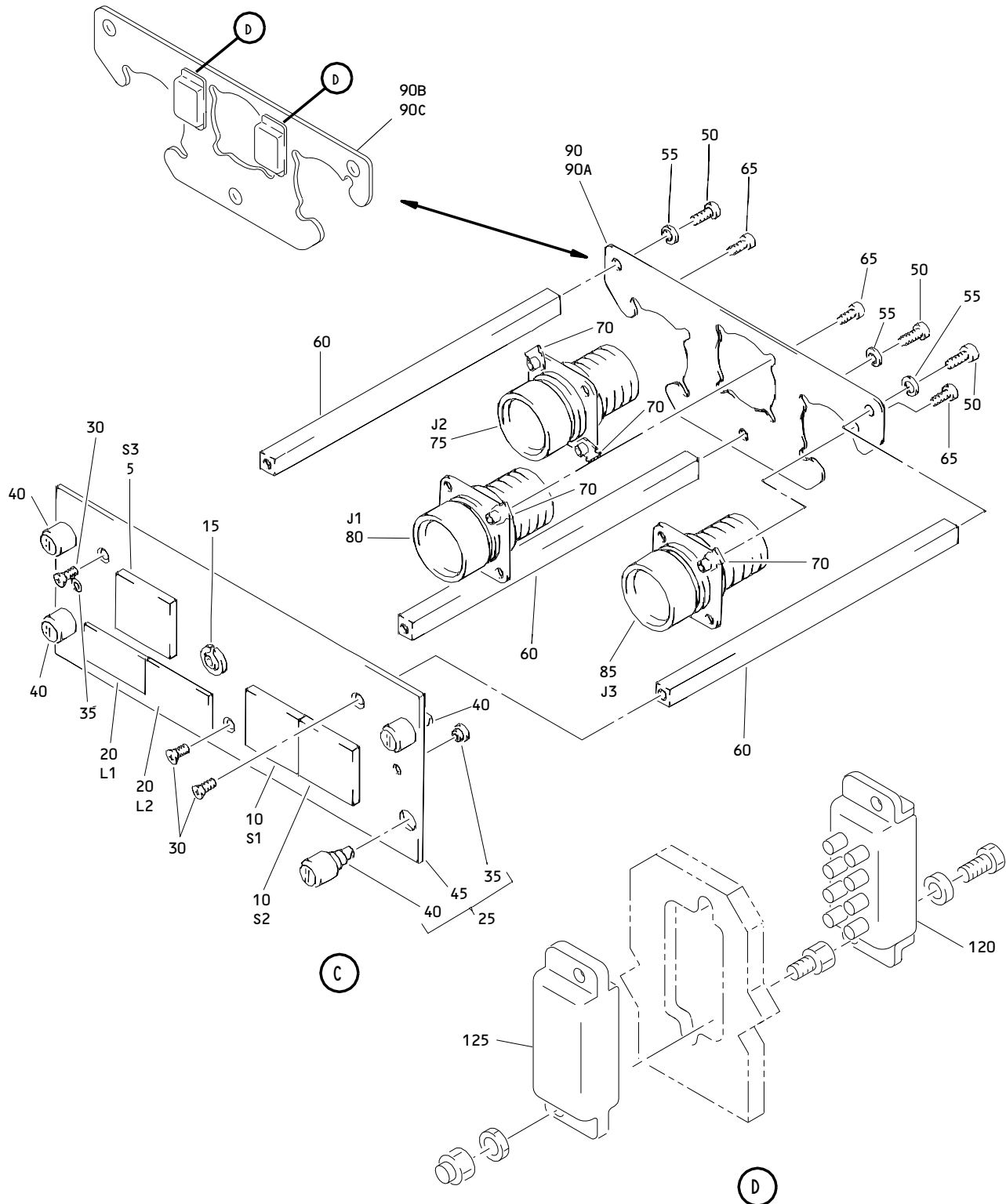
ILLUSTRATED PARTS LIST
01.101 Page 1073
Jul 01/03



Wing and Engine Anti-Ice Control Panel Assembly, M10397
Figure 3 (Sheet 1)

30-11-52

ILLUSTRATED PARTS LIST
01.1 Page 1075
Jul 01/03



Wing and Engine Anti-Ice Control Panel Assembly, M10397
 Figure 3 (Sheet 2)

30-11-52

ILLUSTRATED PARTS LIST
 01.1 Page 1076
 Jul 01/03

FIG. & ITEM	PART NO.	AIRLINE PART NUMBER	NOMENCLATURE 1234567	EFF CODE	QTY PER ASSY
03- -1	233T3100-65		PANEL ASSY-M10397 WING AND ENG ANTI ICE CONT (PRE CSB 233T3241-30-03 R1)	TA	RF
-1A	233T3100-135		PANEL ASSY-M10397 WING AND ENG ANTI ICE CONT (PRE CSB 233T3241-30-03 R1)	VA	RF
-1B	233T3100-160		PANEL ASSY-M10397 WING AND ENG ANTI ICE CONT (PRE CSB 233T3241-30-03 R1)	XA	RF
-1C	233T3100-178		PANEL ASSY-M10397 WING AND ENG ANTI ICE CONT (PRE CSB 233T3241-30-03 R1)	YA	RF
-1D	233T3100-180		PANEL ASSY-M10397 WING AND ENG ANTI ICE CONT (PRE CSB 233T3241-30-03 R1)	BB	RF
-1E	233T3100-248		PANEL ASSY-M10397 WING AND ENG ANTI ICE CONT (PRE CSB 233T3241-30-03 R1)	CB	RF
-1F	233T3100-250		PANEL ASSY-M10397 WING AND ENG ANTI ICE CONT (PRE CSB 233T3241-30-03 R1)	EB	RF
-1G	233T3100-292		PANEL ASSY-M10397 WING AND ENG ANTI ICE CONT (PRE CSB 233T3241-30-03 R1)	FB	RF
-1H	233T3241-1306		PANEL ASSY-M10397 WING AND ENG ANTI ICE CONT (POST CSB 233T3241-30-03 R1)	GB	RF
-1J	233T3241-1307		PANEL ASSY-M10397 WING AND ENG ANTI ICE CONT (POST CSB 233T3241-30-03 R1)	HB	RF

30-11-52

ILLUSTRATED PARTS LIST
01.1 Page 1077
Jul 01/03

FIG. & ITEM	PART NO.	AIRLINE PART NUMBER	NOMENCLATURE 1234567	EFF CODE	QTY PER ASSY
03- -1K	233T3241-1310		PANEL ASSY-M10397 WING AND ENG ANTI ICE CONT (POST CSB 233T3241-30-03 R1)	LB	RF
-1L	233T3241-1311		PANEL ASSY-M10397 WING AND ENG ANTI ICE CONT (POST CSB 233T3241-30-03 R1)	MB	RF
-1M	233T3241-1313		PANEL ASSY-M10397 WING AND ENG ANTI ICE CONT (POST CSB 233T3241-30-03 R1)	PB	RF
-1N	233T3241-1314		PANEL ASSY-M10397 WING AND ENG ANTI ICE CONT (POST CSB 233T3241-30-03 R1)	QB	RF
-1P	233T3241-1316		PANEL ASSY-M10397 WING AND ENG ANTI ICE CONT (POST CSB 233T3241-30-03 R1)	SB	RF
-1Q	233T3241-1317		PANEL ASSY-M10397 WING AND ENG ANTI ICE CONT (POST CSB 233T3241-30-03 R1)	TB	RF
-1R	233T3241-1323		PANEL ASSY-M10397 WING AND ENG ANTI ICE CONT (POST CSB 233T3241-30-03 R1)	UB	RF
-1S	233T3241-1324		PANEL ASSY-M10397 WING AND ENG ANTI ICE CONT (POST CSB 233T3241-30-03 R1)	VB	RF
-1T	233T3241-1325		PANEL ASSY-M10397 WING AND ENG ANTI ICE CONT (POST CSB 233T3241-30-03 R1)	WB	RF
-1U	233T3241-1326		PANEL ASSY-M10397 WING AND ENG ANTI ICE CONT (POST CSB 233T3241-30-03 R1)	XB	RF

30-11-52

 ILLUSTRATED PARTS LIST
 01.1 Page 1078
 Jul 01/03

FIG. & ITEM	PART NO.	AIRLINE PART NUMBER	NOMENCLATURE 1234567	EFF CODE	QTY PER ASSY
03- -1V	233T3241-1327		PANEL ASSY-M10397 WING AND ENG ANTI ICE CONT (POST CSB 233T3241-30-03 R1)	YB	RF
-1W	233T3241-1332		PANEL ASSY-M10397 WING AND ENG ANTI ICE CONT (POST CSB 233T3241-30-03 R1)	FC	RF
-1X	233T3241-1333		PANEL ASSY-M10397 WING AND ENG ANTI ICE CONT (POST CSB 233T3241-30-03 R1)	GC	RF
-1Y	233T3241-1334		PANEL ASSY-M10397 WING AND ENG ANTI ICE CONT (POST CSB 233T3241-30-03 R1)	HC	RF
2	800-001043		.LIGHTPLATE (V05617) (SPEC S233T100-1070) (OPT S233T100-1070 (V51896))	TA, GB,UB	1
2A	S233T100-6027		.LIGHTPLATE (V51896)	VA, XA,YA BB,CB EB,FB HB,LB MB,PB QB,SB TB, VB-YB FC-HC	1

30-11-52

FIG. & ITEM	PART NO.	AIRLINE PART NUMBER	NOMENCLATURE 1234567	EFF CODE	QTY PER ASSY
03-3	233T3241-1		.PANEL ASSY (LIMITED)	TA,VA	1
-3A	233T3241-8		.PANEL ASSY (LIMITED)	XA	1
-3B	233T3241-10		.PANEL ASSY (LIMITED)	YA	1
-3C	233T3241-12		.PANEL ASSY (LIMITED)	BB	1
-3D	233T3241-13		.PANEL ASSY (LIMITED)	CB	1
-3E	233T3241-15		.PANEL ASSY (LIMITED)	EB	1
-3F	233T3241-20		.PANEL ASSY (LIMITED)	FB	1
-3G	233T3241-41		.PANEL ASSY (LIMITED)	TA,VA	1
-3H	233T3241-42		.PANEL ASSY (LIMITED)	YA	1
-3J	233T3241-43		.PANEL ASSY (LIMITED)	CB	1
-3K	233T3241-44		.PANEL ASSY (LIMITED)	FB	1
-3L	233T3241-48		.PANEL ASSY (LIMITED)	XA	1
-3M	233T3241-49		.PANEL ASSY (LIMITED)	BB	1
-3N	233T3241-50		.PANEL ASSY (LIMITED)	EB	1
-3P	233T3241-1001		.PANEL ASSY	GB,HB	1
-3Q	233T3241-1008		.PANEL ASSY	LB	1

30-11-52

 ILLUSTRATED PARTS LIST
 01.1 Page 1080
 Jul 01/03

FIG. & ITEM	PART NO.	AIRLINE PART NUMBER	NOMENCLATURE 1234567	EFF CODE	QTY PER ASSY
03-					
-3R	233T3241-1010		.PANEL ASSY	MB	1
-3S	233T3241-1012		.PANEL ASSY	PB	1
-3T	233T3241-1013		.PANEL ASSY	QB	1
-3U	233T3241-1015		.PANEL ASSY	SB	1
-3V	233T3241-1020		.PANEL ASSY	TB	1
-3W	233T3241-1041		.PANEL ASSY	UB,VB	1
-3X	233T3241-1042		.PANEL ASSY	WB	1
-3Y	233T3241-1043		.PANEL ASSY	XB	1
-3Z	233T3241-1044		.PANEL ASSY	YB	1
-4	233T3241-1048		.PANEL ASSY	FC	1
-4A	233T3241-1049		.PANEL ASSY	GC	1
-4B	233T3241-1050		.PANEL ASSY	HC	1
5	851-30768-2012		..SWITCH-LIGHTED PUSHBUTTON IND (ON) (V96182) (S3) (SPEC S231T290-2012) (LIMITED)	TA, VA,XA	1
-5A	851-30768-3012		..SWITCH-LIGHTED PUSHBUTTON IND (ON) (V96182) (S3) (SPEC S231T290-3012) (LIMITED) (OPT ITEM 5B)	YA,BB CB,ED	1
-5B	BCREF7604		..SWITCH-LIGHTED PUSHBUTTON IND (ON) (V81590) (433-673-1001-1012) (S3) (SPEC S231T290-1012) (LIMITED) (OPT ITEM 5A)	YA,BB CB,ED	1

30-11-52

FIG. & ITEM	PART NO.	AIRLINE PART NUMBER	NOMENCLATURE 1234567	EFF CODE	QTY PER ASSY
03- -5C	BCREFA0503		..SWITCH-LIGHTED PUSHBUTTON IND (V81590) (433-673-1004-4012) (S3) (SPEC S231T290-4012)	FB	1
-5D	S231T290-5012		..SWITCH-LIGHTED PUSHBUTTON IND (S3) (LIMITED) (OPT ITEMS 5E,5F,5G WITH GREEN DOT IDENTIFIER ON CAP ASSY)	TA,VA XA,YA BB,CB EB	1
-5E	BCREFA0503		..SWITCH-LIGHTED PUSHBUTTON IND (V81590) (433-673-1004-4012) (S3) (SPEC S231T290-4012) (LIMITED) (OPT ITEMS 5D,5F,5G WITH GREEN DOT IDENTIFIER ON CAP ASSY)	TA,VA XA,YA BB,CB EB	1
-5F	851-30768-2012		..SWITCH-LIGHTED PUSHBUTTON IND (V96182) (S3) (SPEC S231T290-2012) (LIMITED) (OPT ITEMS 5D,5E,5G WITH GREEN DOT IDENTIFIER ON CAP ASSY)	TA,VA XA,YA BB,CB EB	1
-5G	BCREF7604		..SWITCH-LIGHTED PUSHBUTTON IND (V81590) (433-673-1001-1012) (S3) (SPEC S231T290-1012) (LIMITED) (OPT ITEMS 5D,5E,5F WITH GREEN DOT IDENTIFIER ON CAP ASSY)	TA,VA XA,YA BB,CB EB	1

30-11-52

 ILLUSTRATED PARTS LIST
 01.1 Page 1080B
 Jul 01/03



BOEING
COMPONENT
MAINTENANCE MANUAL

FIG. & ITEM	PART NO.	AIRLINE PART NUMBER	NOMENCLATURE 1234567	EFF CODE	QTY PER ASSY
03- -5H	BCREFA0503		..SWITCH-LIGHTED PUSHBUTTON IND (V81590) (433-673-1004-4012) (S3) (SPEC S231T290-4012) (USE WITH CONFIG "D" MASTER MODULE. SEE REPAIR FOR ADDITIONAL INFORMATION)	TB,YB	1
-5J	BCREF7604		..SWITCH-LIGHTED PUSHBUTTON IND (V81590) (433-673-1001-1012) (S3) (SPEC S231T290-1012) (USE WITH CONFIG "D" MASTER MODULE. SEE REPAIR FOR ADDITIONAL INFORMATION)	GB,HB LB,MB PB,QB SB	1
-5K	BCREFA0503		..SWITCH-LIGHTED PUSHBUTTON IND (V81590) (433-673-1004-4012) (S3) (SPEC S231T290-4012) (USE WITH CONFIG "D" MASTER MODULE. SEE REPAIR FOR ADDITIONAL INFORMATION) (OPT ITEMS 5K,5L,5M,5N)	GB,HB LB,MB PB,QB SB	1
-5L	851-30768-3012		..SWITCH-LIGHTED PUSHBUTTON IND (V96182) (S3) (SPEC S231T290-3012) (OPT ITEMS 5J,5K,5M,5N)	GB,HB LB,MB PB,QB SB	1
-5M	851-30768-2012		..SWITCH-LIGHTED PUSHBUTTON IND (V96182) (S3) (SPEC S231T290-2012) (OPT ITEMS 5J,5K,5L,5N)	GB,HB LB,MB PB,QB SB	1

30-11-52

ILLUSTRATED PARTS LIST
01.1 Page 1080C
Jul 01/03

FIG. & ITEM	PART NO.	AIRLINE PART NUMBER	NOMENCLATURE 1234567	EFF CODE	QTY PER ASSY
03- -5N	S231T290-5012		..SWITCH-LIGHTED PUSHBUTTON IND (S3) (OPT ITEMS 5J,5K,5L,5M)	GB,HB LB,MB PB,QB SB	1
-5P	BCREF7604		..SWITCH-LIGHTED PUSHBUTTON IND (V81590) (433-673-1001-1012) (S3) (SPEC S231T290-1012) (USE WITH CONFIG "D" MASTER MODULE. SEE REPAIR FOR ADDITIONAL INFORMATION) (OPT ITEMS 5Q,5R,5S)	UB-XB FC-HC	1
-5Q	BCREFA0503		..SWITCH-LIGHTED PUSHBUTTON IND (V81590) (433-673-1004-4012) (S3) (SPEC S231T290-4012) (USE WITH CONFIG "D" MASTER MODULE. SEE REPAIR FOR ADDITIONAL INFORMATION) (OPT ITEMS 5P,5R,5S)	UB-XB FC-HC	1
-5R	851-30768-2012		..SWITCH-LIGHTED PUSHBUTTON IND (V81590) (S3) (SPEC S231T290-2012) (OPT ITEMS 5P,5Q,5S)	UB-XB FC-HC	1

30-11-52

 ILLUSTRATED PARTS LIST
 01.1 Page 1080D
 Jul 01/03

FIG. & ITEM	PART NO.	AIRLINE PART NUMBER	NOMENCLATURE 1234567	EFF CODE	QTY PER ASSY
03- -5S	S231T290-5012		..SWITCH-LIGHTED PUSHBUTTON IND (S3) (OPT ITEMS 5P,5Q,5R)	UB-XB FC-HC	1
10	851-30768-2027		..SWITCH-LIGHTED PUSHBUTTON IND (ON/VALVE) (V96182) (S1,S2) (SPEC S231T290-2027) (LIMITED)	TA, VA,XA	2
-10A	851-30768-3027		..SWITCH-LIGHTED PUSHBUTTON IND (ON/VALVE) (V96182) (S1,S2) (SPEC S231T290-3027) (LIMITED) (OPT ITEM 10B)	YA,BB CB,EB	2
-10B	BCREF7613		..SWITCH-LIGHTED PUSHBUTTON IND (ON/VALVE) (V81590) (433-673-1001-1027) (S1,S2) (SPEC S231T290-1027) (LIMITED) (OPT ITEM 10A)	YA,BB CB,EB	2
-10C	BCREFA0512		..SWITCH-LIGHTED PUSHBUTTON IND (V81590) (433-673-1004-4027) (S1, S2) (SPEC S231T290-4027)	FB	2

30-11-52

ILLUSTRATED PARTS LIST
01.1 Page 1080E
Jul 01/03

FIG. & ITEM	PART NO.	AIRLINE PART NUMBER	NOMENCLATURE 1234567	EFF CODE	QTY PER ASSY
03- -10D	S231T290-5027		..SWITCH-LIGHTED PUSHBUTTON IND (S1, S2) (LIMITED) (OPT ITEMS 10E,10F,10G WITH GREEN DOT IDENTIFIER ON CAP ASSY)	TA,VA XA,YA BB,CB EB	2
-10E	BCREFA0512		..SWITCH-LIGHTED PUSHBUTTON IND (V81590) (433-673-1004-4027) (S1, S2) (SPEC S231T290-4027) (LIMITED) (OPT ITEMS 10D,10F,10G WITH GREEN DOT IDENTIFIER ON CAP ASSY)	TA,VA XA,YA BB,CB EB	2
-10F	851-30768-2027		..SWITCH-LIGHTED PUSHBUTTON IND (V96182) (S1, S2) (SPEC S231T290-2027) (OPT ITEMS 10D,10E,10G WITH GREEN DOT IDENTIFIER ON CAP ASSY)	TA,VA XA,YA BB,CB EB	2
-10G	BCREF7613		..SWITCH-LIGHTED PUSHBUTTON IND (V81590) (433-673-1001-1027) (S1, S2) (SPEC S231T290-1027) (OPT ITEMS 10D,10E,10F WITH GREEN DOT IDENTIFIER ON CAP ASSY)	TA,VA XA,YA BB,CB EB	2

30-11-52

 ILLUSTRATED PARTS LIST
 01.1 Page 1080F
 Jul 01/03

FIG. & ITEM	PART NO.	AIRLINE PART NUMBER	NOMENCLATURE 1234567	EFF CODE	QTY PER ASSY
03- -10H	BCREFA0512		..SWITCH-LIGHTED PUSHBUTTON IND (V81590) (433-673-1004-4027) (S1,S2) (SPEC S231T290-4027) (USE WITH CONFIG "D" MASTER MODULE. SEE REPAIR FOR ADDITIONAL INFORMATION)	TB,YB	2
-10J	BCREF7613		..SWITCH-LIGHTED PUSHBUTTON IND (V81590) (433-673-1001-1027) (S1,S2) (SPEC S231T290-1027) (USE WITH CONFIG "D" MASTER MODULE. SEE REPAIR FOR ADDITIONAL INFORMATION) (OPT ITEMS 10K,10L,10M, 10N)	GB,HB LB,MB PB,QB SB	2
-10K	BCREFA0512		..SWITCH-LIGHTED PUSHBUTTON IND (V81590) (433-673-1004-4027) (S1,S2) (SPEC S231T290-4047) (USE WITH CONFIG "D" MASTER MODULE. SEE REPAIR FOR ADDITIONAL INFORMATION) (OPT ITEMS 10J,10L,10M, 10N)	GB,HB LB,MB PB,QB SB	2

30-11-52

FIG. & ITEM	PART NO.	AIRLINE PART NUMBER	NOMENCLATURE 1234567	EFF CODE	QTY PER ASSY
03- -10L	851-30768-3027		..SWITCH-LIGHTED PUSHBUTTON IND (V96182) (S1,S2) (SPEC S231T290-3027) (OPT ITEMS 10J,10K,10M, 10N)	GB,HB LB,MB PB,QB SB	2
-10M	851-30768-2027		.SWITCH-LIGHTED PUSHBUTTON IND (V96182) (S1,S2) (SPEC S231T290-2027) (OPT ITEMS 10J,10K,10L, 10N)	GB,HB LB,MB PB,QB SB	2
-10N	S231T290-5027		..SWITCH-LIGHTED PUSHBUTTON IND (S1,S2) (OPT ITEMS 10J,10K,10L, 10M)	GB,HB LB,MB PB,QB SB	2
-11A	BCREF7613		..SWITCH-LIGHTED PUSHBUTTON IND (V81590) (433-673-1001-1027) (S1,S2) (SPEC S231T290-1027) (USE WITH CONFIG "D" MASTER MODULE. SEE REPAIR FOR ADDITIONAL INFORMATION) (OPT ITEMS 11B,11C,11D)	UB-XB FC-HC	2

30-11-52

 ILLUSTRATED PARTS LIST
 01.1 Page 1080H
 Jul 01/03

FIG. & ITEM	PART NO.	AIRLINE PART NUMBER	NOMENCLATURE 1234567	EFF CODE	QTY PER ASSY
03- -11B	BCREFA0512		..SWITCH-LIGHTED PUSHBUTTON IND (V81590) (433-673-1004-4027) (S1,S2) (SPEC S231T290-4027) (USE WITH CONFIG "D" MASTER MODULE. SEE REPAIR FOR ADDITIONAL INFORMATION) (OPT ITEMS 11A,11C,11D)	UB-XB FC-HC	2
-11C	851-30768-2027		..SWITCH-LIGHTED PUSHBUTTON IND (V96182) (S1,S2) (SPEC S231T290-2027) (OPT ITEMS 11A,11B,11D)	UB-XB FC-HC	2
-11D	S231T290-5027		..SWITCH-LIGHTED PUSHBUTTON IND (S1,S2) (OPT ITEMS 11A,11B,11C)	UB-XB FC-HC	2
15	800000121-1		..CONNECTOR (V05617) (J4)		1
20	BCREF6200		..LIGHT ASSY-VALVE IND (V81590) (434-674-1005-1115) (L1,L2) (SPEC S231T300-1115)	TA,VA XA,YA BB,GB HB,LB MB,PB UB,VB WB,FC GC	2

30-11-52

ILLUSTRATED PARTS LIST
01.1 Page 1080I
Jul 01/03

FIG. & ITEM	PART NO.	AIRLINE PART NUMBER	NOMENCLATURE 1234567	EFF CODE	QTY PER ASSY
03- -20A	BCREF8486		..LIGHT ASSY-VALVE IND (V81590) (434-674-1031-2115) (L1,L2) (OPT ITEM 20B) (SPEC S231T300-2115)	CB,EB FB,QB SB,TB XB,YB HC	2
-20B	BCREF6200		..LIGHT ASSY-VALVE IND (V81590) (434-674-1005-1115) (L1,L2) (OPT ITEM 20A) (SPEC S231T300-1115)	CB,EB FB,QB SB,TB XB,YB HC	2
25	233T3241-2		..BASEPLATE ASSY ATTACHING PARTS		1
30	NAS514P632-5		..SCREW -----*-----		3
35	SF6G6CBB5D		...NUT (V12324) (SPEC BACN10PA06-6)		2
40	DBMB1400-6A1		...STUD ASSY (V08524) (SPEC BACS21DD1B)		4
45	BACP10U0225N		...PANEL		1
50	BACS12CB06-5		DELETED		
50A	NAS1801-06-5		..SCREW		3
55	MS35338-41		..WASHER		3
60	69B46200-11		..STANDOFF		3
65	NAS1801-04-5		..SCREW		6
70	K19798-04		..NUT (V15653) (SPEC BACN10NW1) (OPT RMA4812-160-40 (V72962)) (OPT 293162 (V60119))		6

30-11-52

 ILLUSTRATED PARTS LIST
 01.1 Page 1080J
 Jul 01/03

FIG. & ITEM	PART NO.	AIRLINE PART NUMBER	NOMENCLATURE 1234567	EFF CODE	QTY PER ASSY
03-75	ZZWAC1714-15P		..CONNECTOR (V49367) (SPEC BACC45FN14-15P) (OPT C48-10R14-15P102 (V13556)) (OPT 48-10R14-15P300 (V02660)) (J2)		1
80	ZZWAC1712-12P8		..CONNECTOR (V49367) (SPEC BACC45FN12-12P8) (OPT C48-10R12-12P8-10 (V13556)) (OPT 48-10R12-12P8-300 (V02660)) (J1)		1
85	ZZWAC1714-15P7		..CONNECTOR (V49367) (SPEC BACC45FN14-15P7) (OPT C48-10R14-15P7-10 (V13556)) (OPT 48-10R14-15P7-300 (V02660)) (J3)	TA,VA YA,CB FB-HB MB,QB TB-YB	1
-85A	ZZWAC1716-24P8		..CONNECTOR (V49367) (SPEC BACC45FN16-24P8) (OPT C48-10R16-24P8-10 (V13556)) (OPT 48-10R16-24P8-300 (V02660)) (J3)	XA,BB EB,LB PB,SB FC-HC	1

30-11-52

FIG. & ITEM	PART NO.	AIRLINE PART NUMBER	NOMENCLATURE 1234567	EFF CODE	QTY PER ASSY
03-90	233T6200-71		..BRACKET-SPRT (LIMITED)	TA,VA YA,CB FB-HB MB,QB TB	1
90A	233T6200-97		..BRACKET-SPRT (LIMITED)	XA,BB EB,LB PB,SB	1
90B	233T6200-147		..BRACKET-SPRT (LIMITED)	TA,VA YA,CB FB,SB UB-YB	1
90C	233T6200-148		..BRACKET-SPRT (LIMITED)	XA,BB EB, FC-HC	1
-95	233T3241-3		..WIRE BUNDLE ASSY	GB,HB MB,QB TB	1
-95A	233T3241-9		..WIRE BUNDLE ASSY	LB, PB,SB	1
-95B	233T3241-3		..WIRE BUNDLE ASSY (MODIFIED BY CSB 233T3241-30-01)	UB-YB	1
-95C	233T3241-9		..WIRE BUNDLE ASSY (MODIFIED BY CSB 233T3241-30-01)	FC-HC	1
-95D	233T3241-3		..WIRE BUNDLE ASSY (P/N 233T3100-65,-135 -178,-248,-292 MADE WITH 233T3241-1,-1,-10, -13,-20, RESPECTIVELY)	TA,VA YA,CB FB	1
-95E	233T3241-9		..WIRE BUNDLE ASSY (P/N 233T3100-160,-180, -250 MADE WITH 233T3241-8,-12,-15, RESPECTIVELY)	XA, BB,EB	1

30-11-52

 ILLUSTRATED PARTS LIST
 01.1 Page 1080L
 Jul 01/03

 **BOEING**
COMPONENT
MAINTENANCE MANUAL

FIG. & ITEM	PART NO.	AIRLINE PART NUMBER	NOMENCLATURE 1234567	EFF CODE	QTY PER ASSY
03- -95F	233T3241-3		..WIRE BUNDLE ASSY (MODIFIED BY CSB 233T3241-30-01) (P/N 233T3100-65,-135 -178,-248,-292 MADE WITH 233T3241-41,-41, -42,-43,-44, RESPECTIVELY)	TA,VA YA,CB FB	1
-95G	233T3241-9		..WIRE BUNDLE ASSY (MODIFIED BY CSB 233T3241-30-01) (P/N 233T3100-160,-180, -250 MADE WITH 233T3241-48 THRU -50, RESPECTIVELY)	XA, BB,EB	1
-100	M39029-1-16-20		...CONTACT		44
-105	C48-2335-02		...CONTACT (V13556) (SPEC BACC47CN1) (OPT LRM20W16F74 (V09922)) (OPT ZL4020-36LT (V49367)) (OPT 48-2335-02 (V02660))	UB-YB FC-HC	10
-105A	C48-2335-02		...CONTACT (V13556) (SPEC BACC47CN1) (OPT LRM20W16F74 (V09922)) (OPT ZL4020-36LT (V49367)) (OPT 48-2335-02 (V02660)) (LIMITED)	TA,VA XA,YA BB,CB EB,FB	10

30-11-52

ILLUSTRATED PARTS LIST
01.1 Page 1080M
Jul 01/03

FIG. & ITEM	PART NO.	AIRLINE PART NUMBER	NOMENCLATURE 1234567	EFF CODE	QTY PER ASSY
03-					
-110	M39029-1-101		...CONTACT	UB-YB FC-HC	15
-110A	M39029-1-101		...CONTACT (LIMITED)	TA,VA XA,YA BB,CB EB,FB	15
-115	34138		...SPLICE (V00779)	UB-YB FC-HC	10
-115A	34138		...SPLICE (V00779) (LIMITED)	UB-YB FC-HC	10
120	HFW1204K01		...RELAY (V71482) (SPEC BACR13CD2) (OPT BR16S233 (V09026)) (OPT EE4AA005 (V35344)) (OPT 3SAV1338A2 (V01526)) (OPT HFW1206K03 (V58614))	UB-YB FC-HC	2
120A	HFW1204K01		...RELAY (V71482) (SPEC BACR13CD2) (OPT BR16S233 (V09026)) (OPT EE4AA005 (V35344)) (OPT 3SAV1338A2 (V01526)) (OPT HFW1206K03 (V58614)) (LIMITED)	TA,VA XA,YA BB,CB EB,FB	2

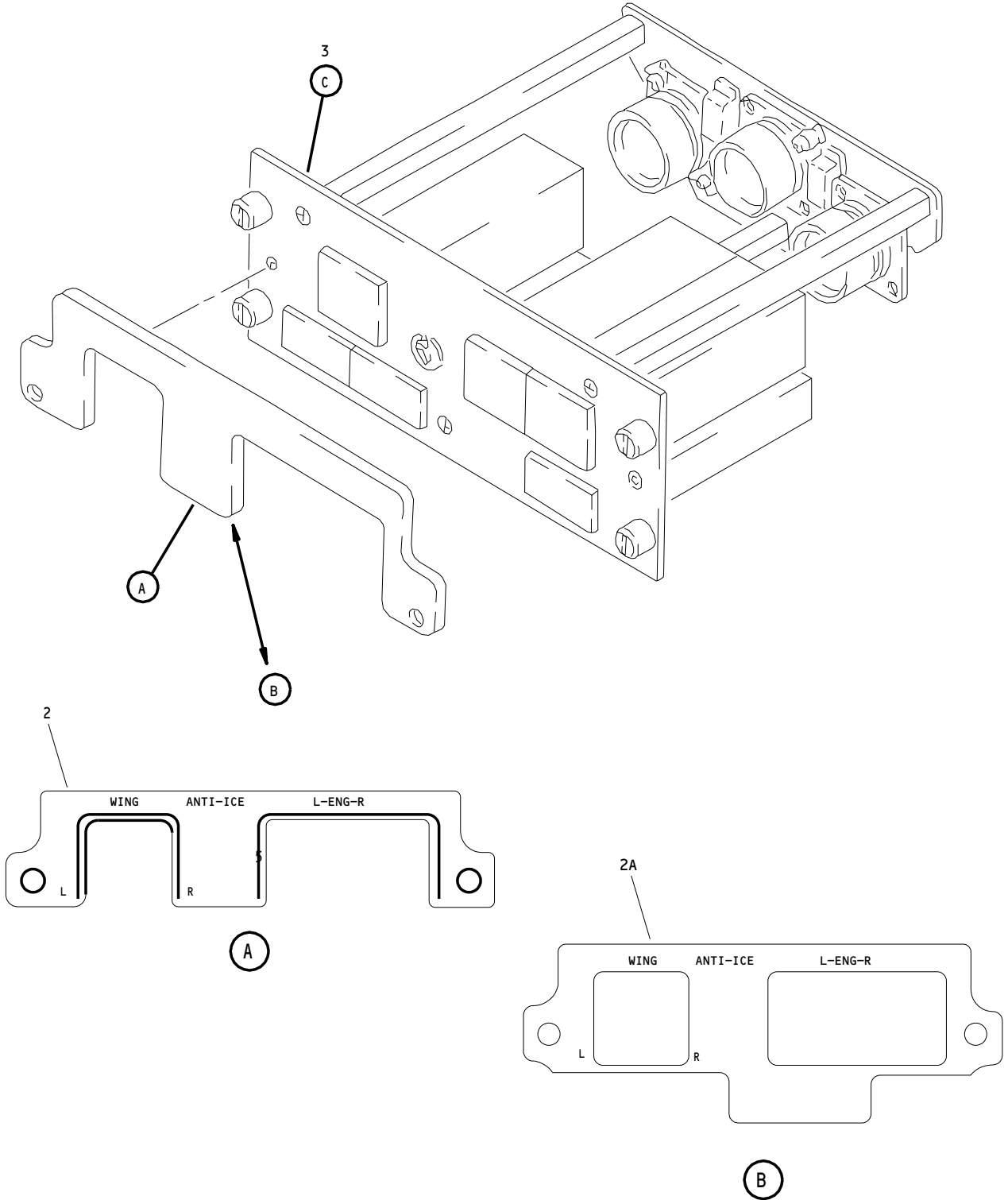
30-11-52

 ILLUSTRATED PARTS LIST
 01.1 Page 1080N
 Jul 01/03

FIG. & ITEM	PART NO.	AIRLINE PART NUMBER	NOMENCLATURE 1234567	EFF CODE	QTY PER ASSY
03-125	451120-026		...SOCKET (V03743) (SPEC BACS16AG1) (OPT 451120-026 (V58982)) (OPT RSE120026 (V58982))	UB-YB FC-HC	2
125A	451120-026		...SOCKET (V03743) (SPEC BACS16AG1) (OPT 451120-026 (V58982)) (OPT RSE120026 (V58982)) (LIMITED)	TA,VA XA,YA BB,CB EB,FB	2

30-11-52

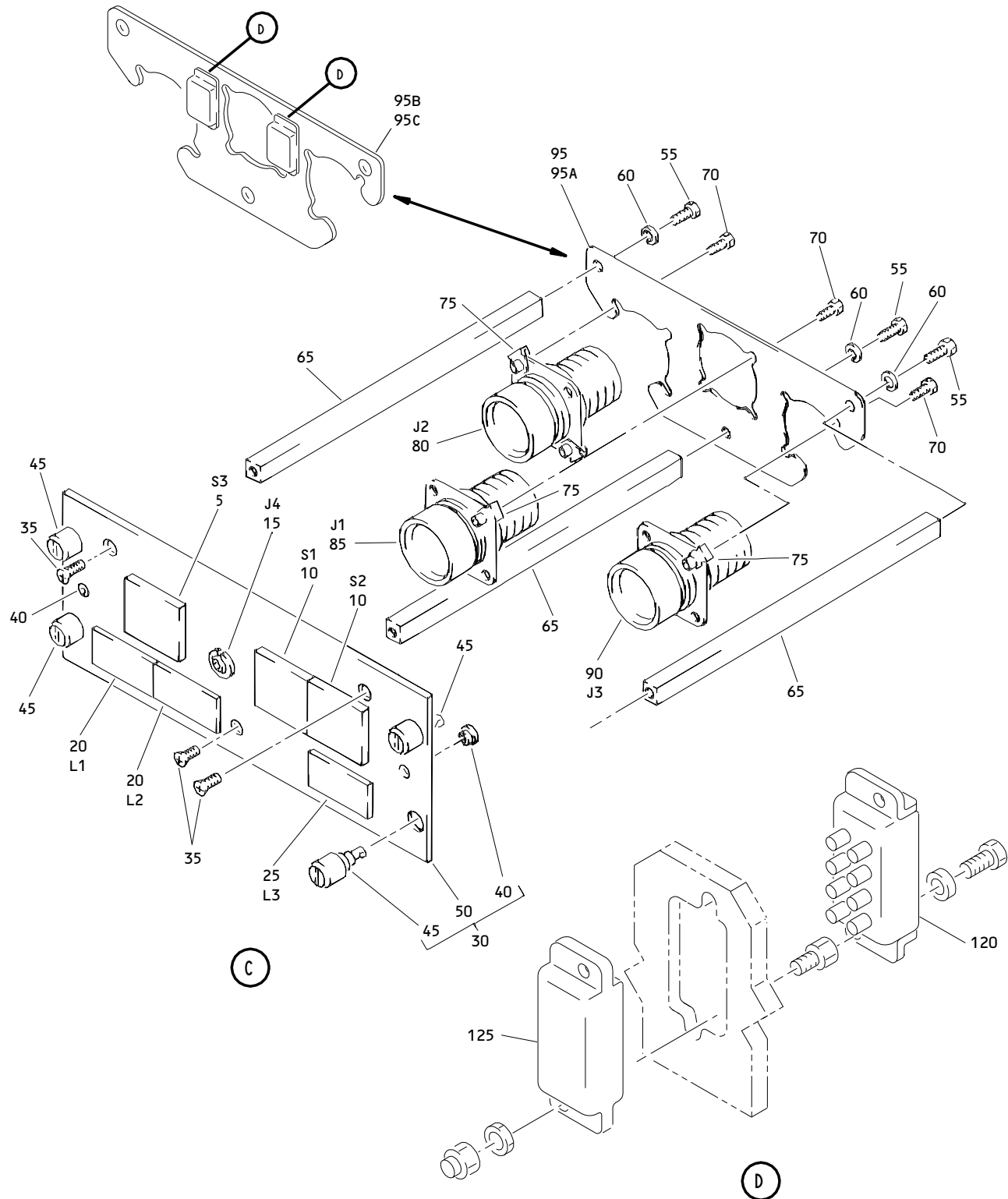
ILLUSTRATED PARTS LIST
01.1 Page 10800
Jul 01/03



Wing and Engine Anti-Ice Control Panel Assembly, M10397
Figure 4 (Sheet 1)

30-11-52

ILLUSTRATED PARTS LIST
01.1 Page 1080Q
Jul 01/03



Wing and Engine Anti-Ice Control Panel Assembly, M10397
Figure 4 (Sheet 2)

30-11-52

ILLUSTRATED PARTS LIST
01.1 Page 1080R
Jul 01/03

FIG. & ITEM	PART NO.	AIRLINE PART NUMBER	NOMENCLATURE 1234567	EFF CODE	QTY PER ASSY
04- -1A	233T3100-91		PANEL ASSY-M10397 WING AND ENG ANTI ICE CONT (PRE CSB 233T3241-30-03 R1)	UA	RF
-1B	233T3100-136		PANEL ASSY-M10397 WING AND ENG ANTI ICE CONT (PRE CSB 233T3241-30-03 R1)	WA	RF
-1C	233T3100-179		PANEL ASSY-M10397 WING AND ENG ANTI ICE CONT (PRE CSB 233T3241-30-03 R1)	ZA	RF
-1D	233T3100-249		PANEL ASSY-M10397 WING AND ENG ANTI ICE CONT (PRE CSB 233T3241-30-03 R1)	DB	RF
-1E	233T3241-1308		PANEL ASSY-M10397 WING AND ENG ANTI ICE CONT (POST CSB 233T3241-30-03 R1)	JB	RF
-1F	233T3241-1309		PANEL ASSY-M10397 WING AND ENG ANTI ICE CONT (POST CSB 233T3241-30-03 R1)	KB	RF
-1G	233T3241-1312		PANEL ASSY-M10397 WING AND ENG ANTI ICE CONT (POST CSB 233T3241-30-03 R1)	NB	RF
-1H	233T3241-1315		PANEL ASSY-M10397 WING AND ENG ANTI ICE CONT (POST CSB 233T3241-30-03 R1)	RB	RF
-1J	233T3241-1328		PANEL ASSY-M10397 WING AND ENG ANTI-ICE CONT (POST CSB 233T3241-30-03 R1)	ZB	RF
-1K	233T3241-1329		PANEL ASSY-M10397 WING AND ENG ANTI-ICE CONT (POST CSB 233T3241-30-03 R1)	CC	RF

30-11-52

ILLUSTRATED PARTS LIST
01.1 Page 1080S
Jul 01/03

FIG. & ITEM	PART NO.	AIRLINE PART NUMBER	NOMENCLATURE 1234567	EFF CODE	QTY PER ASSY
04- -1L	233T3241-1330		PANEL ASSY-M10397 WING AND ENG ANTI-ICE CONT (POST CSB 233T3241-30-03 R1)	DC	RF
-1M	233T3241-1331		PANEL ASSY-M10397 WING AND ENG ANTI-ICE CONT (POST CSB 233T3241-30-03 R1)	EC	RF
2	800-003403		.LIGHTPLATE (V05617) (SPEC S233T100-1061) (OPT S233T100-1061 (V51896))	UA, JB,ZB	1
2A	800-001242		.LIGHTPLATE (V05617) (SPEC S233T100-1071) (OPT S233T100-1071 (V51896))	WA,ZA DB,KB NB,RB CC-EC	1
3	233T3241-5		.PANEL ASSY (LIMITED)	UA,WA	1
-3A	233T3241-11		.PANEL ASSY (LIMITED)	ZA	1
-3B	233T3241-14		.PANEL ASSY (LIMITED)	DB	1
-3C	233T3241-45		.PANEL ASSY (LIMITED)	UA,WA	1
-3D	233T3241-46		.PANEL ASSY (LIMITED)	ZA	1
-3E	233T3241-47		.PANEL ASSY (LIMITED)	DB	1
-3F	233T3241-1005		.PANEL ASSY	JB,KB	1
-3G	233T3241-1011		.PANEL ASSY	NB	1

30-11-52

 ILLUSTRATED PARTS LIST
 01.1 Page 1080T
 Jul 01/03

FIG. & ITEM	PART NO.	AIRLINE PART NUMBER	NOMENCLATURE 1234567	EFF CODE	QTY PER ASSY
04-					
-3H	233T3241-1014		.PANEL ASSY	RB	1
-3J	233T3241-1045		.PANEL ASSY	ZB,CC	1
-3K	233T3241-1046		.PANEL ASSY	DC	1
-3L	233T3241-1047		.PANEL ASSY	EC	1
5	851-30768-2012		..SWITCH-LIGHTED PUSHBUTTON IND (ON) (V96182) (S3) (SPEC S231T290-2012) (LIMITED)	UA,WA	1
-5A	851-30768-3012		..SWITCH-LIGHTED PUSHBUTTON IND (ON) (V96182) (S3) (SPEC S231T290-3012) (LIMITED) (OPT ITEM 5B)	ZA,DB	1
-5B	BCREF7604		..SWITCH-LIGHTED PUSHBUTTON IND (ON) (V81590) (433-673-1001-1012) (S3) (SPEC S231T290-1012) (LIMITED) (OPT ITEM 5A)	ZA,DB	1
-5C	S231T290-5012		..SWITCH-LIGHTED PUSHBUTTON IND (S3) (LIMITED) (OPT ITEMS 5D,5E,5F WITH GREEN DOT IDENTIFIER ON CAP ASSY)	UA,WA ZA,DB	1

30-11-52

FIG. & ITEM	PART NO.	AIRLINE PART NUMBER	NOMENCLATURE 1234567	EFF CODE	QTY PER ASSY
04- -5D	BCREFA0503		..SWITCH-LIGHTED PUSHBUTTON IND (V81590) (433-673-1004-4012) (S3) (SPEC S231T290-4012) (LIMITED) (OPT ITEMS 5C,5E,5F WITH GREEN DOT IDENTIFIER ON CAP ASSY)	UA,WA ZA,DB	1
-5E	851-30768-2012		..SWITCH-LIGHTED PUSHBUTTON IND (V96182) (S3) (SPEC S231T290-2012) (OPT ITEMS 5C,5D,5F WITH GREEN DOT IDENTIFIER ON CAP ASSY)	UA,WA ZA,DB	1
-5F	BCREF7604		..SWITCH-LIGHTED PUSHBUTTON IND (V81590) (433-673-1001-1012) (S3) (SPEC S231T290-1012) (OPT ITEMS 5C,5D,5E WITH GREEN DOT IDENTIFIER ON CAP ASSY)	UA,WA ZA,DB	1
-5G	BCREF7604		..SWITCH-LIGHTED PUSHBUTTON IND (V81590) (433-673-1001-1012) (S3) (SPEC S231T290-1012) (USE WITH CONFIG "D" MASTER MODULE. SEE REPAIR FOR ADDITIONAL INFORMATION) (OPT ITEMS 5H,5J,5K,5L)	JB,KB NB,RB	1

30-11-52

 ILLUSTRATED PARTS LIST
 01.1 Page 1080V
 Jul 01/03

FIG. & ITEM	PART NO.	AIRLINE PART NUMBER	NOMENCLATURE 1234567	EFF CODE	QTY PER ASSY
04- -5H	BCREFA0503		..SWITCH-LIGHTED PUSHBUTTON IND (V81590) (433-673-1004-4012) (S3) (SPEC S231T290-4012) (USE WITH CONFIG "D" MASTER MODULE. SEE REPAIR FOR ADDITIONAL INFORMATION) (OPT ITEMS 5G,5J,5K,5L)	JB,KB NB,RB	1
-5J	BCREF7604		..SWITCH-LIGHTED PUSHBUTTON IND (V96182) (S3) (SPEC S231T290-3012) (OPT ITEMS 5G,5H,5K,5L)	JB,KB NB,RB	1
-5K	851-30768-2012		..SWITCH-LIGHTED PUSHBUTTON IND (V96182) (S3) (SPEC S231T290-2012) (OPT ITEMS 5G,5H,5J,5L)	JB,KB NB,RB	1
-5L	S231T290-5012		..SWITCH-LIGHTED PUSHBUTTON IND (S3) (OPT ITEMS 5G,5H,5J,5K)	JB,KB NB,RB	1
-5M	BCREF7604		..SWITCH-LIGHTED PUSHBUTTON IND (V81590) (433-673-1001-1012) (S3) (SPEC S231T290-1012) (USE WITH CONFIG "D" MASTER MODULE. SEE REPAIR FOR ADDITIONAL INFORMATION) (OPT ITEMS 5N,5P,5Q)	ZB,CC DC,EC	1

30-11-52

ILLUSTRATED PARTS LIST
01.1 Page 1080W
Jul 01/03

FIG. & ITEM	PART NO.	AIRLINE PART NUMBER	NOMENCLATURE 1234567	EFF CODE	QTY PER ASSY
04- -5N	BCREFA0503		..SWITCH-LIGHTED PUSHBUTTON IND (V81590) (433-673-1004-4012) (S3) (SPEC S231T290-4012) (USE WITH CONFIG "D" MASTER MODULE. SEE REPAIR FOR ADDITIONAL INFORMATION) (OPT ITEMS 5M,5P,5Q)	ZB,CC DC,EC	1
-5P	851-30768-2012		..SWITCH-LIGHTED PUSHBUTTON IND (V96182) (S3) (SPEC S231T290-2012) (OPT ITEMS 5M,5N,5Q)	ZB,CC DC,EC	1
-5Q	S231T290-5012		..SWITCH-LIGHTED PUSHBUTTON IND (S3) (OPT ITEMS 5M,5N,5P)	ZB,CC DC,EC	1
10	851-30768-2027		..SWITCH-LIGHTED PUSHBUTTON IND (ON/VALVE) (V96182) (S1, S2) (SPEC S231T290-2027) (LIMITED)	UA,WA	2
-10A	851-30768-3027		..SWITCH-LIGHTED PUSHBUTTON IND (ON/VALVE) (V96182) (S1, S2) (SPEC S231T290-3027) (LIMITED) (OPT ITEM 10B)	ZA,DB	2

30-11-52

 ILLUSTRATED PARTS LIST
 01.1 Page 1080X
 Jul 01/03

FIG. & ITEM	PART NO.	AIRLINE PART NUMBER	NOMENCLATURE 1234567	EFF CODE	QTY PER ASSY
04- -10B	BCREF7613		..SWITCH-LIGHTED PUSHBUTTON IND (ON/VALVE) (V81590) (433-673-1001-1027) (S1, S2) (SPEC S231T290-1027) (LIMITED) (OPT ITEM 10A)	ZA,DB	2
-10C	S231T290-5027		..SWITCH-LIGHTED PUSHBUTTON IND (S1, S2) (LIMITED) (OPT ITEMS 10D,10E,10F WITH GREEN DOT IDENTIFIER ON CAP ASSY)	UA,WA ZA,DB	2
-10D	BCREFA0512		..SWITCH-LIGHTED PUSHBUTTON (V81590) (433-673-1004-4027) (S1, S2) (SPEC S231T290-4027) (LIMITED) (OPT ITEMS 10C,10E,10F WITH GREEN DOT IDENTIFIER ON CAP ASSY)	UA,WA ZA,DB	2
-10E	851-30768-2027		..SWITCH-LIGHTED PUSHBUTTON IND (V96182) (S1, S2) (SPEC S231T290-2027) (LIMITED) (OPT ITEMS 10C,10D,10F WITH GREEN DOT IDENTIFIER ON CAP ASSY)	UA,WA ZA,DB	2

30-11-52

ILLUSTRATED PARTS LIST
01.1 Page 1080Y
Jul 01/03

FIG. & ITEM	PART NO.	AIRLINE PART NUMBER	NOMENCLATURE 1234567	EFF CODE	QTY PER ASSY
04- -10F	BCREF7613		..SWITCH-LIGHTED PUSHBUTTON IND (V81590) (433-673-1001-1027) (S1,S2) (SPEC S231T290-1027) (LIMITED) (OPT ITEMS 10C,10D,10E WITH GREEN DOT IDENTIFIER ON CAP ASSY)	UA,WA ZA,DB	2
-10G	BCREF7613		..SWITCH-LIGHTED PUSHBUTTON IND (V81590) (433-673-1001-1027) (S1,S2) (SPEC S231T290-1027) (USE WITH CONFIG "D" MASTER MODULE. SEE REPAIR FOR ADDITIONAL INFORMATION) (OPT ITEMS 10H,10J,10K, 10L)	JB,KB NB,RB	2
-10H	BCREFA5012		..SWITCH-LIGHTED PUSHBUTTON IND (V81590) (433-673-1004-4027) (S1,S2) (SPEC S231T290-4027) (USE WITH CONFIG "D" MASTER MODULE. SEE REPAIR FOR ADDITIONAL INFORMATION) (OPT ITEMS 10G,10J,10K, 10L)	JB,KB NB,RB	2
-10J	851-30768-3027		..SWITCH-LIGHTED PUSHBUTTON IND (V96182) (S1,S2) (SPEC S231T290-3027) (OPT ITEMS 10G,10H,10K, 10L)	JB,KB NB,RB	2

30-11-52

 ILLUSTRATED PARTS LIST
 01.1 Page 1080Z
 Jul 01/03

 **BOEING**
COMPONENT
MAINTENANCE MANUAL

FIG. & ITEM	PART NO.	AIRLINE PART NUMBER	NOMENCLATURE 1234567	EFF CODE	QTY PER ASSY
04- -10K	851-30768-2027		..SWITCH-LIGHTED PUSHBUTTON IND (V96182) (S1,S2) (SPEC S231T290-2027) (OPT ITEMS 10G,10H,10J, 10L)	JB,KB NB,RB	2
-10L	S231T290-5027		..SWITCH-LIGHTED PUSHBUTTON IND (S1,S2) (OPT ITEMS 10G,10H,10J, 10K)	JB,KB NB,RB	2
-10M	BCREF7613		..SWITCH-LIGHTED PUSHBUTTON IND (V81590) (433-673-1001-1027) (S1,S2) (SPEC S231T290-1027) (USE WITH CONFIG "D" MASTER MODULE. SEE REPAIR FOR ADDITIONAL INFORMATION) (OPT ITEM 10N,10P,10Q)	ZB,CC DC,EC	2
-10N	BCREFA0512		..SWITCH-LIGHTED PUSHBUTTON IND (V81590) (433-673-1004-4027) (S1,S2) (SPEC S231T290-4027) (USE WITH CONFIG "D" MASTER MODULE. SEE REPAIR FOR ADDITIONAL INFORMATION) (OPT ITEMS 10M,10P,10Q)	ZB,CC DC,EC	2
-10P	851-30768-2027		..SWITCH-LIGHTED PUSHBUTTON IND (V96182) (S1,S2) (SPEC S231T290-2027) (OPT ITEMS 10M,10N,10Q)	ZB,CC DC,EC	2
-10Q	S231T290-5027		..SWITCH-LIGHTED PUSHBUTTON IND (S1,S2) (OPT ITEMS 10M,10N,10P)	ZB,CC DC,EC	2

30-11-52

ILLUSTRATED PARTS LIST
01.1 Page 1081
Jul 01/03

FIG. & ITEM	PART NO.	AIRLINE PART NUMBER	NOMENCLATURE 1234567	EFF CODE	QTY PER ASSY
04-15	800000121-1		..CONNECTOR (V05617) (J4)		1
20	BCREF6200		..LIGHT ASSY-VALVE IND (V81590) (434-674-1005-1115) (L1,L2) (SPEC S231T300-1115)	UA,WA ZA, JB,KB NB,ZB CC,DC	2
-20A	BCREF8486		..LIGHT ASSY-VALVE IND (V81590) (434-674-1031-2115) (L1,L2) (SPEC S231T300-2115) (OPT ITEM 20B)	DB, RB,EC	2
-20B	BCREF6200		..LIGHT ASSY-VALVE IND (V81590) (434-674-1005-1115) (L1,L2) (SPEC S231T300-1115) (OPT ITEM 20A)	DB,RB EC	2
25	BCREF6525		..LIGHT ASSY-ICING IND (V81590) (434-674-1005-1280) (L3) (SPEC 231T300-1280)	UA,WA ZA, JB,KB NB,ZB CC,DC	1
-25A	BCREF8512		..LIGHT ASSY-ICING IND (V81590) (434-674-1031-2280) (L3) (SPEC 231T300-2280) (OPT ITEM 25B)	DB, RB,EC	1
-25B	BCREF6525		..LIGHT ASSY-ICING IND (V81590) (434-674-1005-1280) (L3) (SPEC 231T300-1280) (OPT ITEM 25A)	DB, RB,EC	1

30-11-52

 ILLUSTRATED PARTS LIST
 01.1 Page 1082
 Jul 01/03

 **BOEING**
COMPONENT
MAINTENANCE MANUAL

FIG. & ITEM	PART NO.	AIRLINE PART NUMBER	NOMENCLATURE 1234567	EFF CODE	QTY PER ASSY
04-30	233T3241-6		..BASEPLATE ASSY ATTACHING PARTS		1
35	NAS514P632-5		..SCREW -----*-----		3
40	SF6G6CBB5D		...NUT (V12324) (SPEC BACN10PA06-6)		2
45	DBMB1400-6A1		...STUD ASSY (V08524) (SPEC BACS21DD1B)		4
50	BACP10U0225N		...PANEL		1
55	NAS1801-06-5		..SCREW		3
60	MS35338-41		..WASHER		3
65	69B46200-11		..STANDOFF		3
70	NAS1801-04-5		..SCREW		6
75	K19798-04		..NUT (V15653) (SPEC BACN10NW1) (OPT RMA4812-160-40 (V72962)) (OPT 293162 (V60119))		6
80	ZZWAC1714-15P		..CONNECTOR (V49367) (SPEC BACC45FN14-15P) (OPT C48-10R14-15P102 (V13556)) (OPT 48-10R14-15P300 (V02660)) (J2)		1

30-11-52

ILLUSTRATED PARTS LIST
01.1 Page 1082A
Jul 01/03

FIG. & ITEM	PART NO.	AIRLINE PART NUMBER	NOMENCLATURE 1234567	EFF CODE	QTY PER ASSY
04-85	ZZWAC1712-12P8		..CONNECTOR (V49367) (SPEC BACC45FN12-12P8) (OPT C48-10R12-12P8-10 (V13556)) (OPT 48-10R12-12P8-300 (V02660)) (J1)		1
90	ZZWAC1714-15P7		..CONNECTOR (V49367) (SPEC BACC45FN14-15P7) (OPT C48-10R14-15P7-10 (V13556)) (OPT 48-10R14-15P7-300 (V02660)) (J3)		1
95	233T6200-71		..BRACKET-SPRT	JB,KB NB,RB	1
95A	233T6200-71		..BRACKET-SPRT (LIMITED)	UA,WA ZA,DB	1
-95B	233T6200-147		..BRACKET-SPRT (LIMITED)	UA,WA ZA,DB	1
-95C	233T6200-147		..BRACKET-SPRT	ZB,CC DC,EC	1
-100	233T3241-7		..WIRE BUNDLE ASSY	JB,KB NB,RB	1
-100A	233T3241-7		..WIRE BUNDLE ASSY (MODIFIED BY CSB 233T3241-30-01)	ZB,CC DC,EC	1
-100B	233T3241-7		..WIRE BUNDLE ASSY (233T3100-91,-136, -179,-249, MADE WITH 233T3241-5,-5,-11,-14, RESPECTIVELY)	UA,WA ZA,DB	1
-100C	233T3241-7		..WIRE BUNDLE ASSY (MODIFIED BY CSB 233T3241-30-01) (233T3100-91,-136, -179,-249 MADE WITH 233T3241-45,-45,-46, -47, RESPECTIVELY)	UA,WA ZA,DB	1

30-11-52

 ILLUSTRATED PARTS LIST
 01.1 Page 1082B
 Jul 01/03

 **BOEING**
COMPONENT
MAINTENANCE MANUAL

FIG. & ITEM	PART NO.	AIRLINE PART NUMBER	NOMENCLATURE 1234567	EFF CODE	QTY PER ASSY
04- -105	M39029-1-16-20		...CONTACT	JB,KB NB,RB	47
-105A	M39029-1-16-20		...CONTACT (LIMITED)	UA,WA ZA,DB	47
-110	C48-2335-02		...CONTACT (V13556) (SPEC BACC47CN1) (OPT LRM20W16F74 (V09922)) (OPT ZL4020-36LT (V49367)) (OPT 48-2335-02 (V02660))	ZB,CC DC,EC	10
-110A	C48-2335-02		...CONTACT (V13556) (SPEC BACC47CN1) (OPT LRM20W16F74 (V09922)) (OPT ZL4020-36LT (V49367)) (OPT 48-2335-02 (V02660))	UA,WA ZA,DB	10
-115	M39029-1-101		...CONTACT (LIMITED)	ZB,CC DC,EC	15
-115A	M39029-1-101		...CONTACT (LIMITED)	UA,WA ZA,DB	15
120	HFW1204K01		...RELAY (V71482) (SPEC BACR13CD2) (OPT BR16S233 (V09026)) (OPT EE4AA005 (V35344)) (OPT 3SAV1338A2 (V01526)) (OPT HFW1206K03 (V58614))	ZB,CC DC,EC	2

30-11-52

ILLUSTRATED PARTS LIST
01.1 Page 1082C
Jul 01/03

FIG. & ITEM	PART NO.	AIRLINE PART NUMBER	NOMENCLATURE 1234567	EFF CODE	QTY PER ASSY
04- -120A	HFW1204K01		...RELAY (V71482) (SPEC BACR13CD2) (OPT BR16S233 (V09026)) (OPT EE4AA005 (V35344)) (OPT 3SAV1338A2 (V01526)) (OPT HFW1206K03 (V58614)) (LIMITED)	UA,WA ZA,DB	2
125	451120-026		...SOCKET (V03743) (SPEC BACS16AG1) (OPT 451120-026 (V58982)) (OPT RSE120026 (V58982))	ZB,CC DC,EC	2
-125A	451120-026		...SOCKET (V03743) (SPEC BACS16AG1) (OPT 451120-026 (V58982)) (OPT RSE120026 (V58982)) (LIMITED)	UA,WA ZA,DB	2
-130	34138		...SPLICE	ZB,CC DC,EC	10
-130A	34138		...SPLICE (LIMITED)	UA,WA EA,DB	10

30-11-52

 ILLUSTRATED PARTS LIST
 01.1 Page 1082D
 Jul 01/03